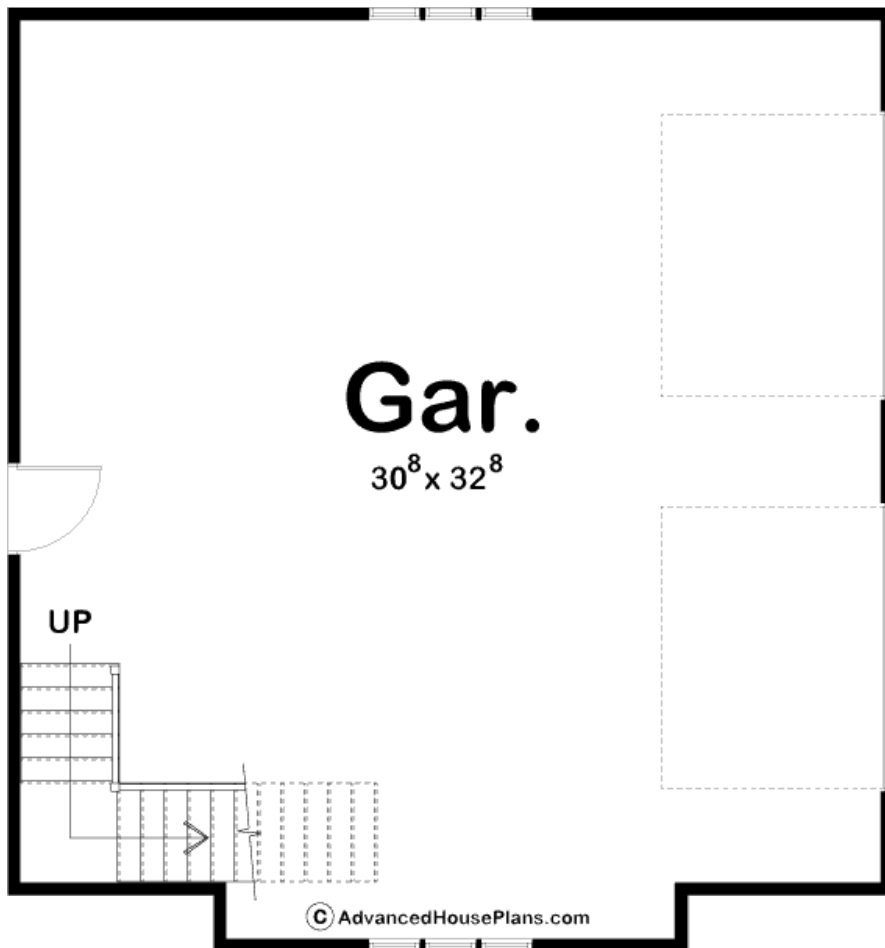


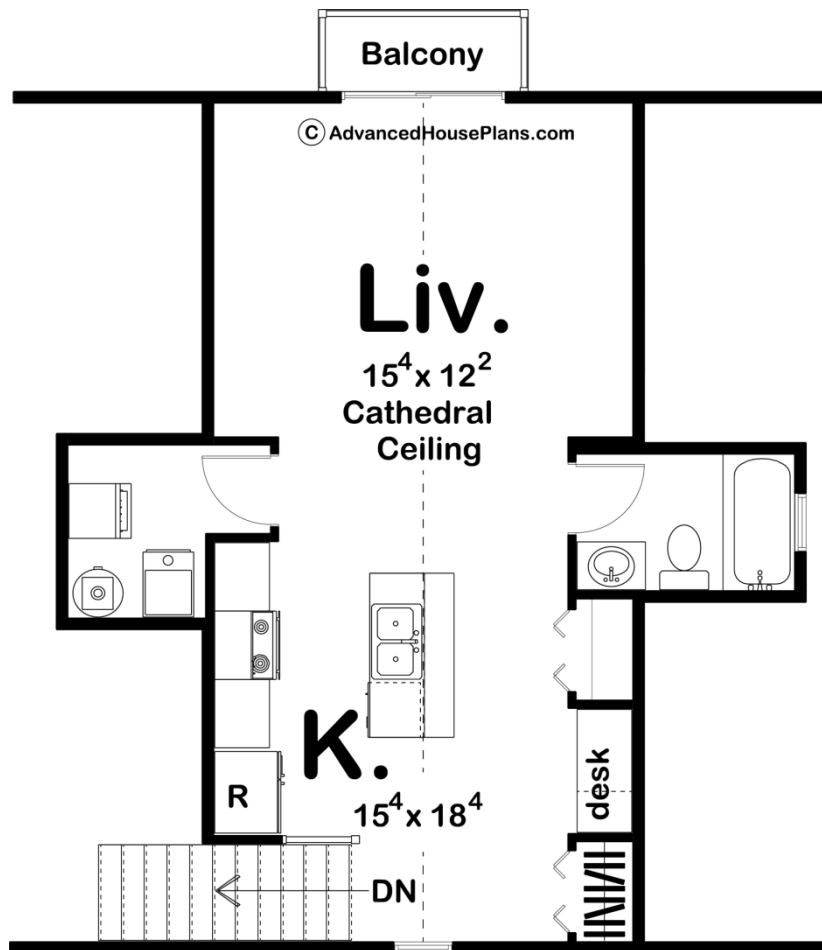
**ADVANCED**  
HOUSE PLANS



### 29019 - Hayes Data Sheet

556 SQ FT	1 BEDS	1 BATHS	2 BAYS	31' 4" WIDE	33' 4" DEEP
--------------	-----------	------------	-----------	----------------	----------------





## Construction Specs

### Layout

Bedrooms	1
Bathrooms	1
Garage Bays	2

### Square Footage

Second Level	556 Sq. Ft.
Garage	1014 Sq. Ft.
Total Finished Area	556 Sq. Ft.

### Exterior Dimensions

Width	31' 4"
Depth	33' 4"

### Default Construction Stats

*Stats are unique to the individual plan.*

Foundation Type	Slab
Exterior Wall Construction	2x4

Roof Pitches	9/12 Primary
Main Wall Height	9'
Second Wall Height	7'

## Plan Description

The Hayes is a beautiful Craftsman-style carriage house plan. The exterior features wood garage doors and stone accents. Inside, the 2 car garage lies under a studio apartment. The studio apartment includes a great room that doubles as the primary bedroom. The Hayes also features a full kitchen complete with a large island. A built-in desk provides a great place to work or play. A balcony looks out from the great room.