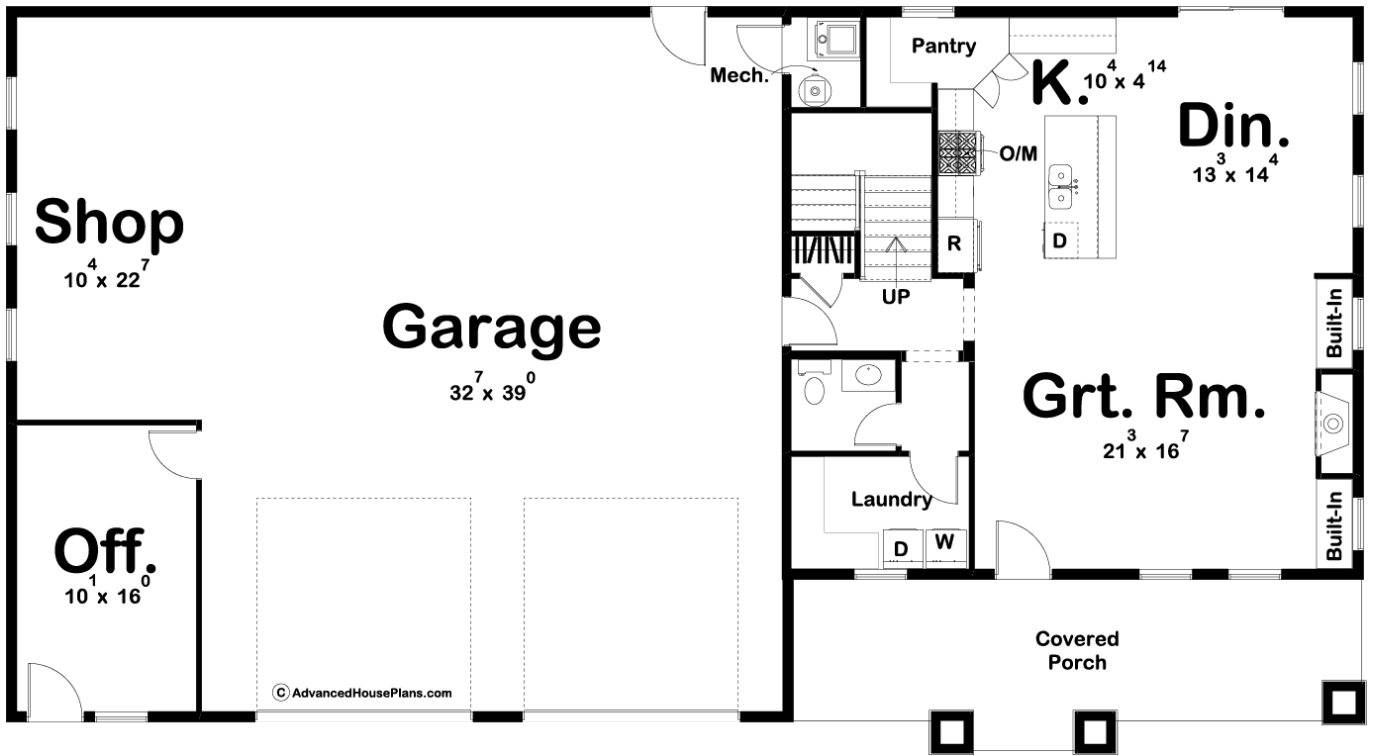
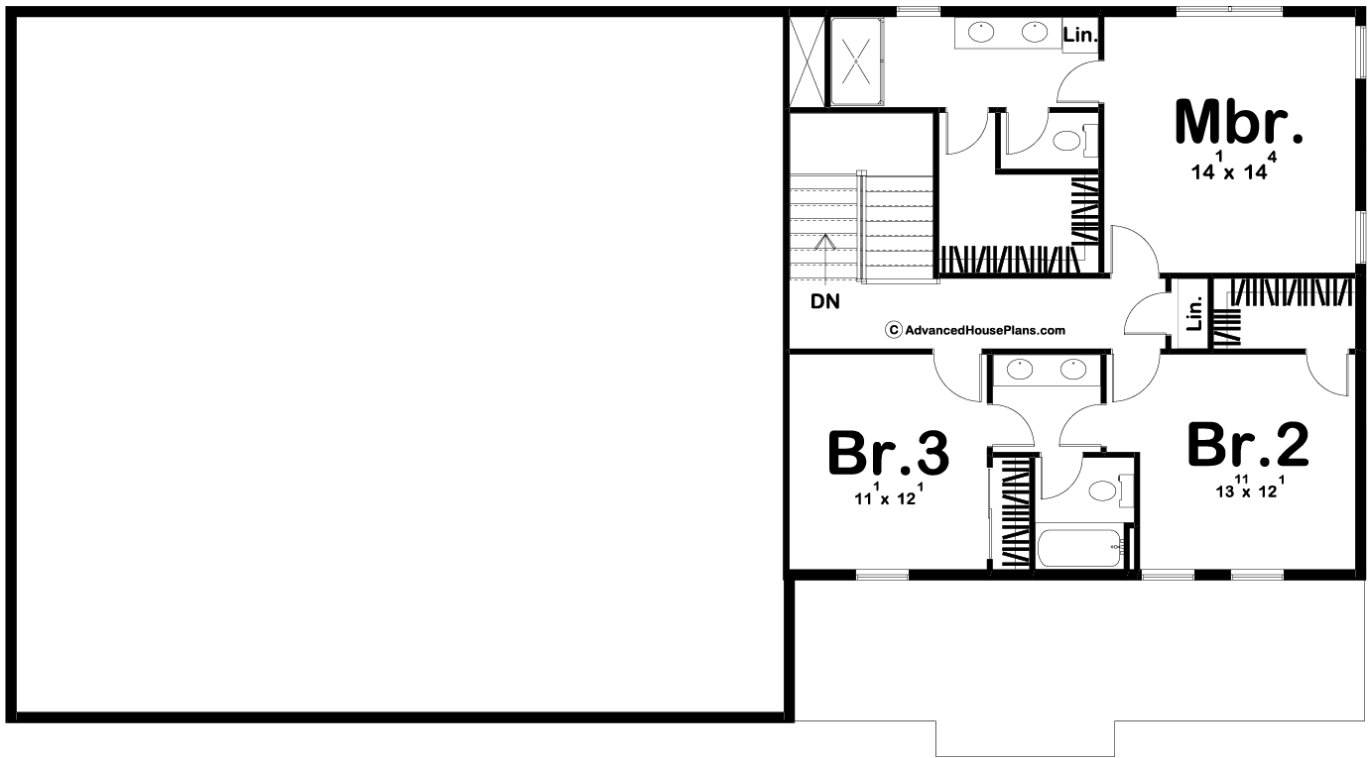




**29769 - Helena Data Sheet**

1994 SQ FT	3 BEDS	3 BATHS	2 BAYS	76' 0" WIDE	41' 0" DEEP
---------------	-----------	------------	-----------	----------------	----------------





## Construction Specs

### Layout

Bedrooms	3
Bathrooms	3
Garage Bays	2

### Square Footage

Main Level	1037 Sq. Ft.
Second Level	957 Sq. Ft.
Garage	1597 Sq. Ft.
Total Finished Area	1994 Sq. Ft.

### Exterior Dimensions

Width	76' 0"
Depth	41' 0"
Ridge Height	28' 0"
<i>Calculated from main floor line</i>	

### Default Construction Stats

*Stats are unique to the individual plan.*

Foundation Type	Slab
Exterior Wall Construction	Post Frame
Roof Pitches	6/12 Primary
Main Wall Height	9'
Second Wall Height	8'

## Plan Description

If you are looking for an efficient way to build a house, look no further than a post frame home. The Helena plan provides a great place to live as well as work. On the work side, the house includes an oversized 2 car garage with a shop and office. Inside the home, the great room is warmed by a fireplace that is flanked by built-in bookshelves. The kitchen includes a large island and a walk-in pantry. Upstairs you'll find the master suite which includes his/her vanities, an enclosed toilet, and a walk-in closet.