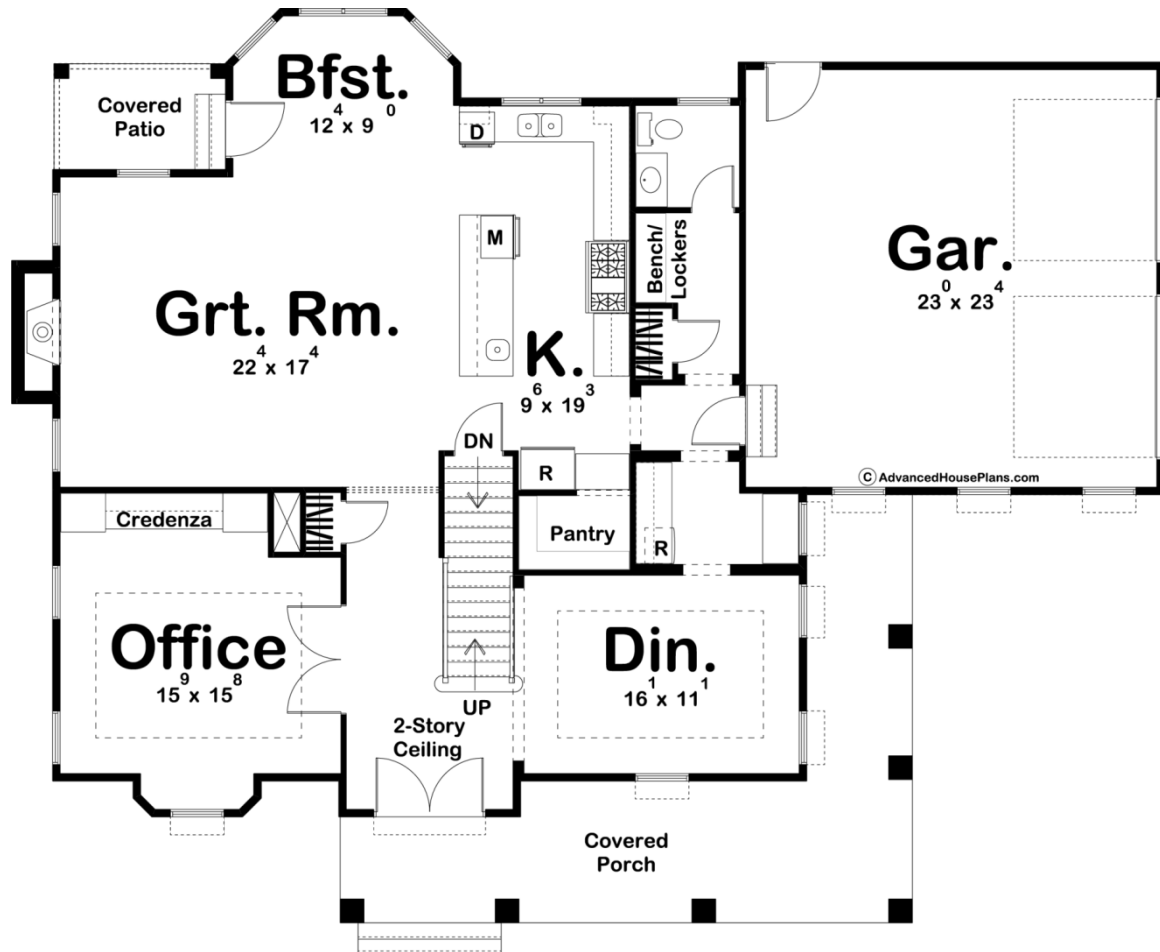
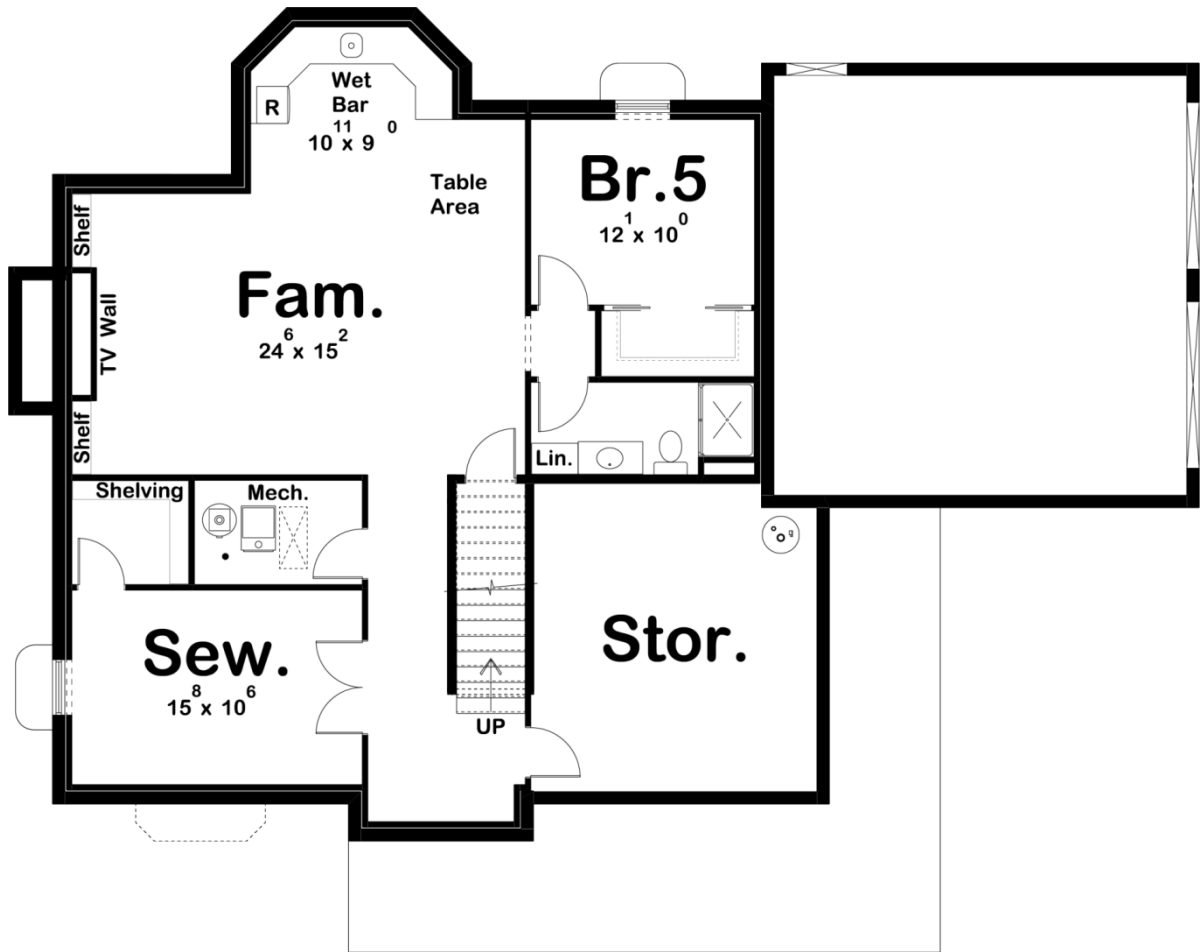
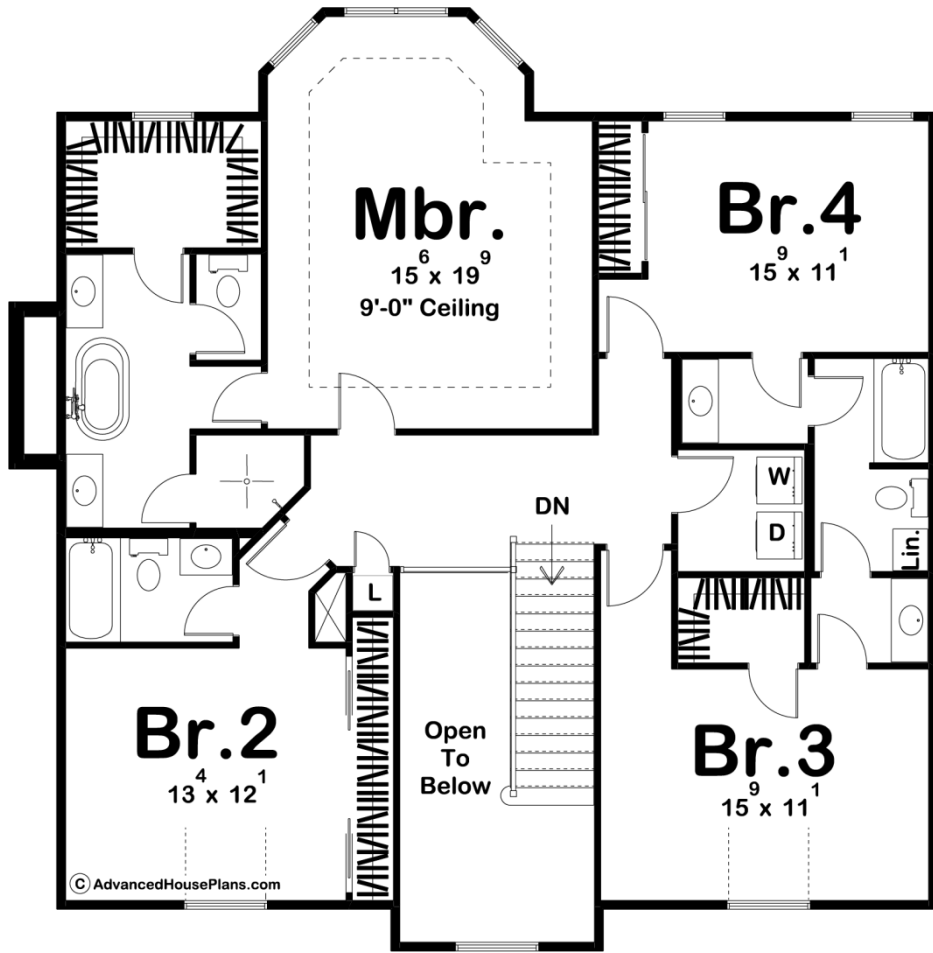




**29857 - Henrietta Data Sheet**

3073 SQ FT	4 BEDS	4 BATHS	2 BAYS	62' 0" WIDE	51' 0" DEEP
---------------	-----------	------------	-----------	----------------	----------------





Construction Specs

## Layout

Bedrooms	4
Bathrooms	4
Garage Bays	2

## Square Footage

Main Level	1570 Sq. Ft.
Second Level	1503 Sq. Ft.
Garage	560 Sq. Ft.
Total Finished Area	3073 Sq. Ft.

## Exterior Dimensions

Width	62' 0"
Depth	51' 0"

## Default Construction Stats

*Stats are unique to the individual plan.*

Foundation Type	Basement
Exterior Wall Construction	2x4
Roof Pitches	16/12 Primary, 6/12 2/12 Secondary
Foundation Wall Height	9'
Main Wall Height	9'
Second Wall Height	8'

## Plan Description

The Henrietta house will blow you away with its victorian elegance. The exterior is where the victorian style starts with its large front covered porch with ornate details and a roof with finials. As you enter the home you will be greeted by a stunning 2 story entry. To the right of the entry, you will find a formal dining room with a tray ceiling. On the other side of the entry, you will find a wonderful office with a built-in credenza. Farther into the home, the great room is warmed by a fireplace. The large kitchen includes a walk-in pantry and a large island. A breakfast nook accesses a covered patio off the rear of the home. Upstairs you will find the bedrooms. The massive master suite includes his/her vanities, a soaking tub, a walk-in shower, an enclosed toilet, and a walk-in closet. Bedroom 2 has access to its own bathroom while bedrooms 3 and 4 share a jack and jill bathroom. Back on the main floor, the home's 2 car side load garage accesses the home through a convenient mudroom with a bench and lockers.