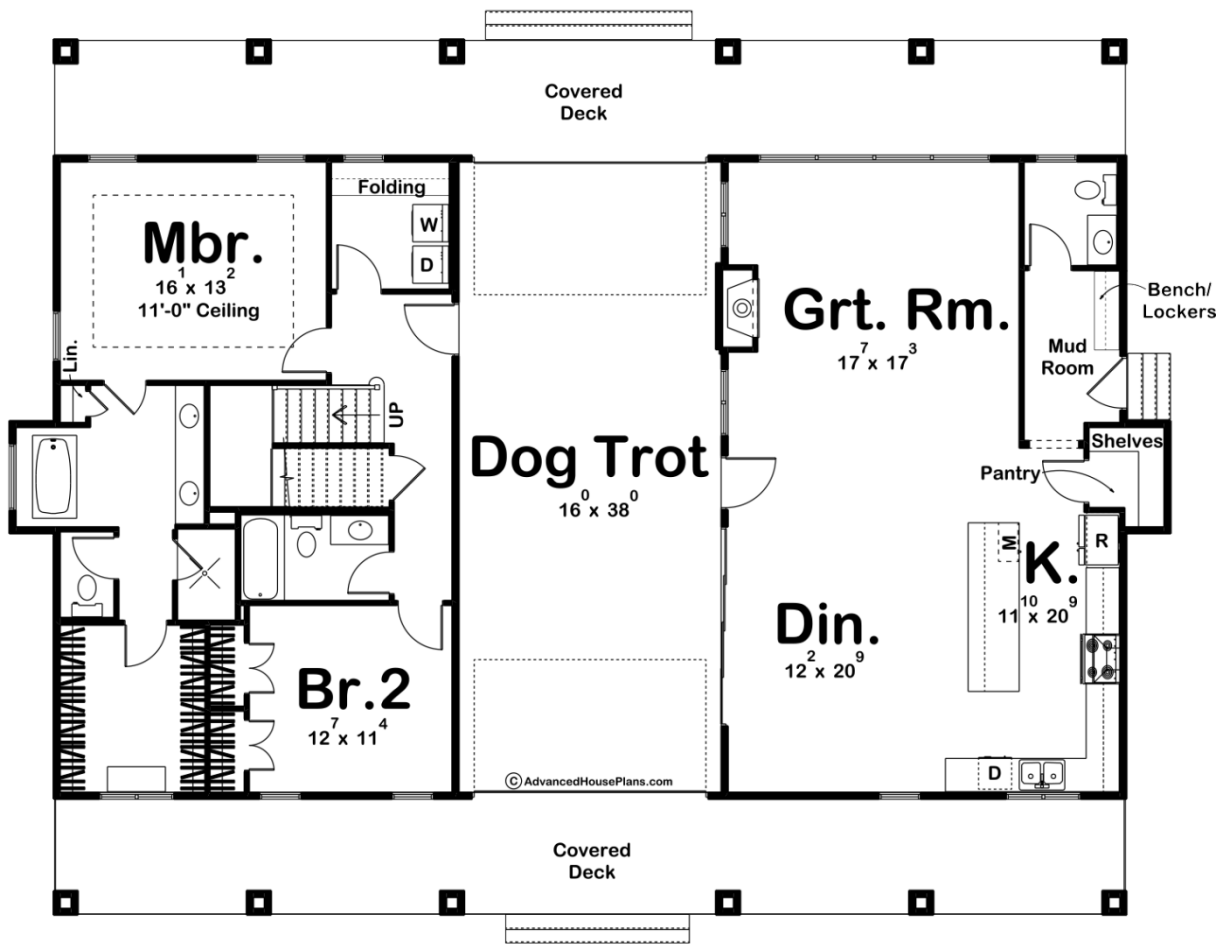
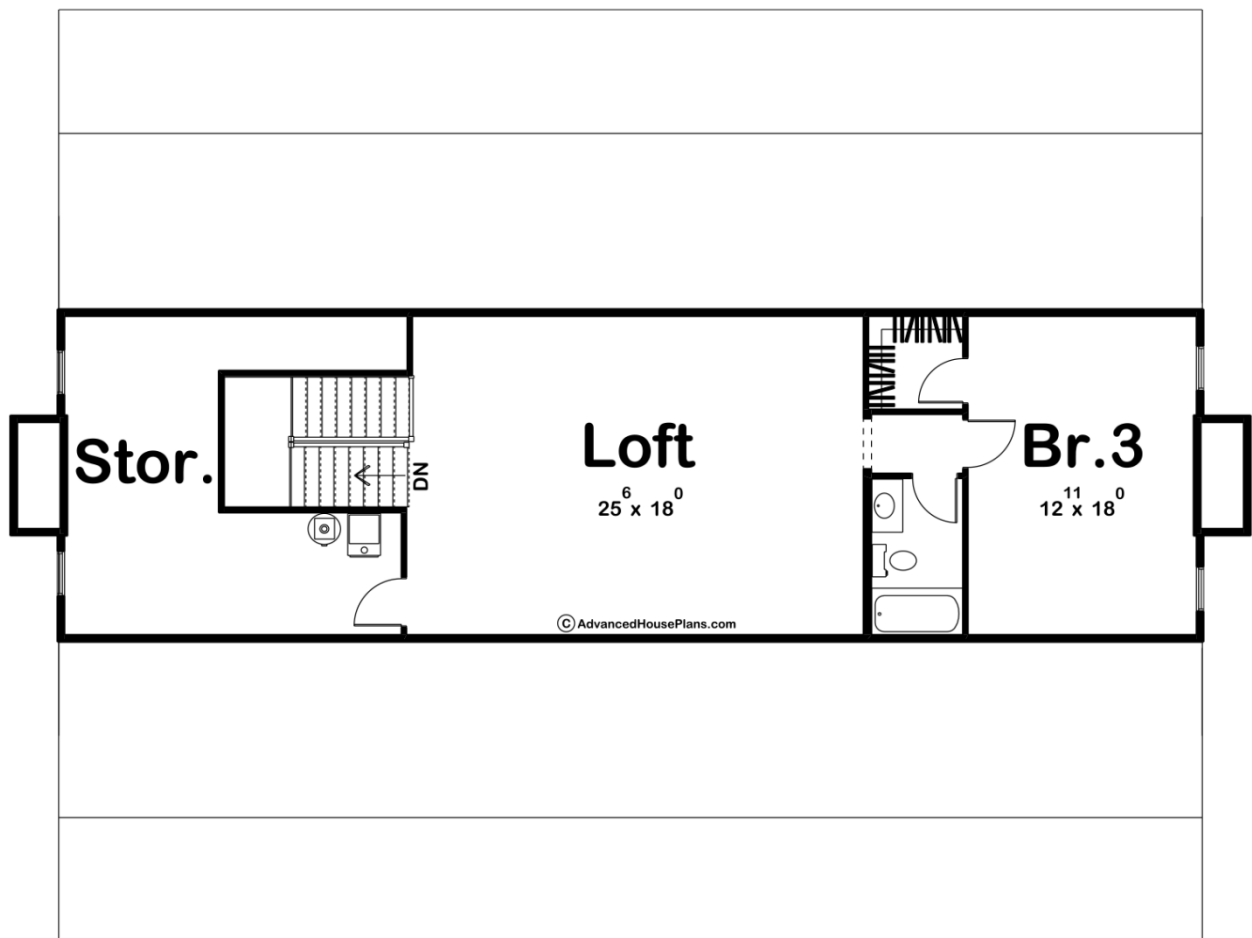




30180 - Hickory Grove Data Sheet

|               |           |            |           |                |                |
|---------------|-----------|------------|-----------|----------------|----------------|
| 2758<br>SQ FT | 3<br>BEDS | 4<br>BATHS | 0<br>BAYS | 70' 0"<br>WIDE | 52' 8"<br>DEEP |
|---------------|-----------|------------|-----------|----------------|----------------|





## Construction Specs

### Layout

|           |   |
|-----------|---|
| Bedrooms  | 3 |
| Bathrooms | 4 |

### Square Footage

|                     |              |
|---------------------|--------------|
| Main Level          | 1919 Sq. Ft. |
| Second Level        | 839 Sq. Ft.  |
| Covered Area        | 874 Sq. Ft.  |
| Total Finished Area | 2758 Sq. Ft. |

### Exterior Dimensions

|                                                        |        |
|--------------------------------------------------------|--------|
| Width                                                  | 70' 0" |
| Depth                                                  | 52' 8" |
| Ridge Height<br><i>Calculated from main floor line</i> | 28' 0" |

### Default Construction Stats

*Stats are unique to the individual plan.*

|                            |                               |
|----------------------------|-------------------------------|
| Foundation Type            | Crawlspace                    |
| Exterior Wall Construction | 2x4                           |
| Roof Pitches               | 10/12 Primary, 4/12 Secondary |
| Main Wall Height           | 10'                           |
| Second Wall Height         | 8'                            |

## Plan Description

The Hickory Grove plan is a beautiful 1.5 story traditional style Dogtrot home. The exterior pays tribute to the original dogtrot homes with its large front and rear covered decks and dual faux fireplace bump outs. Inside this lovely home, the main living areas and bedrooms are separated by an amazing Dogtrot area that opens up to the outside through 2 garage doors. The right side of the home includes the great room, dining room, and kitchen. The kitchen includes a large island with a snack bar and a walk-in pantry. The great room is warmed by a fireplace and allows in ample light through its large windows. The master suite can be found on the left side of the home. The master bedroom lies under an 11' trayed ceiling. The master bathroom includes a soaking tub, his/her vanities, a walk-in shower, and a massive walk-in closet. An additional bedroom and bathroom can also be found on the left side of the home. Upstairs, you'll find a huge loft area, a storage area, and an additional bedroom. Bedroom 3 has its own bathroom and walk-in closet. Dog Trot Additional Square Feet = 617 sq ft.