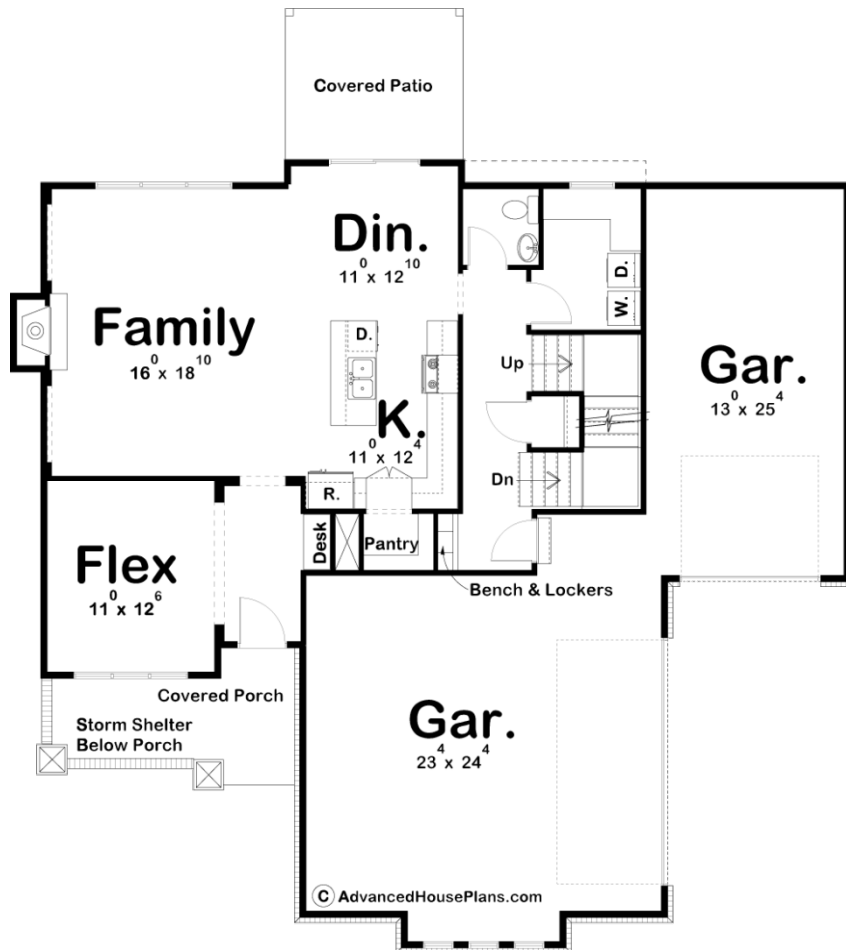
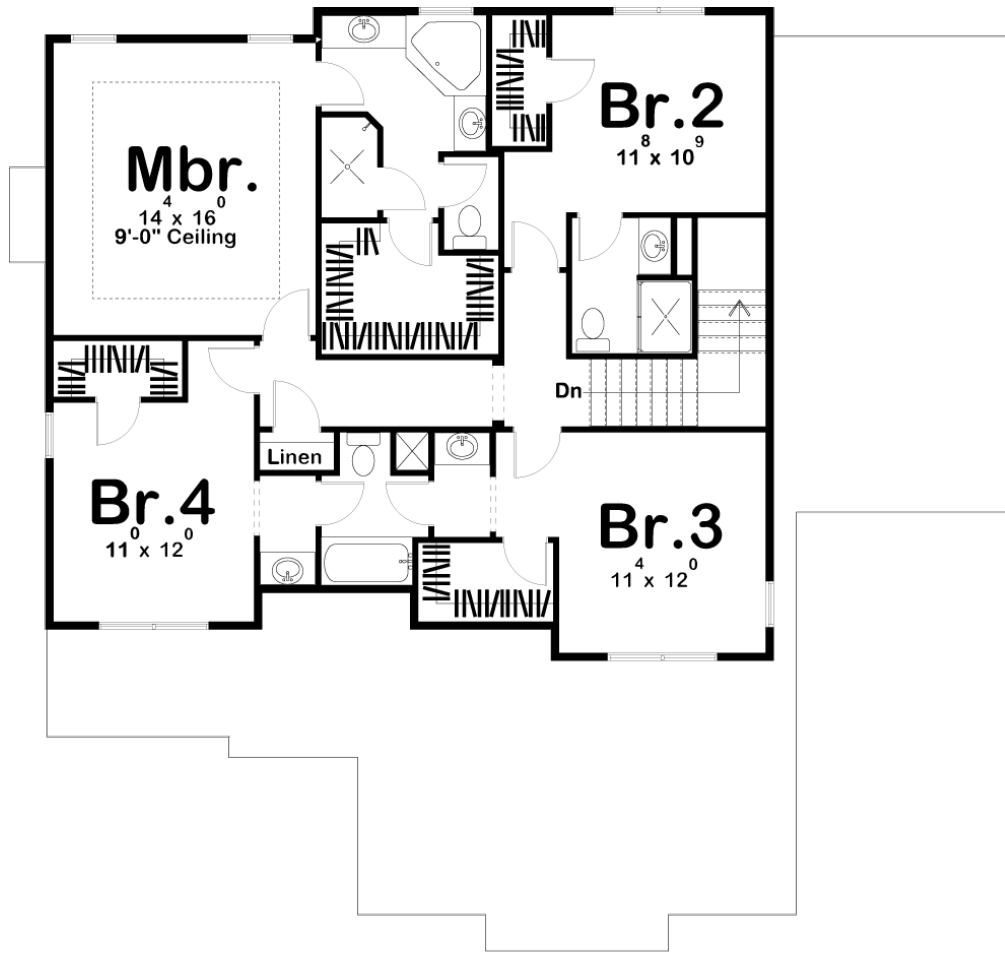




29346 - Hollandale Data Sheet

2363 SQ FT	4 BEDS	4 BATHS	3 BAYS	53' 0" WIDE	62' 0" DEEP
---------------	-----------	------------	-----------	----------------	----------------





Construction Specs

Layout

Bedrooms	4
Bathrooms	4
Garage Bays	3

Square Footage

Main Level	1105 Sq. Ft.
Second Level	1258 Sq. Ft.
Garage	931 Sq. Ft.
Total Finished Area	2363 Sq. Ft.

Exterior Dimensions

Width	53' 0"
Depth	62' 0"
Ridge Height	26' 0"
<i>Calculated from main floor line</i>	

Default Construction Stats

Stats are unique to the individual plan.

Foundation Type	Basement
Exterior Wall Construction	2x4
Roof Pitches	6/12
Foundation Wall Height	9'
Main Wall Height	9'
Second Wall Height	8'

Plan Description

Hollandale is a 2 story Modern Prairie-style masterpiece! Along with a gorgeous facade, this house plan has many great Family-Centered features that make this an excellent plan for builders and homeowners alike. This house plan is designed with deep overhangs and a contemporary nod to the famous prairie-style home. The elevation combines the use of brick and stucco, with a fantastic covered porch shielded by a brick half-wall for privacy. The main floor features a well-designed kitchen with walk-in pantry, flex room, and covered patio out back. The stairs are tucked away from the public areas of the house, giving it a private feel and more conveniently accessed from the garage entrance which has bench and lockers integrated into the wall for a simple, efficient drop zone. The second floor features a generously-sized master suite, with tray ceiling, corner tub, and large walk-in closet. Each of the secondary bedrooms has a walk-in closet and private bath access.