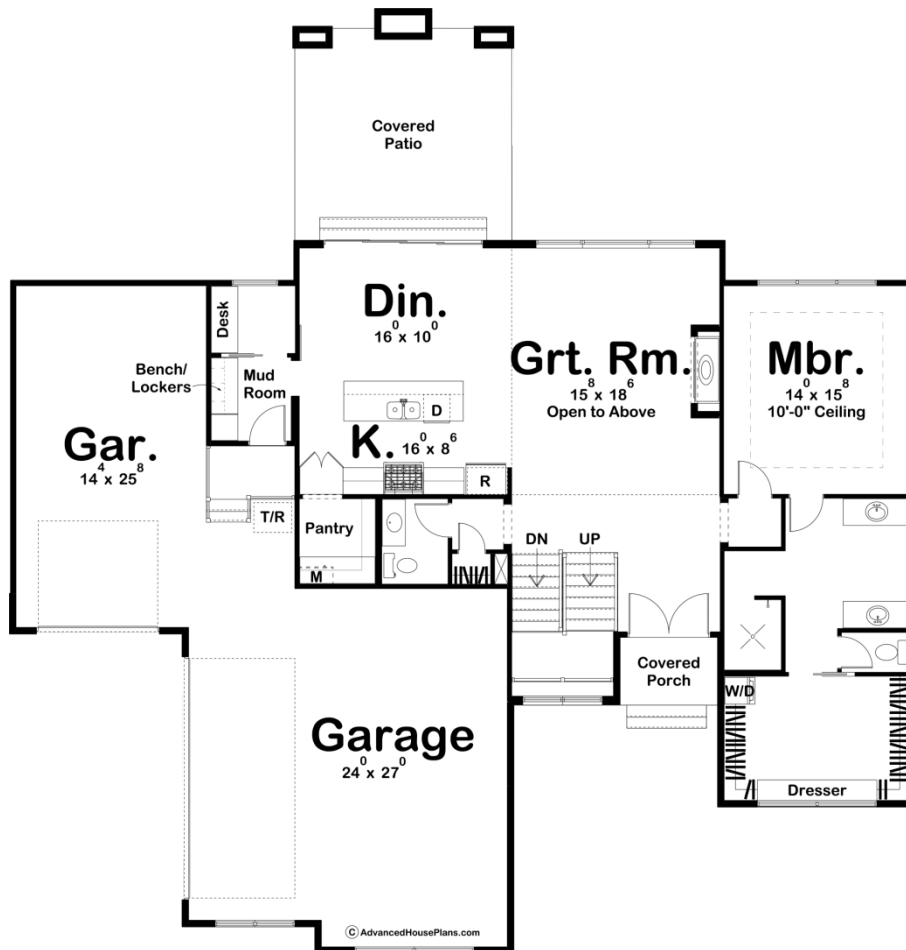
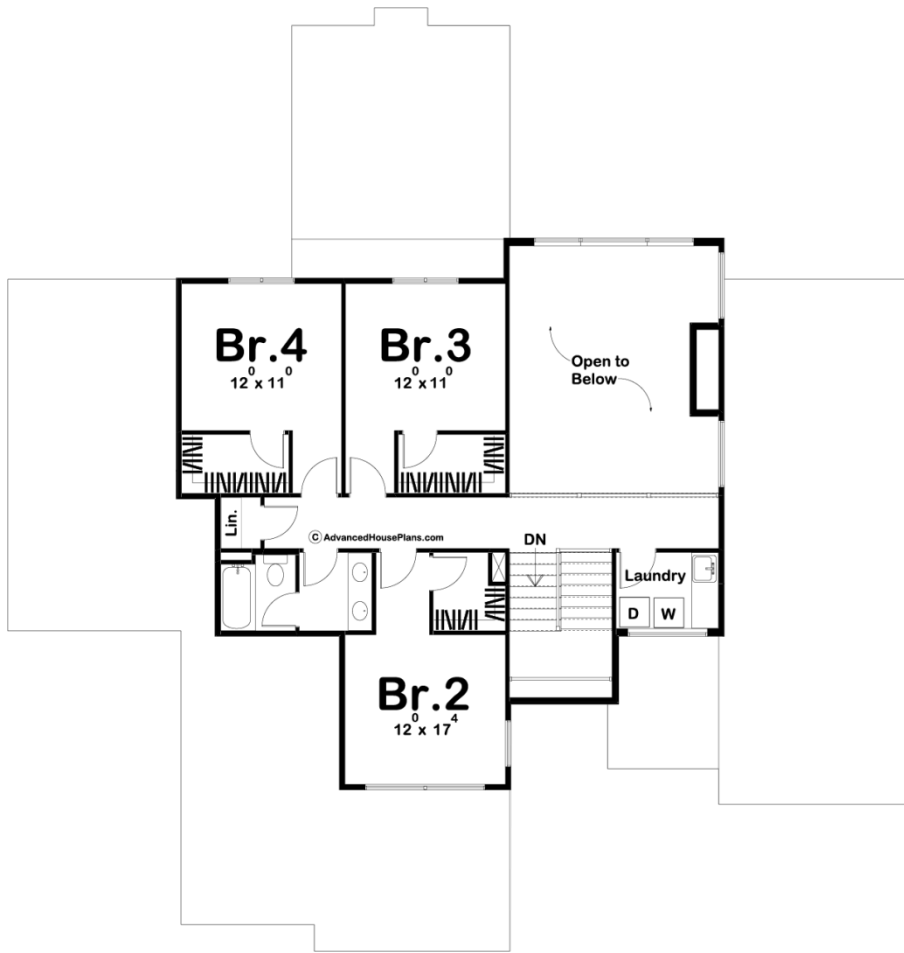




**29711 - Hollis Heights Data Sheet**

2495 SQ FT	4 BEDS	3 BATHS	3 BAYS	68' 0" WIDE	71' 0" DEEP
---------------	-----------	------------	-----------	----------------	----------------





## Construction Specs

### Layout

Bedrooms	4
Bathrooms	3
Garage Bays	3

### Square Footage

Main Level	1594 Sq. Ft.
Second Level	901 Sq. Ft.
Garage	1102 Sq. Ft.
Total Finished Area	2495 Sq. Ft.

### Exterior Dimensions

Width	68' 0"
Depth	71' 0"

### Default Construction Stats

*Stats are unique to the individual plan.*

Foundation Type	Basement
-----------------	----------

Exterior Wall Construction	2x4
Roof Pitches	5/12 Primary, 3/12 Secondary
Foundation Wall Height	9'
Main Wall Height	9'
Second Wall Height	8'

## Plan Description

The amazing Hollis Heights plan brings a bold, modern style to give it amazing curb appeal. The stunning exterior combines wood and stone with large modern windows. Just inside you will be amazed by the functional living space layout. The kitchen with a walk-in pantry flows perfectly into the dining room and great room that is warmed by a tall fireplace. The great room is sure to amaze with its 2 story ceiling and large windows to the rear of the home. The master suite is perfectly situated with his/her vanities, a walk-in shower, and an enclosed toilet. The master closet has functional access to a built-in dresser. Just up the stairs, you will find 3 bedrooms that share a conveniently located hall bathroom. Take your entertaining game up a level with a great covered patio that includes an outdoor firepit off of the rear of this house.