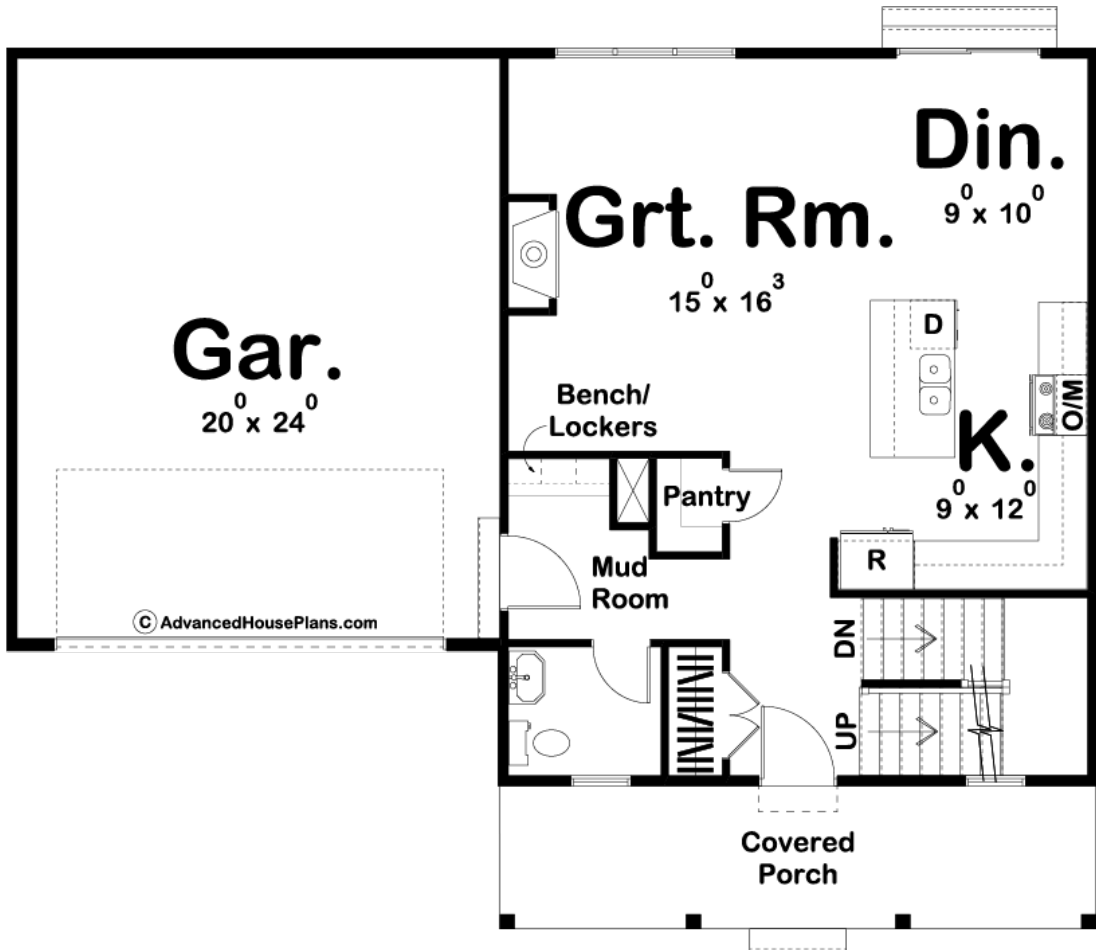


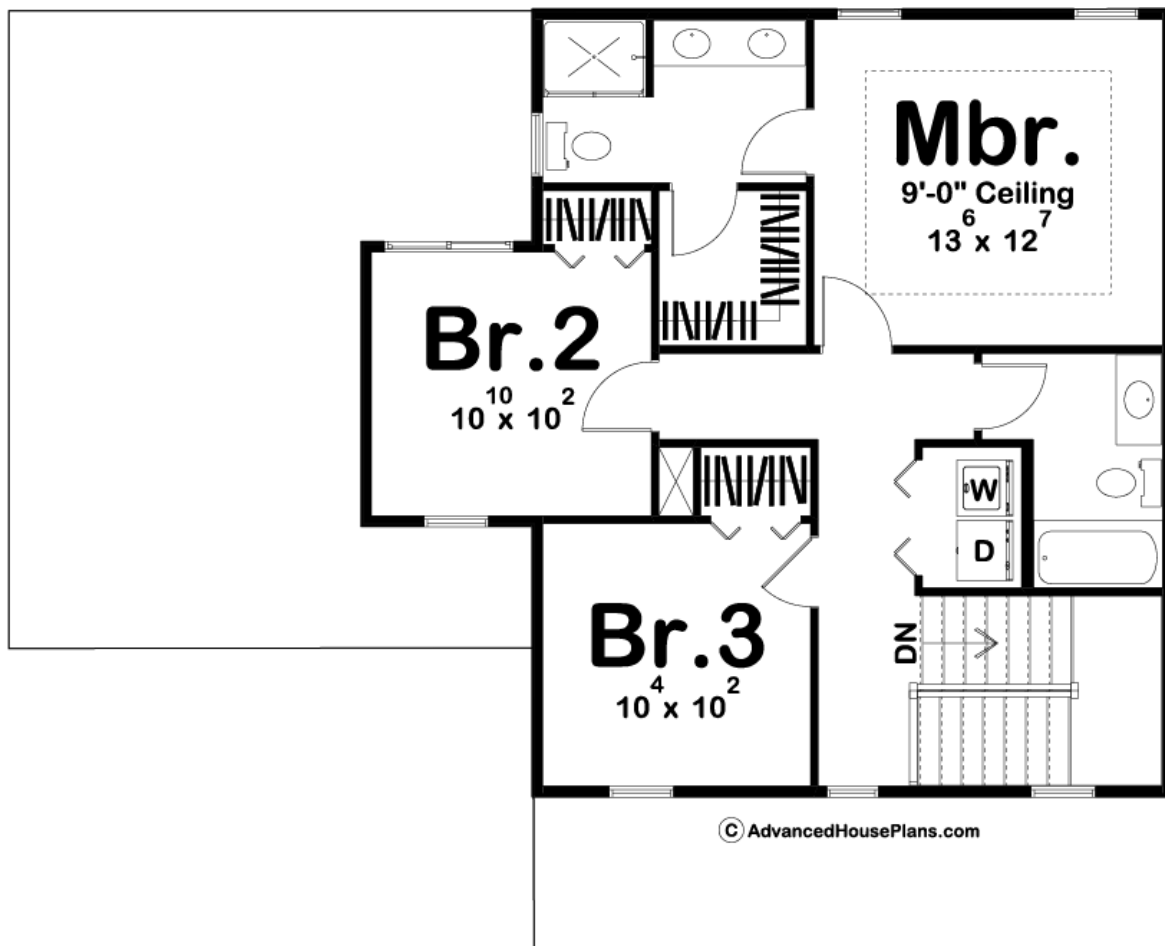
ADVANCED
HOUSE PLANS



29889 - Hopkins Data Sheet

1500 SQ FT	3 BEDS	3 BATHS	2 BAYS	47' 0" WIDE	37' 0" DEEP
---------------	-----------	------------	-----------	----------------	----------------





Construction Specs

Layout

Bedrooms	3
Bathrooms	3
Garage Bays	2

Square Footage

Main Level	749 Sq. Ft.
Second Level	751 Sq. Ft.
Covered Area	148 Sq. Ft.
Garage	502 Sq. Ft.
Total Finished Area	1500 Sq. Ft.

Exterior Dimensions

Width	47' 0"
Depth	37' 0"

Default Construction Stats

Stats are unique to the individual plan.

Foundation Type	Basement
Exterior Wall Construction	2x4
Roof Pitches	6/12 Primary
Foundation Wall Height	9'
Main Wall Height	9'
Second Wall Height	8'

Plan Description

The Hopkins plan is a beautiful traditional style home. The exterior brings together features from multiple different styles. The board and batten siding is highlighted with wood accents, a wood garage door, and a large front covered porch. The main floor features an open layout. The great room is warmed by a fireplace and has excellent views to the rear of the home through a trio of windows. The L-shaped kitchen includes a large island with a snack bar and a walk-in pantry. The dining room accesses the rear of the home through a sliding glass door. Upstairs, you'll find 3 bedrooms. The master bedroom lies under a trayed ceiling and features a bathroom with a dual vanity, a walk-in shower, and a walk-in closet. Bedrooms 2 and 3 share a centrally located hall bathroom. Back on the main level, the home's 2-car garage accesses the home through a convenient mud room with a bench and lockers.