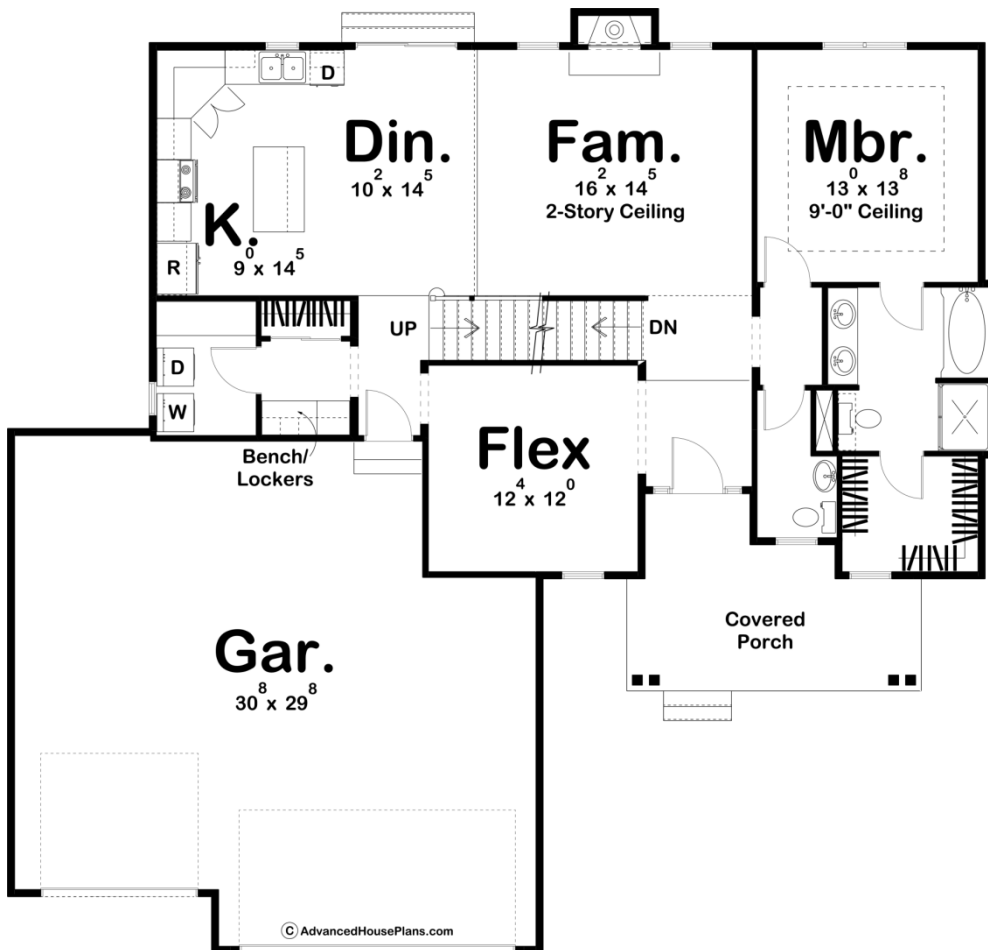
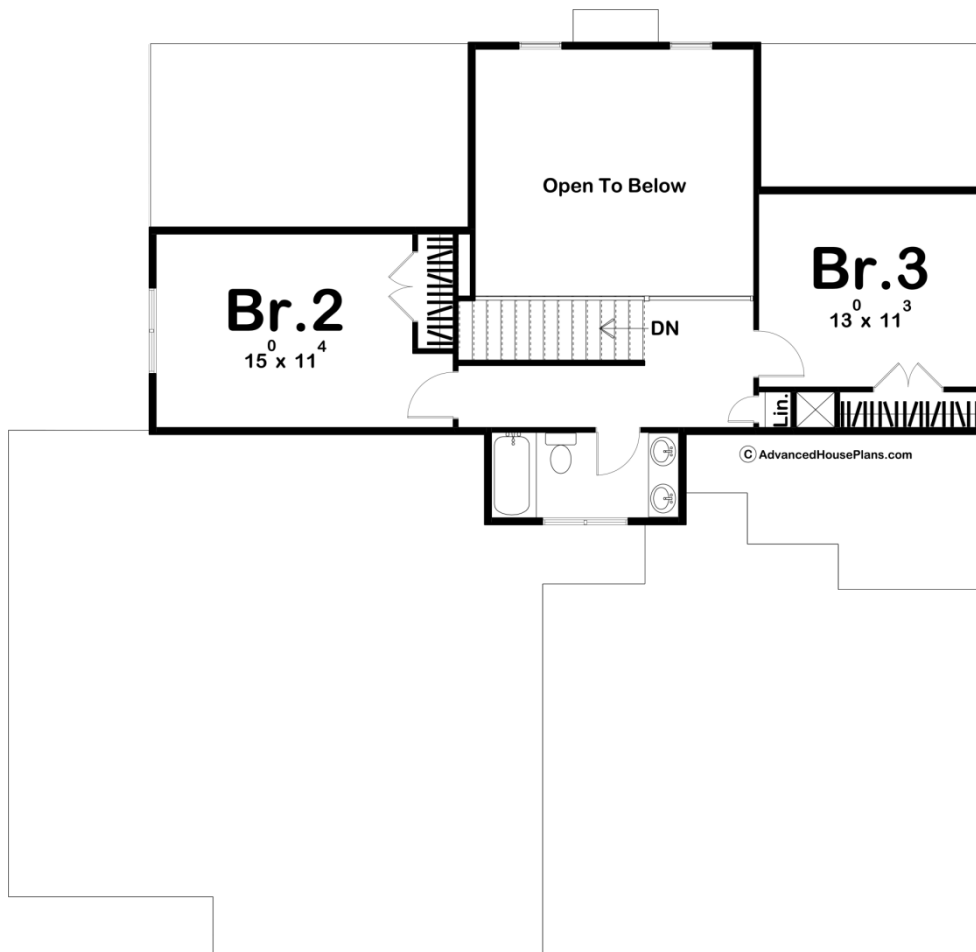




**29681 - Hutchins Data Sheet**

1947 SQ FT	3 BEDS	3 BATHS	3 BAYS	58' 0" WIDE	56' 0" DEEP
---------------	-----------	------------	-----------	----------------	----------------





## Construction Specs

### Layout

Bedrooms	3
Bathrooms	3
Garage Bays	3

### Square Footage

Main Level	1373 Sq. Ft.
Second Level	574 Sq. Ft.
Garage	850 Sq. Ft.
Total Finished Area	1947 Sq. Ft.

### Exterior Dimensions

Width	58' 0"
Depth	56' 0"
Ridge Height	26' 0"
<i>Calculated from main floor line</i>	

## Default Construction Stats

*Stats are unique to the individual plan.*

Foundation Type	Basement
Exterior Wall Construction	2x4
Roof Pitches	12/12 Primary, 8/12 4/12 Secondary
Foundation Wall Height	9'
Main Wall Height	9'
Second Wall Height	8'

## Plan Description

Featuring a beautiful modern farmhouse exterior facade, the Hutchins is a charming 1.5 story house plan with a great floor plan to match! This 3 bedroom home has a 2 story great room perfect for entertaining. Once inside the home, you are greeted with a multi-functional flex room that leads to the kitchen or moves forward into the Great room with a soaring 2 story ceiling. The master suite has a tub and a shower and roomy walk-in closet. On the opposite side of the home, cooking will be a breeze with a large island in the kitchen and spacious walk-in pantry to keep things organized. Upstairs the house plan has 2 secondary bedrooms with a shared bath. There is a small catwalk-style landing that overlooks the great room adding a unique feel to this impressive 1.5 story home. As always any Advanced House Plans home plan can be customized to fit your needs with our alteration department. Whether you need to add another garage stall, change the front elevation, stretch the home larger or just make the home plan more affordable for your budget we can do that and more for you at Ahp.