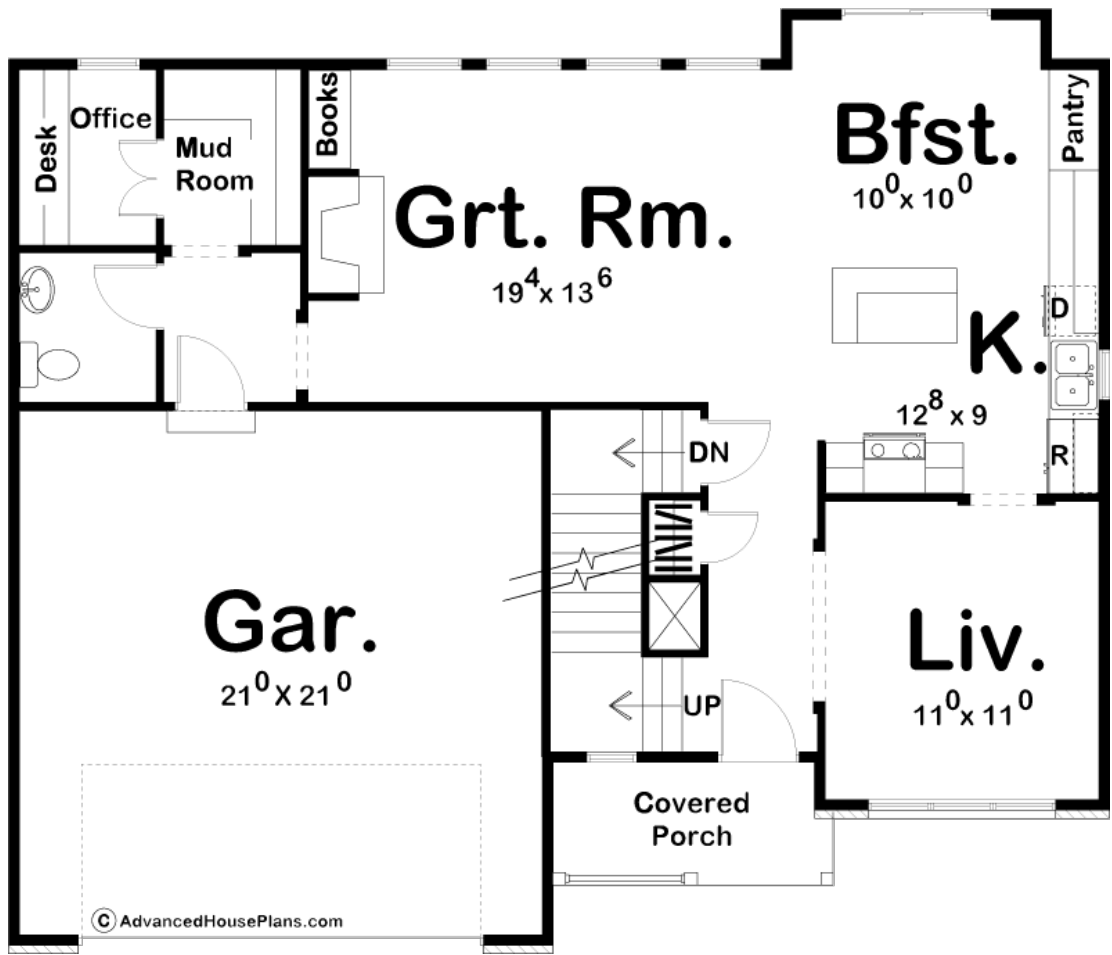
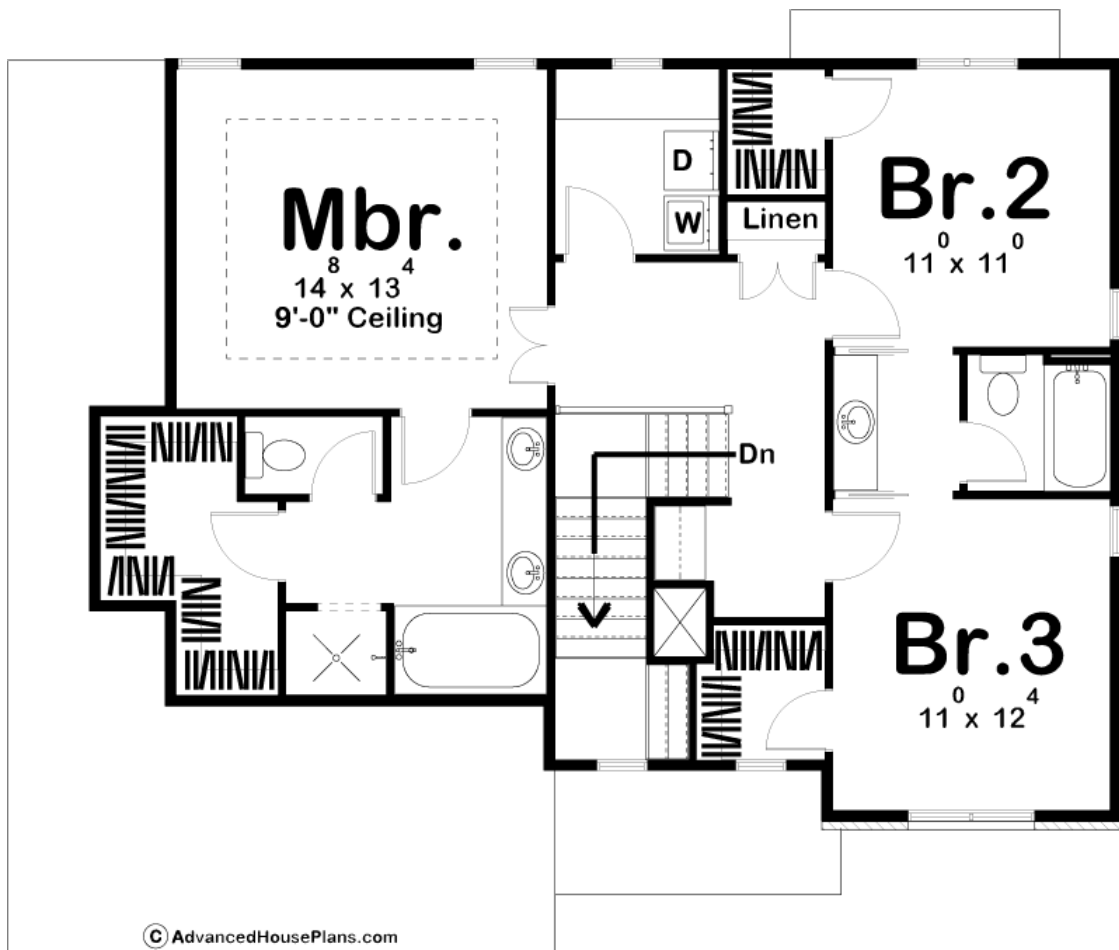




29198 - Jamestown Data Sheet

1977 SQ FT	3 BEDS	3 BATHS	2 BAYS	44' 0" WIDE	38' 0" DEEP
---------------	-----------	------------	-----------	----------------	----------------





## Construction Specs

### Layout

Bedrooms	3
Bathrooms	3
Garage Bays	2

### Square Footage

Main Level	979 Sq. Ft.
Second Level	998 Sq. Ft.
Garage	459 Sq. Ft.
Total Finished Area	1977 Sq. Ft.

### Exterior Dimensions

Width	44' 0"
Depth	38' 0"
Ridge Height	28' 0"
<i>Calculated from main floor line</i>	

**Default Construction Stats**  
*Stats are unique to the individual plan.*

Foundation Type	Basement
Exterior Wall Construction	2x4
Roof Pitches	8/12
Foundation Wall Height	9'
Main Wall Height	9'
Second Wall Height	8'

**Plan Description**

29198 JamestownClassic traditional styling contributes to the inviting character of this 3-bedroom, 2-story house plan. A covered front porch shelters the entry where guests are treated to immediate views into the sunny living room. Farther inside, the kitchen and breakfast area exchange open views with the great room, which showcases a fireplace, built-in bookshelves and a bank of tall windows to the rear. An alcove just off the great room grants access to the 2-car garage, a powder bath, mud room and an office with built-in desk.On the second level, the master suite includes a bath area with dual vanities, compartmented toilet and walk-in closet. Bedrooms 2 and 3 each feature walk-in closets and share a Jack-n-Jill bath. A conveniently located linen closet and laundry room serves all bedrooms.