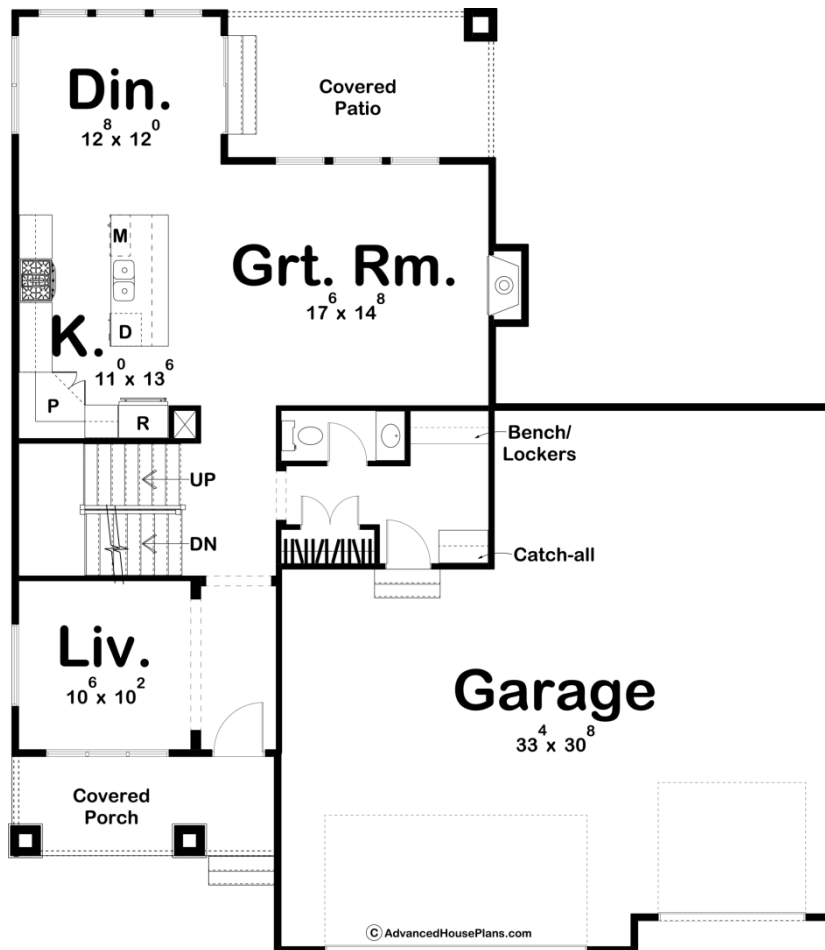
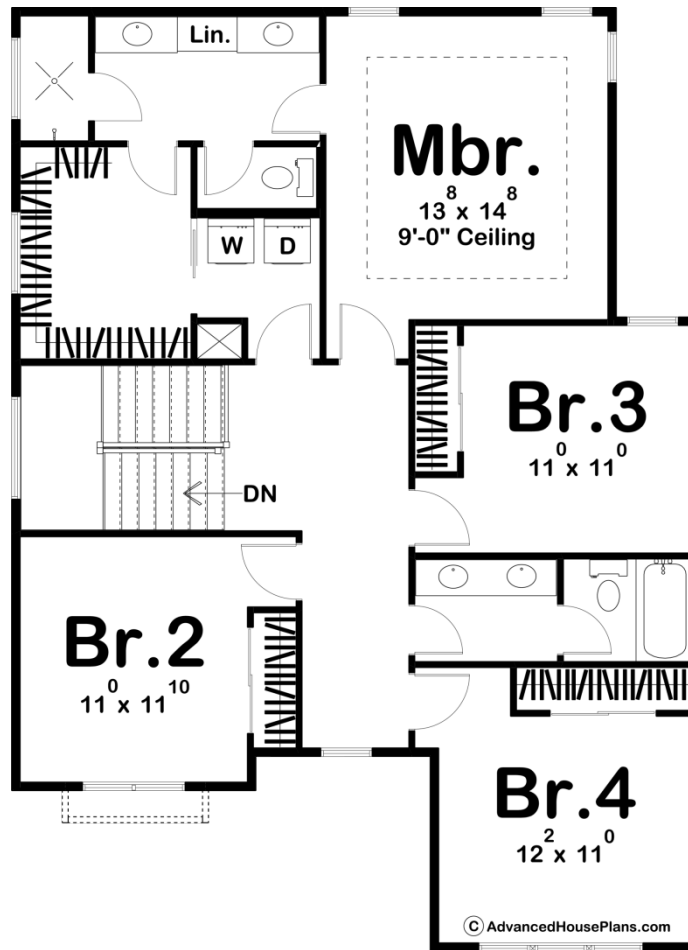




29655 - Joelle Data Sheet

2230 SQ FT	4 BEDS	3 BATHS	3 BAYS	50' 0" WIDE	57' 4" DEEP
---------------	-----------	------------	-----------	----------------	----------------





Construction Specs

Layout

Bedrooms	4
Bathrooms	3
Garage Bays	3

Square Footage

Main Level	1027 Sq. Ft.
Second Level	1203 Sq. Ft.
Garage	967 Sq. Ft.
Total Finished Area	2230 Sq. Ft.

Exterior Dimensions

Width	50' 0"
Depth	57' 4"
Ridge Height	31' 0"
<i>Calculated from main floor line</i>	

Default Construction Stats

Stats are unique to the individual plan.

Foundation Type	Basement
Exterior Wall Construction	2x4
Roof Pitches	6/12 Primary, 8/12 4/12 Secondary
Foundation Wall Height	9'
Main Wall Height	9'
Second Wall Height	9'

Plan Description

The Joelle is a charming Modern Farmhouse style plan. The front elevation features an impressive front porch with wood columns and stone bases. Upon entry you will see the living room and a u shaped staircase. The Great Room is warmed by a fireplace and has views to the covered patio through 3 large windows. The kitchen is great for the cook in the house and it has ample storage with the walk in pantry. Upstairs in this 2 story house plan you have 4 bedrooms. Bedrooms 2, 3 and 4 share a centrally located bathroom that comes with dual vanities. The master suite includes a beautiful bathroom that features split vanities, a walk-in shower and a private stool room. The master closet has convenient access to the laundry room. This 2 story house plan is great for your growing family!