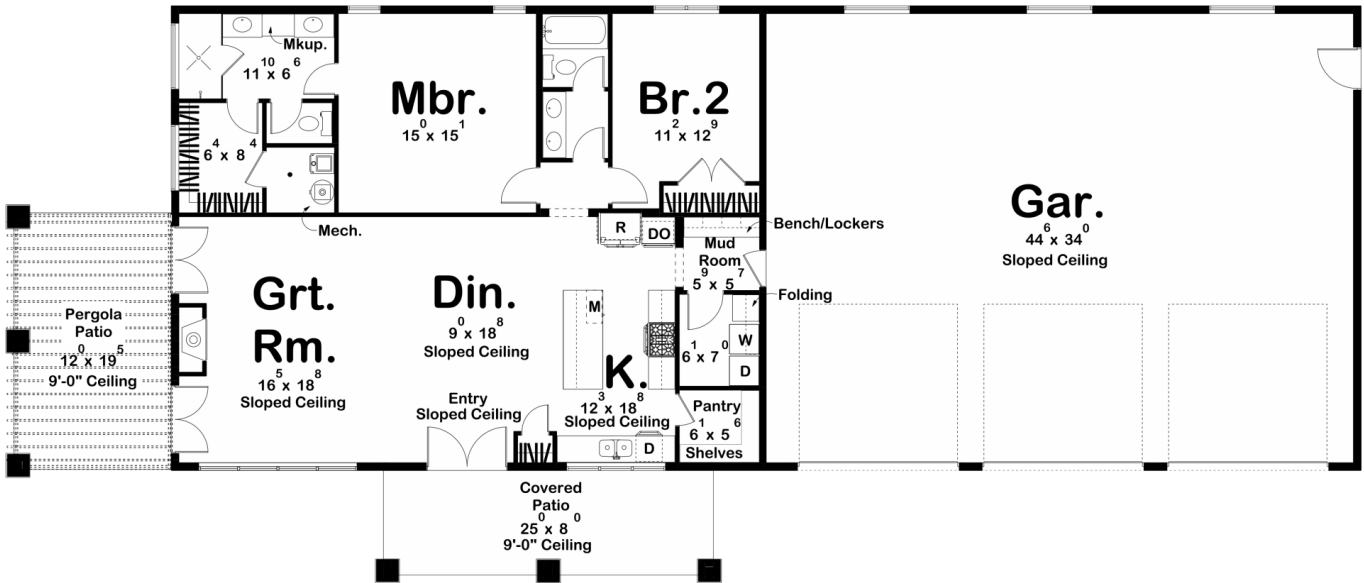




30206 - Jonesboro Data Sheet

1575 SQ FT	2 BEDS	2 BATHS	3 BAYS	102' 4" WIDE	43' 4" DEEP
---------------	-----------	------------	-----------	-----------------	----------------



Construction Specs

Layout

Bedrooms

Bathrooms	2
Garage Bays	3

Square Footage

Main Level	1575 Sq. Ft.
Covered Area	423 Sq. Ft.
Garage	1575 Sq. Ft.
Total Finished Area	1575 Sq. Ft.

Exterior Dimensions

Width	102' 4"
Depth	43' 4"
Ridge Height <i>Calculated from main floor line</i>	18' 8"

Default Construction Stats

Stats are unique to the individual plan.

Foundation Type	Slab
Exterior Wall Construction	2x6
Roof Pitches	Primary 2/12, Secondary 4/12
Main Wall Height	12'

Plan Description

This modern barndominium has a touch that makes the home not only feel luxurious, but also comfortable. As soon as you step in through the large three car garage, you're greeted by a beautiful mudroom and a great open space for gathering with the family. The kitchen features a walk-in pantry and a wide space with a view straight to the great room, leaving no guest unnoticed. There are two bedrooms in the Jonesboro plan, one with a shared bath, and the other with a large vanity, soaking tub, and walk-in closet. Step outside onto the covered patio and under the gorgeous pergola, perfect for adding lights to create the perfect mood for your evenings. This barndominium is unlike any other, and a perfect space for all things entertaining.