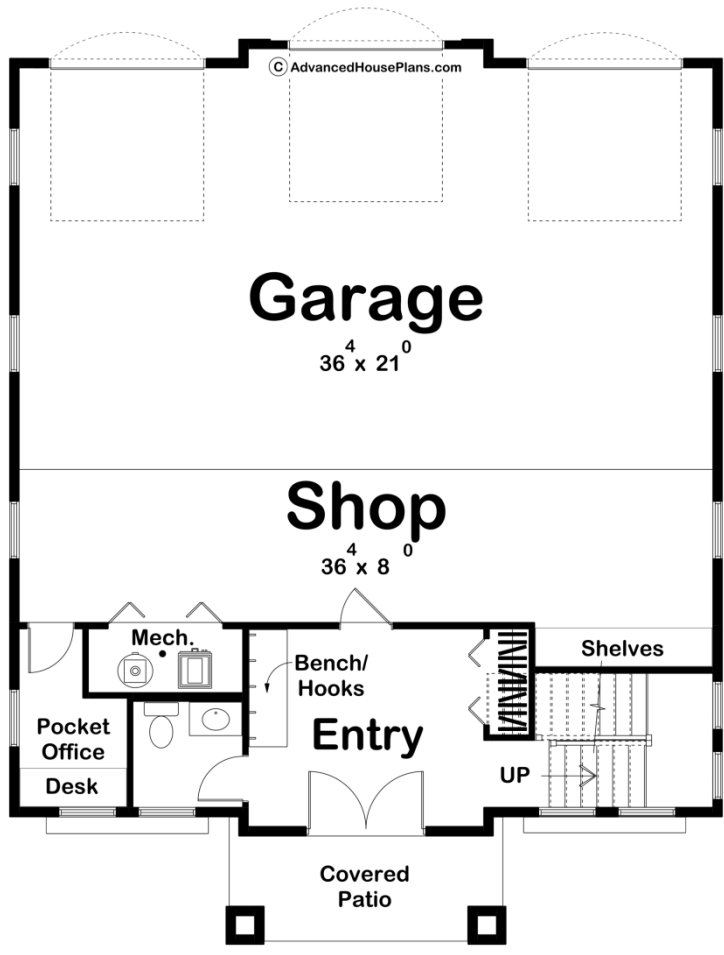
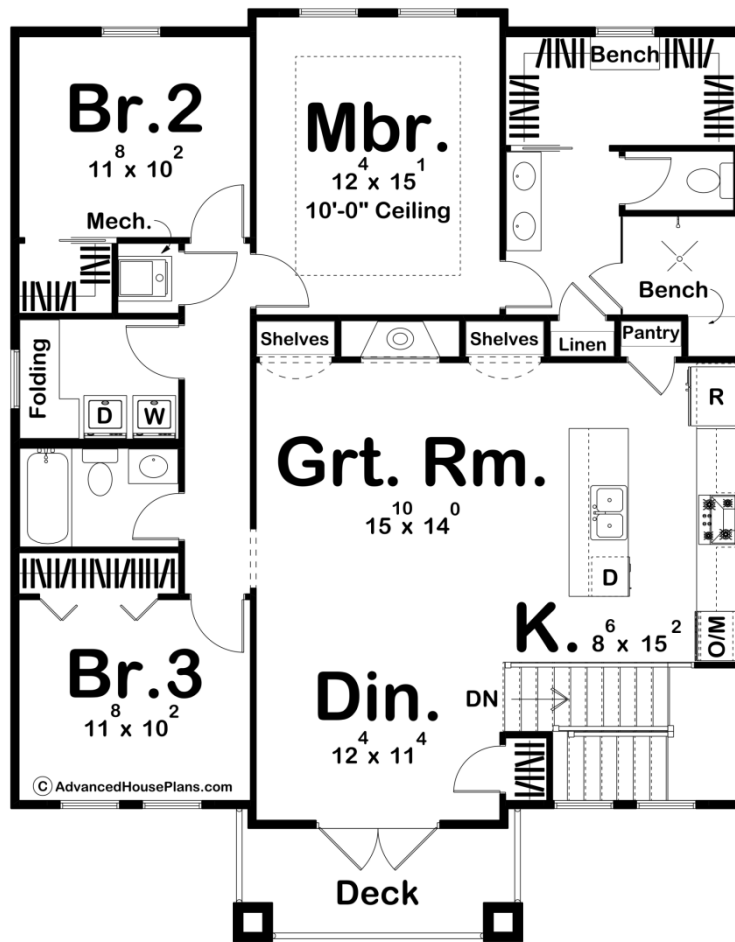




30214 - Jude Data Sheet

1754 SQ FT	3 BEDS	3 BATHS	3 BAYS	37' 0" WIDE	47' 0" DEEP
---------------	-----------	------------	-----------	----------------	----------------





Construction Specs

Layout

Bedrooms	3
Bathrooms	3
Garage Bays	3

Square Footage

Main Level	355 Sq. Ft.
Second Level	1399 Sq. Ft.
Covered Area	83 Sq. Ft.
Garage	1098 Sq. Ft.
Total Finished Area	1754 Sq. Ft.

Exterior Dimensions

Width	37' 0"
Depth	47' 0"
Ridge Height	33' 9"
<i>Calculated from main floor line</i>	

Default Construction Stats

Stats are unique to the individual plan.

Foundation Type	Slab
Exterior Wall Construction	2x4
Roof Pitches	Primary 8/12, Secondary 14/12
Main Wall Height	10'
Second Wall Height	9'

Plan Description

The Jude plan is a Modern European Cottage that would fit in, in just about any location you put it. With the touches of a cottage style along with the modern curb appeal, it is a plan that could go coast to coast. This plan has a large three car garage, accompanied by a shop area and office that lead into the entryway. This unique floor plan carries you upstairs to the home, giving the illusion of a multidimensional home while still being practical. Upstairs you will find all the bedrooms, as well as the great room and kitchen. The Jude plan has a great open space for entertaining, but a closed off area for bedrooms. The Master bedroom is connected with two large walk-in closets, as well as a double vanity while bedrooms two and three share a bathroom.