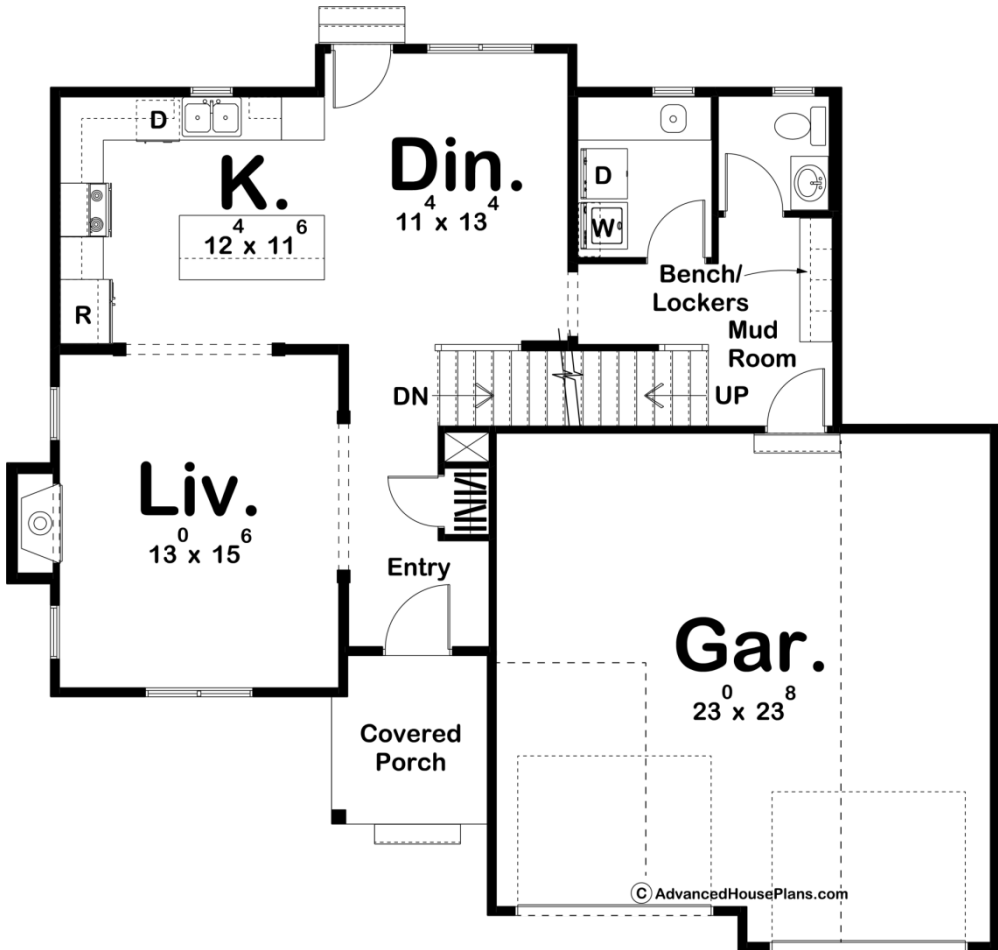
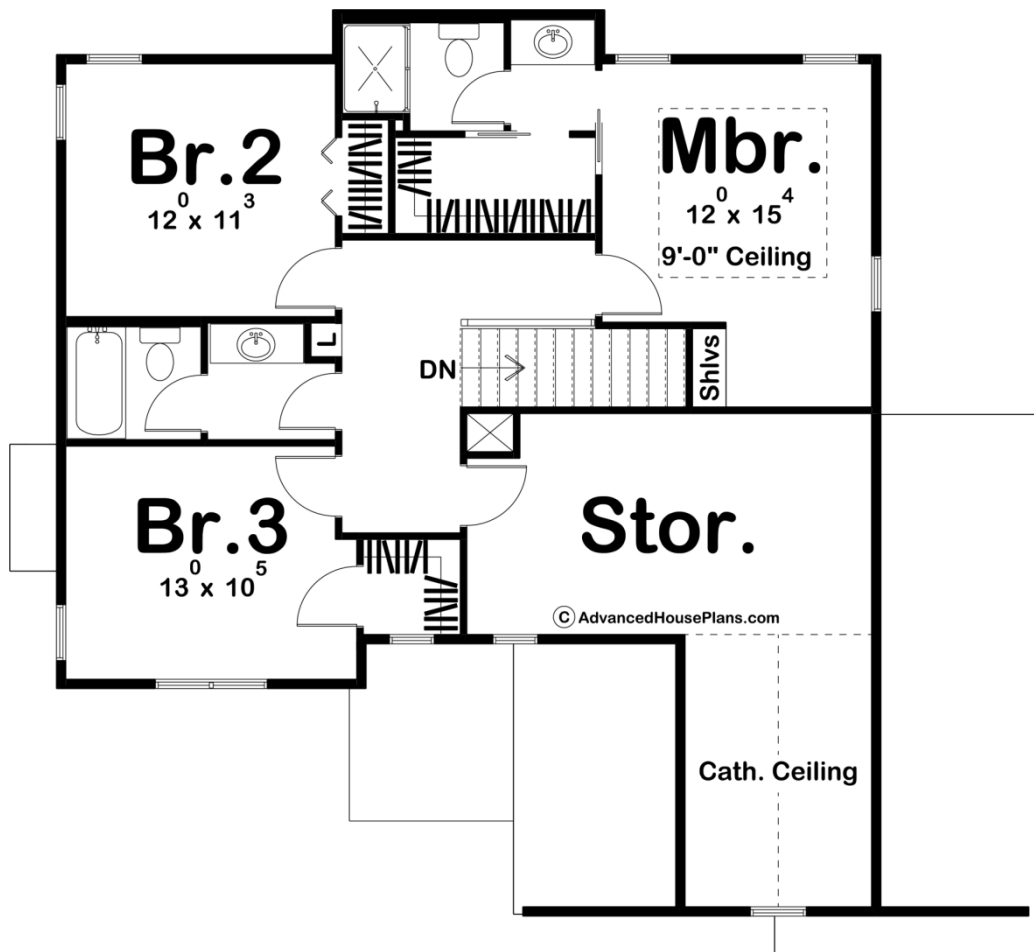




29144 - Kemper Data Sheet

1641 SQ FT	3 BEDS	3 BATHS	2 BAYS	44' 0" WIDE	42' 0" DEEP
---------------	-----------	------------	-----------	----------------	----------------





## Construction Specs

### Layout

Bedrooms	3
Bathrooms	3
Garage Bays	2

### Square Footage

Main Level	854 Sq. Ft.
Second Level	787 Sq. Ft.
Garage	547 Sq. Ft.
Total Finished Area	1641 Sq. Ft.

### Exterior Dimensions

Width	44' 0"
Depth	42' 0"
Ridge Height	26' 0"
<i>Calculated from main floor line</i>	

**Default Construction Stats**

*Stats are unique to the individual plan.*

Foundation Type	Basement
Exterior Wall Construction	2x4
Roof Pitches	6/12 Primary, 10/12 Secondary
Foundation Wall Height	9'
Main Wall Height	9'
Second Wall Height	8'

**Plan Description**

The appearance of this family-friendly, Traditional-style, 2-story house plan imparts a sense of solidity and simpler times. Inside from the covered front porch, guests are received into the openly defined living room with its warming fireplace. A few steps farther in reveal the island kitchen and adjacent dining area with access to the outdoors. A utility area hosts the staircase to the upper level, and includes a laundry room, powder bath and mud room with built-in bench -- which accesses the 2-car garage. Upstairs, the master suite is separated from the secondary bedrooms for privacy. The master bath includes a compartmented toilet and shower, along with a sizeable walk-in closet. Bedrooms 2 and 3 share a central hall bath. Across from bedroom 2, an unfinished storage area adds the potential of 310 sq. ft. of usable space, where the possibilities are endless.