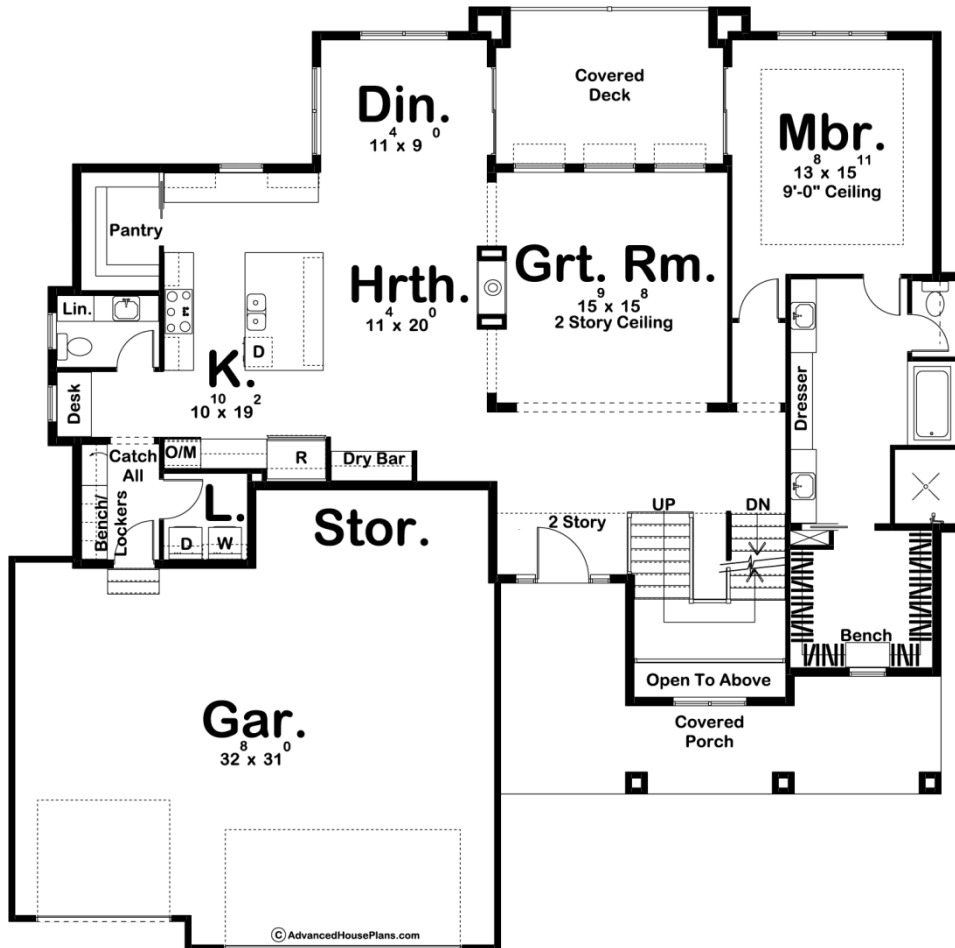
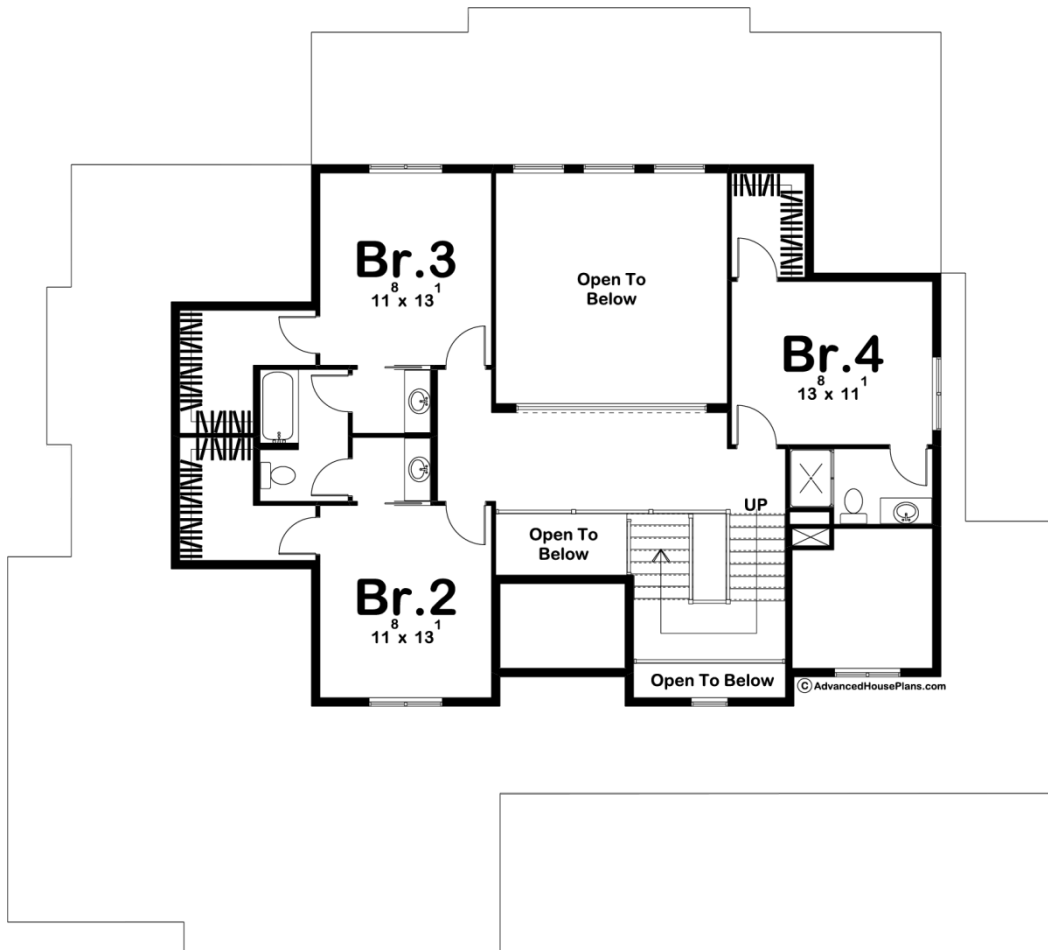




29525 - Kingston Data Sheet

3042 SQ FT	4 BEDS	4 BATHS	3 BAYS	65' 0" WIDE	62' 0" DEEP
---------------	-----------	------------	-----------	----------------	----------------





Construction Specs

Layout

Bedrooms	4
Bathrooms	4
Garage Bays	3

Square Footage

Main Level	2005 Sq. Ft.
Second Level	1037 Sq. Ft.
Garage	930 Sq. Ft.
Total Finished Area	3042 Sq. Ft.

Exterior Dimensions

Width	65' 0"
Depth	62' 0"
Ridge Height	30' 0"
<i>Calculated from main floor line</i>	

Default Construction Stats

Stats are unique to the individual plan.

Foundation Type	Basement
Exterior Wall Construction	2x4
Roof Pitches	6/12
Foundation Wall Height	9'
Main Wall Height	9'
Second Wall Height	8'

Plan Description

A seemingly endless array of enticing amenities are found in this 1 1/2 story, Craftsman-style house plan. A deep, covered front porch greets guests, who upon entering the home, are treated to views of the great room. The great room captivates its occupants with a soaring two-story-high ceiling and a double sided fireplace that is viewable from the great room and the hearth room. A covered deck is accessed from the dining area for outdoor dining or simply relaxing. The kitchen, with island workspace and walk-in pantry, accesses a fabulously practical utility area that includes a mudroom with bench and lockers and a laundry room. The master suite includes a master bath with his and her vanities and a walk-in closet with built-in bench. On the second level, bedroom 4 has its own bathroom and walk-in closet. As you walk across the catwalk, you see views below to the great room and entrance. Bedroom 2 and 3 each have their own walk-in closet and share a Hollywood bathroom.