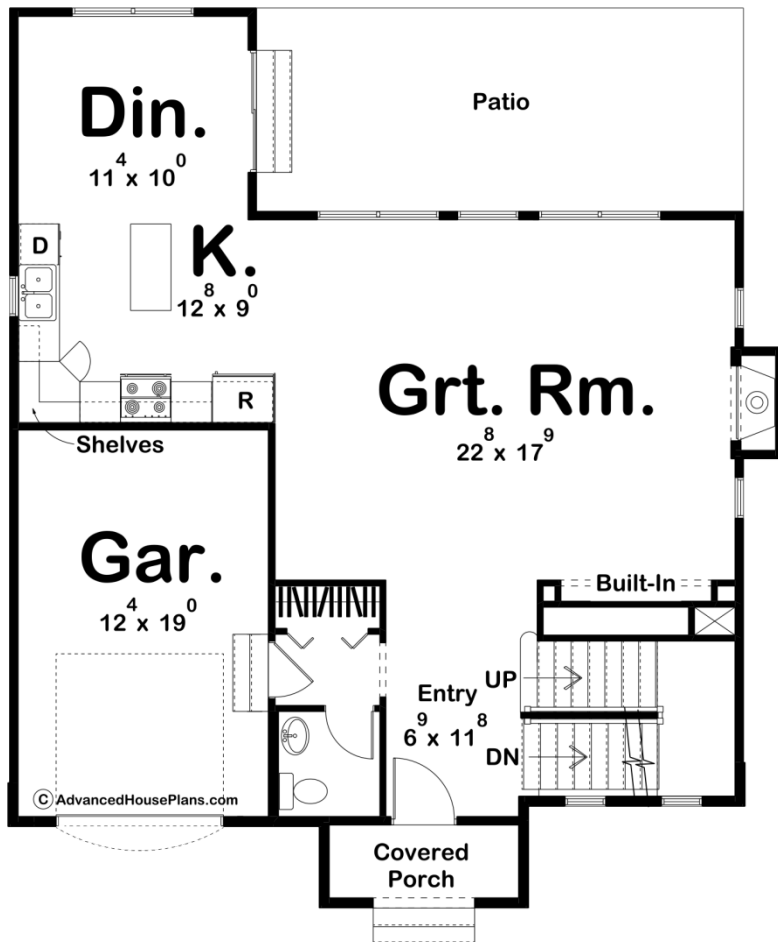
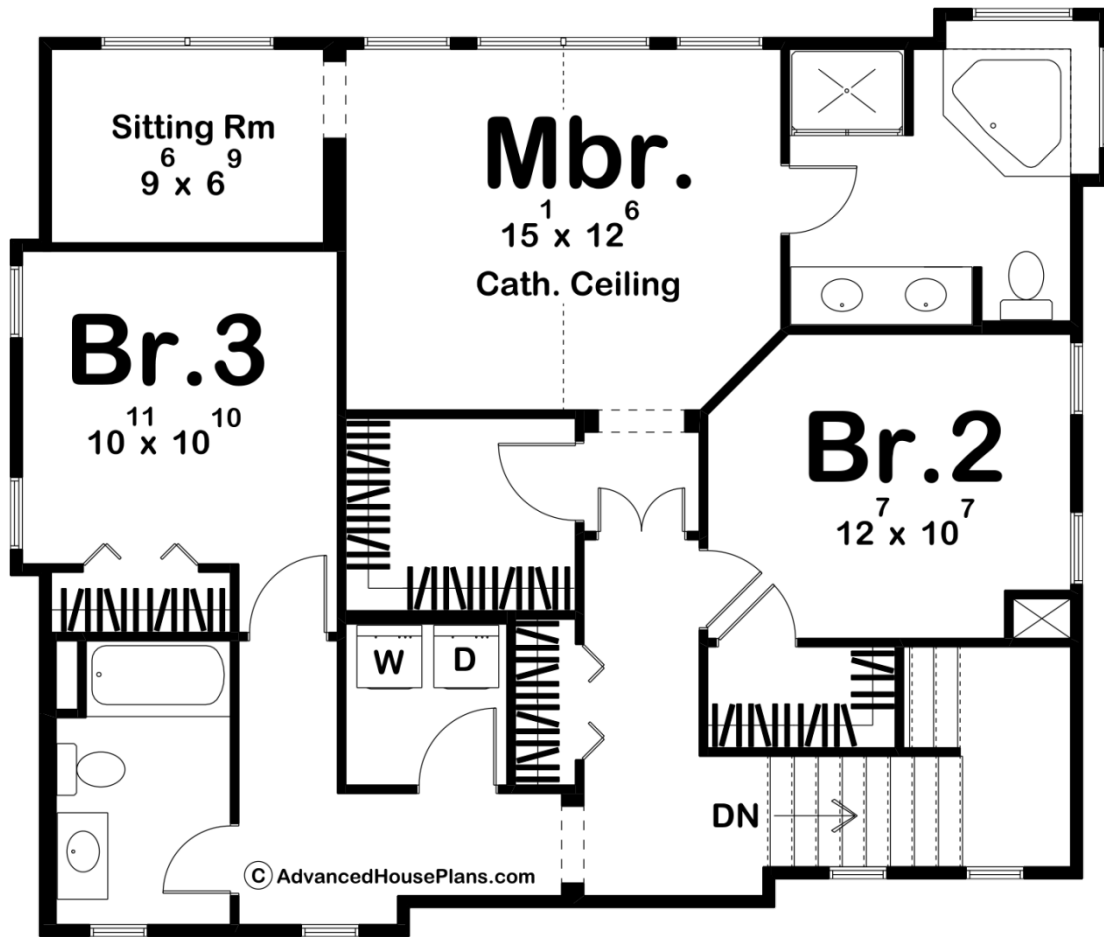




29191 - Lakemont Data Sheet

1976 SQ FT	3 BEDS	3 BATHS	1 BAYS	36' 0" WIDE	44' 0" DEEP
---------------	-----------	------------	-----------	----------------	----------------





Construction Specs

Layout

Bedrooms	3
Bathrooms	3
Garage Bays	1

Square Footage

Main Level	944 Sq. Ft.
Second Level	1032 Sq. Ft.
Garage	242 Sq. Ft.
Total Finished Area	1976 Sq. Ft.

Exterior Dimensions

Width	36' 0"
Depth	44' 0"
Ridge Height	30' 0"
<i>Calculated from main floor line</i>	

Default Construction Stats

Stats are unique to the individual plan.

Foundation Type	Basement
Exterior Wall Construction	2x4
Roof Pitches	7/12 Primary, 12/12 Secondary
Foundation Wall Height	9'
Main Wall Height	10'
Second Wall Height	9'

Plan Description

At just 36 feet wide, this charming French Country-style, 2-story house plan is perfect for narrow lots. The entry hall features an adjacent powder bath, coat closet and access to the 1-car garage. An arched opening, flanked by columns, leads to the great room with fireplace, built-in display niche and sunny views to the rear deck. The great room openly interacts with the island kitchen -- with corner pantry -- and the breakfast area, with access to the rear deck. All sleeping quarters reside on the second level of this home plan, where double doors open into the master suite. The master bedroom showcases a cathedral ceiling, expansive views to the rear and a sunny sitting area. The master bath features dual sinks and a soaking tub situated beneath corner windows. A sizeable walk-in closet is accessed from the suite's entry alcove. Bedrooms 2 and 3 share a hall bath. A laundry area and linen closet are centrally located to serve all bedrooms.