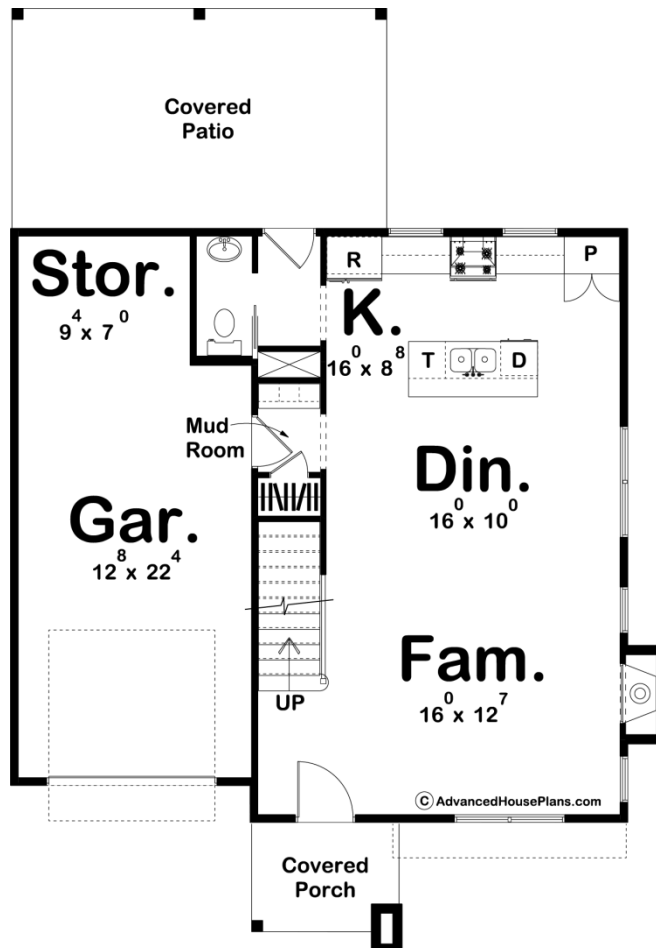
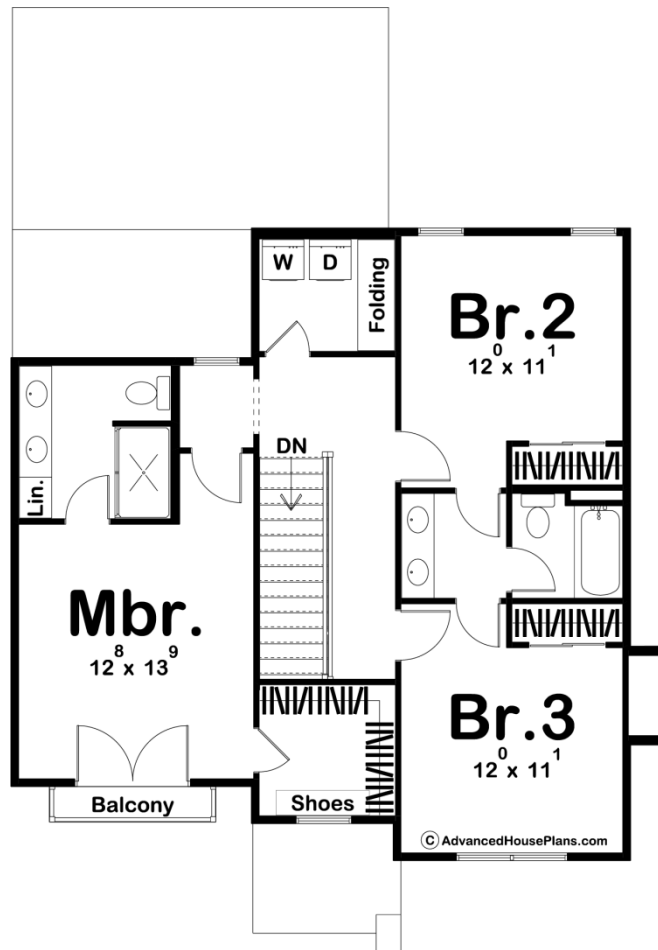




**30139 - Lakeview Data Sheet**

|               |           |            |           |                |                |
|---------------|-----------|------------|-----------|----------------|----------------|
| 1500<br>SQ FT | 3<br>BEDS | 3<br>BATHS | 1<br>BAYS | 36' 0"<br>WIDE | 51' 0"<br>DEEP |
|---------------|-----------|------------|-----------|----------------|----------------|





## Construction Specs

### Layout

|             |   |
|-------------|---|
| Bedrooms    | 3 |
| Bathrooms   | 3 |
| Garage Bays | 1 |

### Square Footage

|                     |              |
|---------------------|--------------|
| Main Level          | 675 Sq. Ft.  |
| Second Level        | 825 Sq. Ft.  |
| Covered Area        | 244 Sq. Ft.  |
| Garage              | 366 Sq. Ft.  |
| Total Finished Area | 1500 Sq. Ft. |

### Exterior Dimensions

|  |        |
|--|--------|
| Width                                  | 36' 0" |
| Depth                                  | 51' 0" |
| Ridge Height                           | 25' 0" |
| <i>Calculated from main floor line</i> |        |

### Default Construction Stats

*Stats are unique to the individual plan.*

|                            |      |
|----------------------------|------|
| Foundation Type            | Slab |
| Exterior Wall Construction | 2x4  |
| Main Wall Height           | 9'   |
| Second Wall Height         | 8'   |

## Plan Description

The Lakeview plan is an efficient 2 story Modern style house plan. The front of the house shows fantastic curb appeal with its covered porch and cedar siding accents. At only 1500 sq. ft., this plan is an efficient plan that lowers the cost-to-build. Inside the home, the family room, dining room, and kitchen flow seamlessly in an open layout. The family room is warmed by a fireplace and the large front windows allow in plenty of natural light. The kitchen includes a working island with a snack bar and a nice reach-in pantry. A powder bath is conveniently located off the rear of the kitchen. On the second floor, you'll find 3 bedrooms. The master suite includes a bathroom with his/her vanities and a walk-in shower. Bedrooms 2 and 3 share a Jack and Jill bathroom.