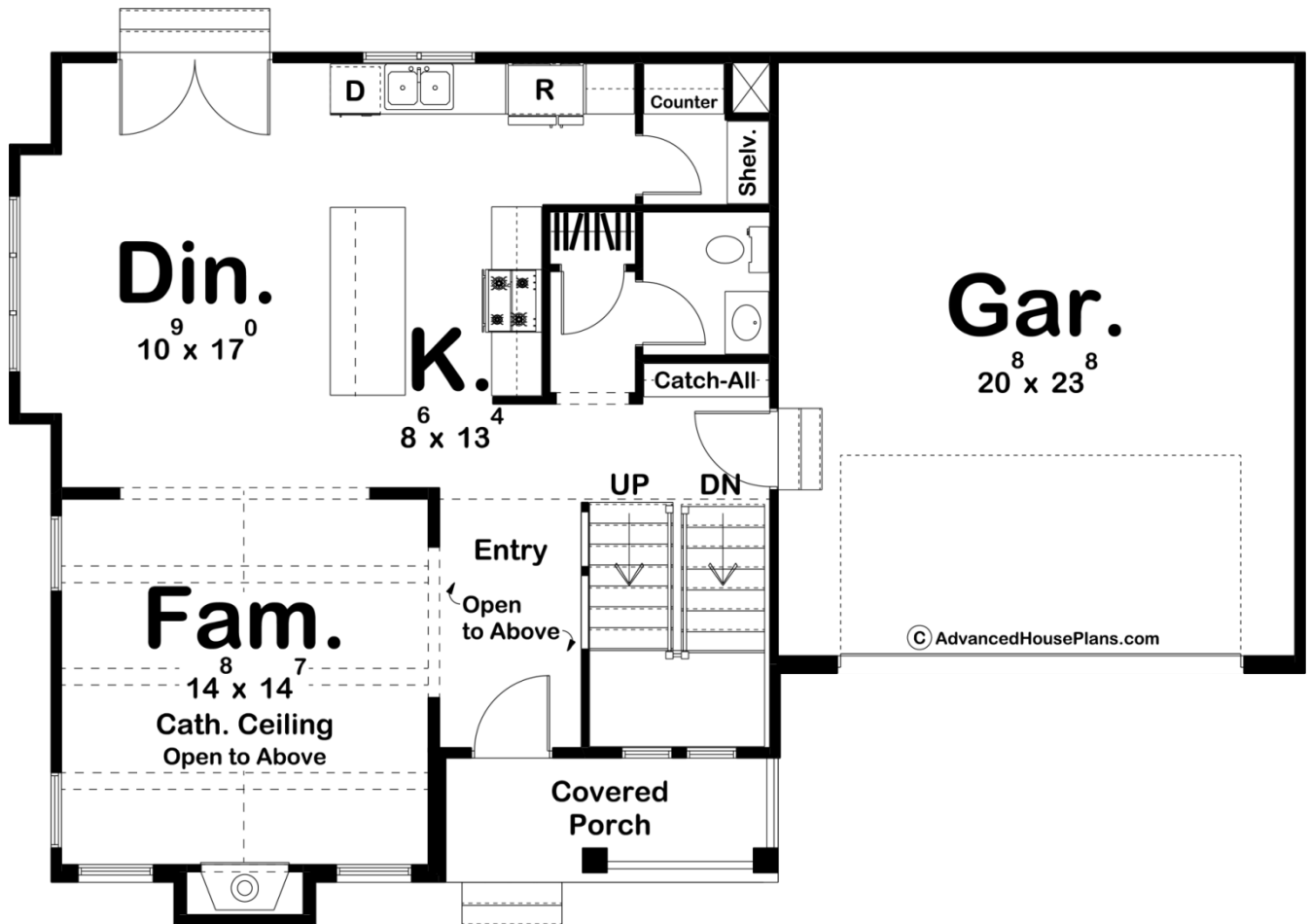
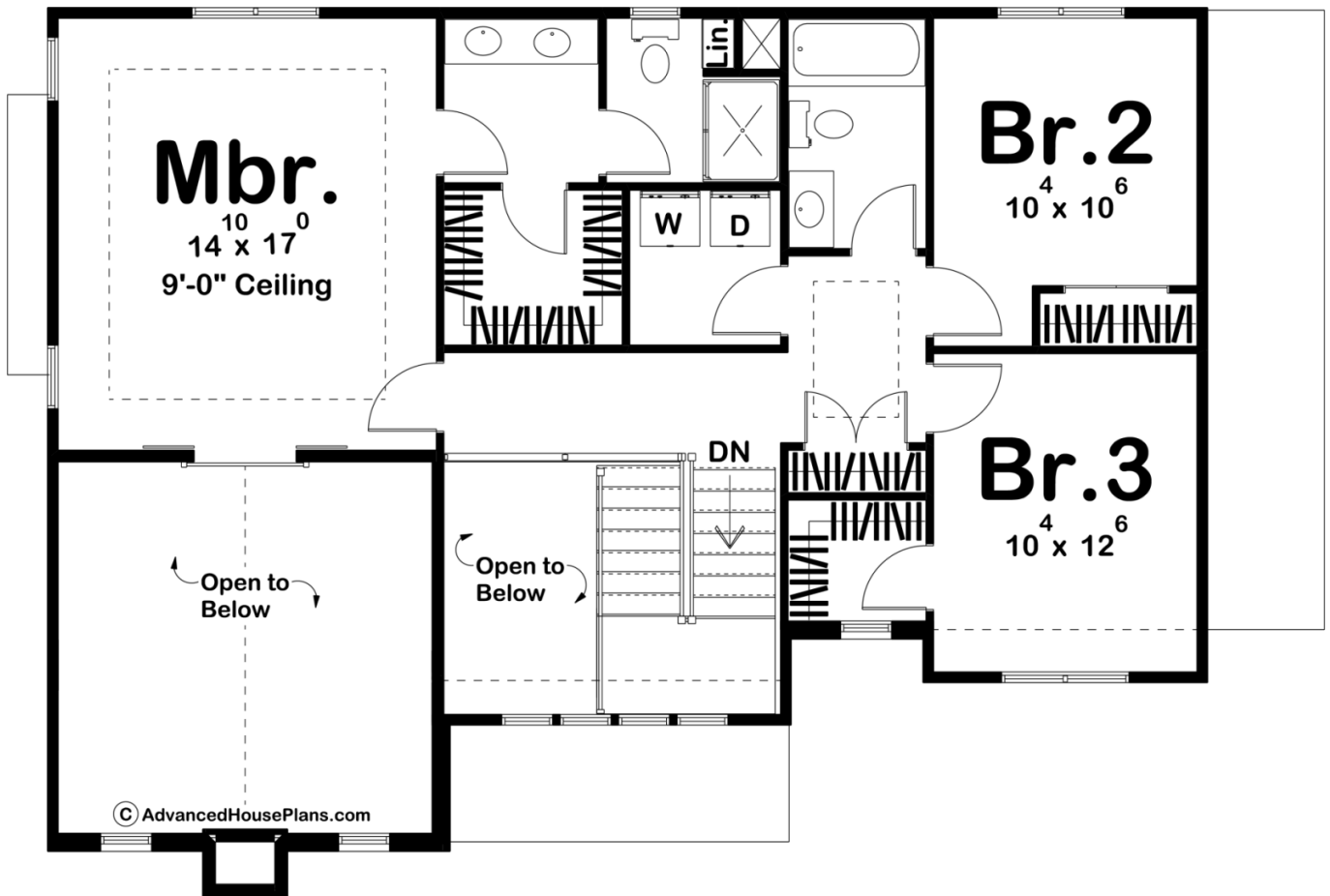




**29932 - Landry Data Sheet**

1812 SQ FT	3 BEDS	3 BATHS	2 BAYS	51' 8" WIDE	34' 8" DEEP
---------------	-----------	------------	-----------	----------------	----------------





## Construction Specs

### Layout

Bedrooms	3
Bathrooms	3
Garage Bays	2

### Square Footage

Main Level	894 Sq. Ft.
Second Level	918 Sq. Ft.
Garage	511 Sq. Ft.
Total Finished Area	1812 Sq. Ft.

### Exterior Dimensions

Width	51' 8"
Depth	34' 8"
Ridge Height	18' 0"
<i>Calculated from main floor line</i>	

## Default Construction Stats

*Stats are unique to the individual plan.*

Foundation Type	Basement
Exterior Wall Construction	2x4
Roof Pitches	8/12 Primary, 14/12 Secondary
Foundation Wall Height	9'
Main Wall Height	9'
Second Wall Height	8'

## Plan Description

The Landry plan is a beautiful modern cottage style house plan. The exterior features a timeless stone chimney combined with brick and lap siding to give it a modern twist on the traditional cottage style. The interior features an elegant floorplan that lives easy. Just inside the home, a stunning family room is adjacent to a 2 story entry. The family room lies under a soaring cathedral ceiling with exposed beams. The home's dining and kitchen flow beautifully in an open layout. The kitchen includes a large island and a walk-in pantry. The second level features 3 bedrooms. The master bedroom lies under a decorative trayed ceiling and features a stunning Juliet balcony that overlooks the family room. The master bathroom features a dual vanity, an enclosed toilet area, and a walk-in closet. Bedrooms 2 and 3 share a centrally located hall bathroom.