

ADVANCED

HOUSE PLANS



30309 - Loveland Data Sheet

2216
SQ FT

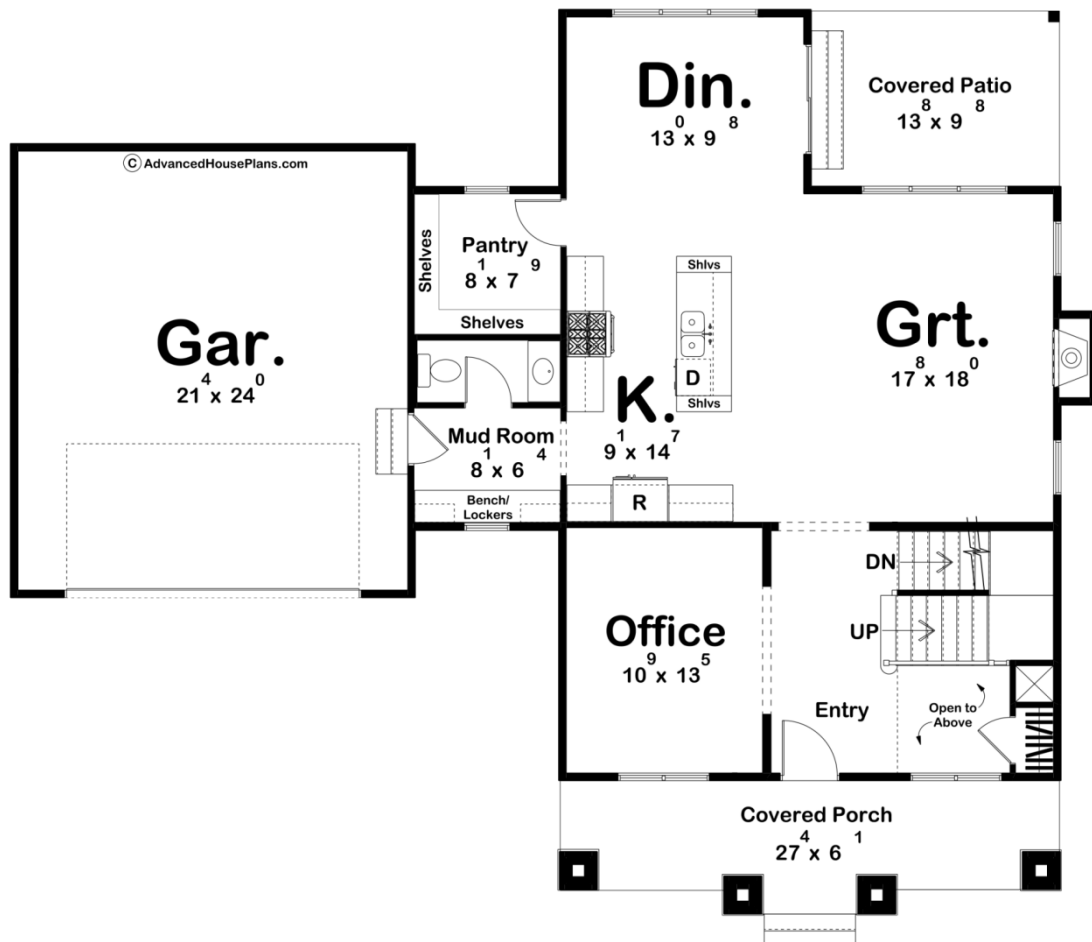
3
BEDS

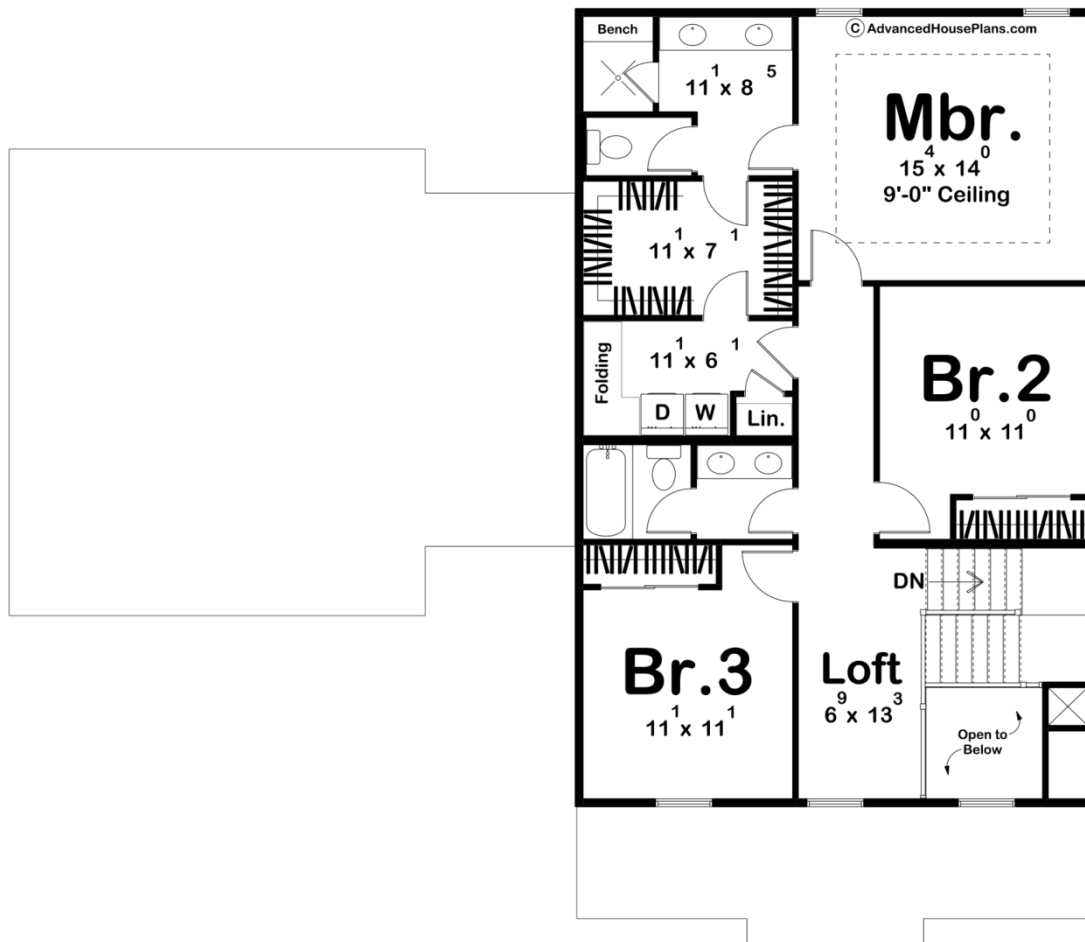
3
BATHS

2
BAYS

59' 4"
WIDE

49' 0"
DEEP





Construction Specs

Layout

Bedrooms	3
Bathrooms	3
Garage Bays	2

Square Footage

Main Level	1181 Sq. Ft.
Second Level	1035 Sq. Ft.
Covered Area	310 Sq. Ft.
Garage	536 Sq. Ft.
Total Finished Area	2216 Sq. Ft.

Exterior Dimensions

Width	59' 4"
Depth	49' 0"
Ridge Height	29' 3"
<i>Calculated from main floor line</i>	

Default Construction Stats
Stats are unique to the individual plan.

Foundation Type	Basement
Exterior Wall Construction	2x4
Roof Pitches	Primary 6/12, Secondary 10/12, 4/12
Foundation Wall Height	9'
Main Wall Height	9'
Second Wall Height	8'

Plan Description

The Loveland is a charming 2-story home packed with tons of character. From the large columns on the front porch, to the exposed rafters on the roof, this home is sure to invite you in. As you walk in the front door, there is a drop area on your right, and an office on your left. Entering further, you will find an open great room, kitchen, and dining space. The great room is surrounded by windows and has a built-in fireplace. The kitchen has a large island and a full walk-in pantry. The dinette is off the kitchen with access to the rear covered patio. Heading upstairs you will find a 3 bedrooms and 2 bathrooms. The master has it's own bathroom with a double vanity and separate toilet space. It has a walk-in closet that connects to the laundry room. The secondary bedrooms share a hall bath. There is a small loft space overlooking the front entry below. Back on the main, this home has a 2-car garage with a mudroom space and half bath off the mudroom.