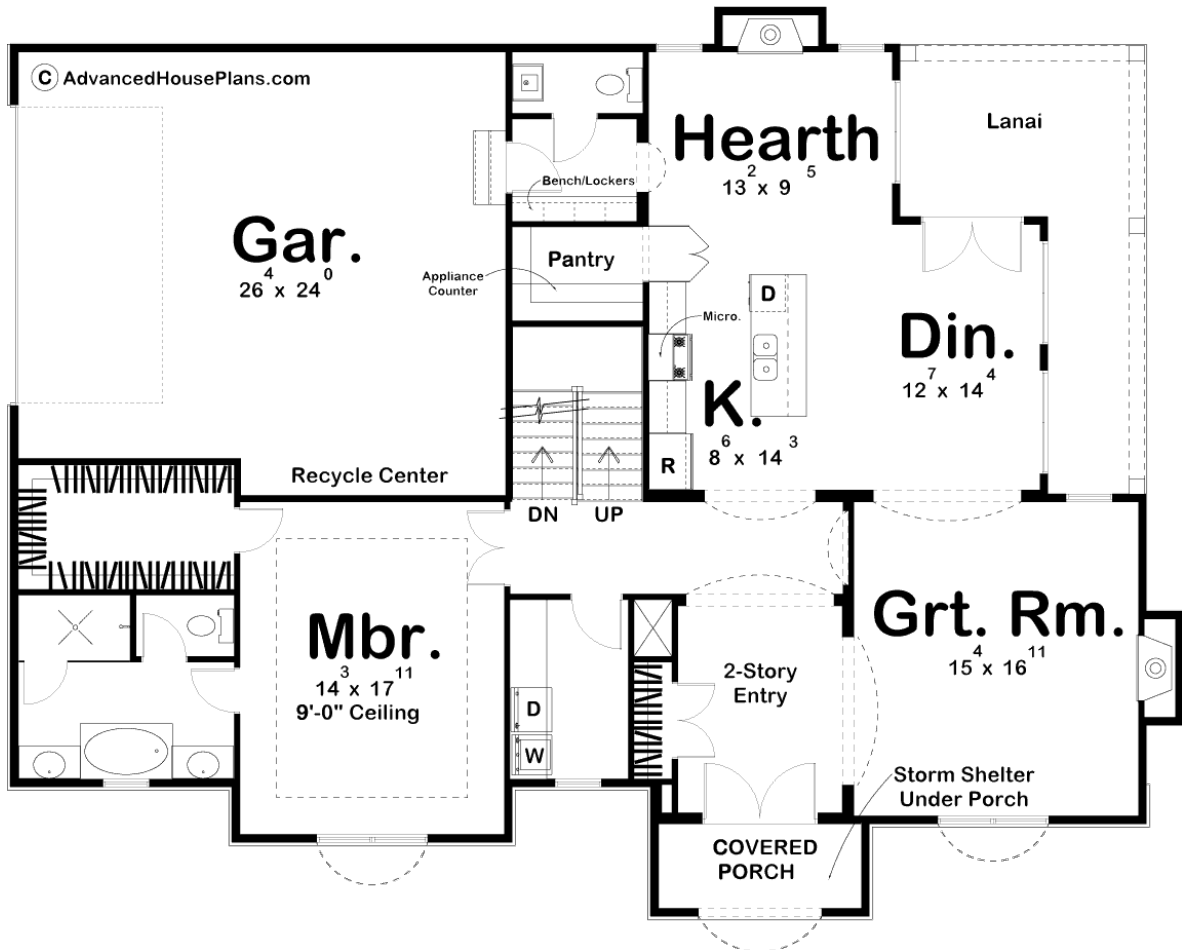
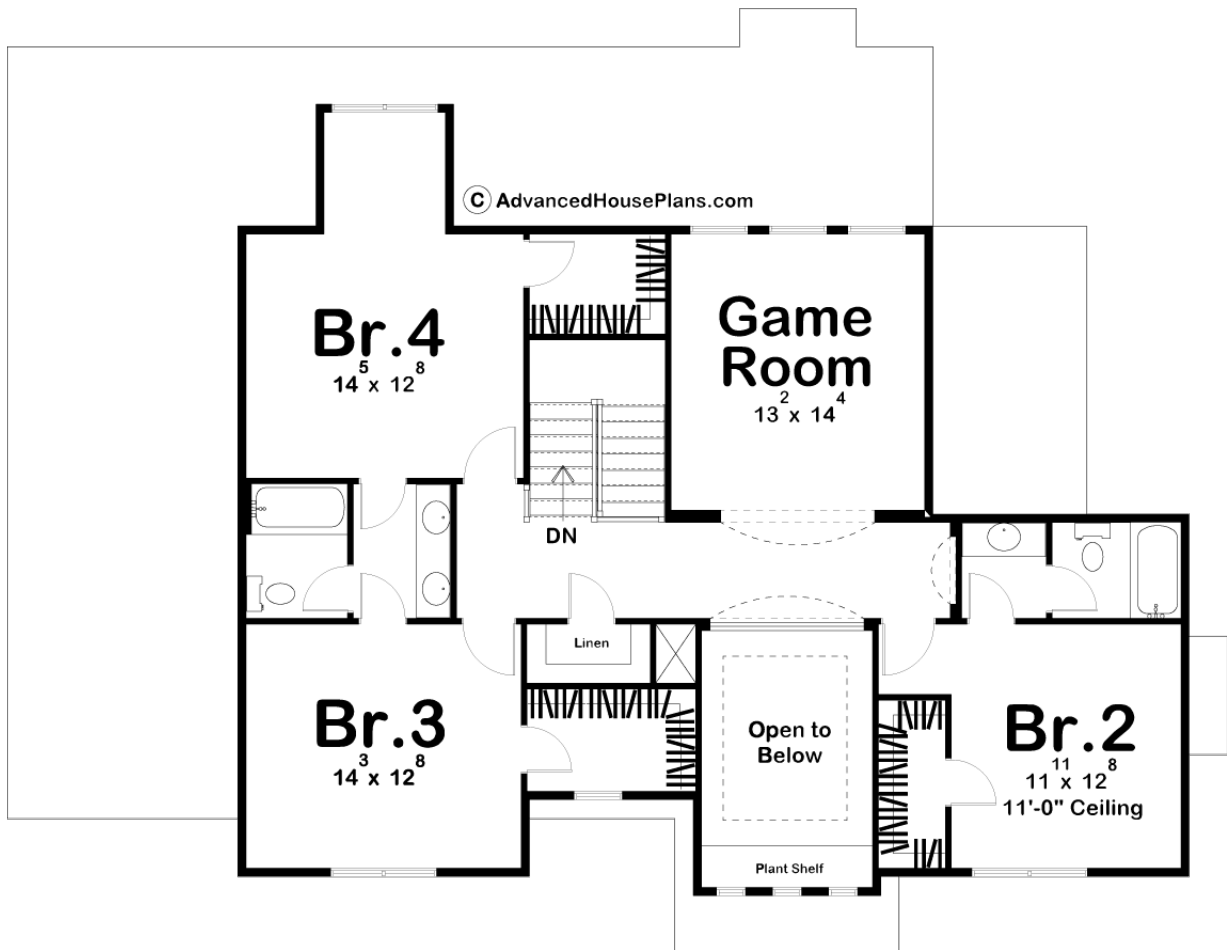




29358 - Madden Data Sheet

3009 SQ FT	4 BEDS	4 BATHS	2 BAYS	62' 0" WIDE	49' 0" DEEP
---------------	-----------	------------	-----------	----------------	----------------





Construction Specs

Layout

Bedrooms	4
Bathrooms	4
Garage Bays	2

Square Footage

Main Level	1721 Sq. Ft.
Second Level	1288 Sq. Ft.
Garage	626 Sq. Ft.
Total Finished Area	3009 Sq. Ft.

Exterior Dimensions

Width	62' 0"
Depth	49' 0"
Ridge Height	27' 0"
<i>Calculated from main floor line</i>	

Default Construction Stats

Stats are unique to the individual plan.

Foundation Type	Basement
Exterior Wall Construction	2x4
Roof Pitches	6/12 Primary
Foundation Wall Height	9'
Main Wall Height	9'
Second Wall Height	8'

Plan Description

A tasteful array of Mediterranean-style details defines the look of this spacious 1.5-story house plan. A classic, arched covered porch, with storm shelter below, grants passage to the impressive 2-story entry area. Adjacent to the entry, a great room with fireplace welcomes guests. Entertaining is easy with the open arrangement of the hearth room, kitchen and dining area with access to a wrapping lanai. The kitchen's walk-in pantry features a practical appliance counter. Practicality continues in the mudroom with its built-in bench, lockers and adjoining powder bath. Secluded from the main floor's living areas, the master suite preserves its privacy and includes a bath with his and her vanities, compartmented toilet, and walk-in closet. Upstairs, the home's floor plans bedrooms 3 and 4 include walk-in closets and share a bath. Bedroom 4 features a study alcove, brightened by plenty of outdoor light. Bedroom 2, with its own bath, is nearest to an appealing game room. Directly outside the game room's arched entrance, views from a balcony survey the entry area below. What a fantastic southern home!