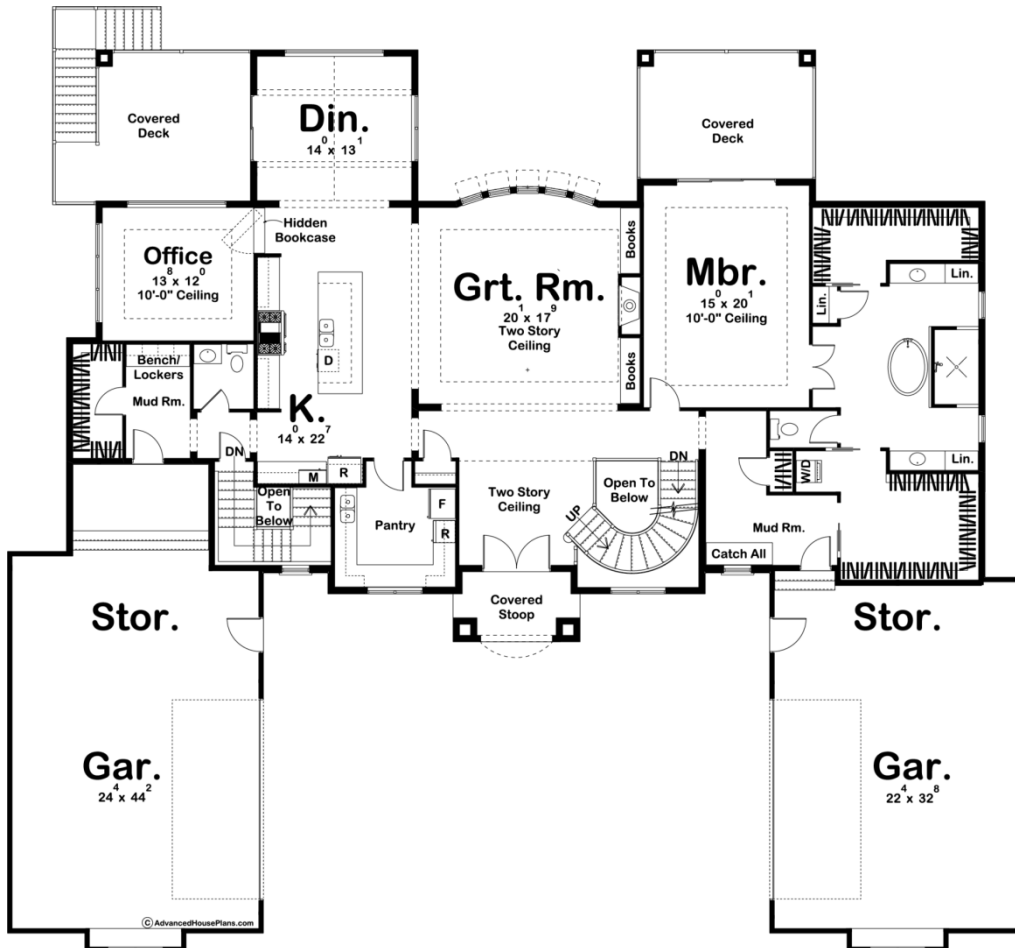
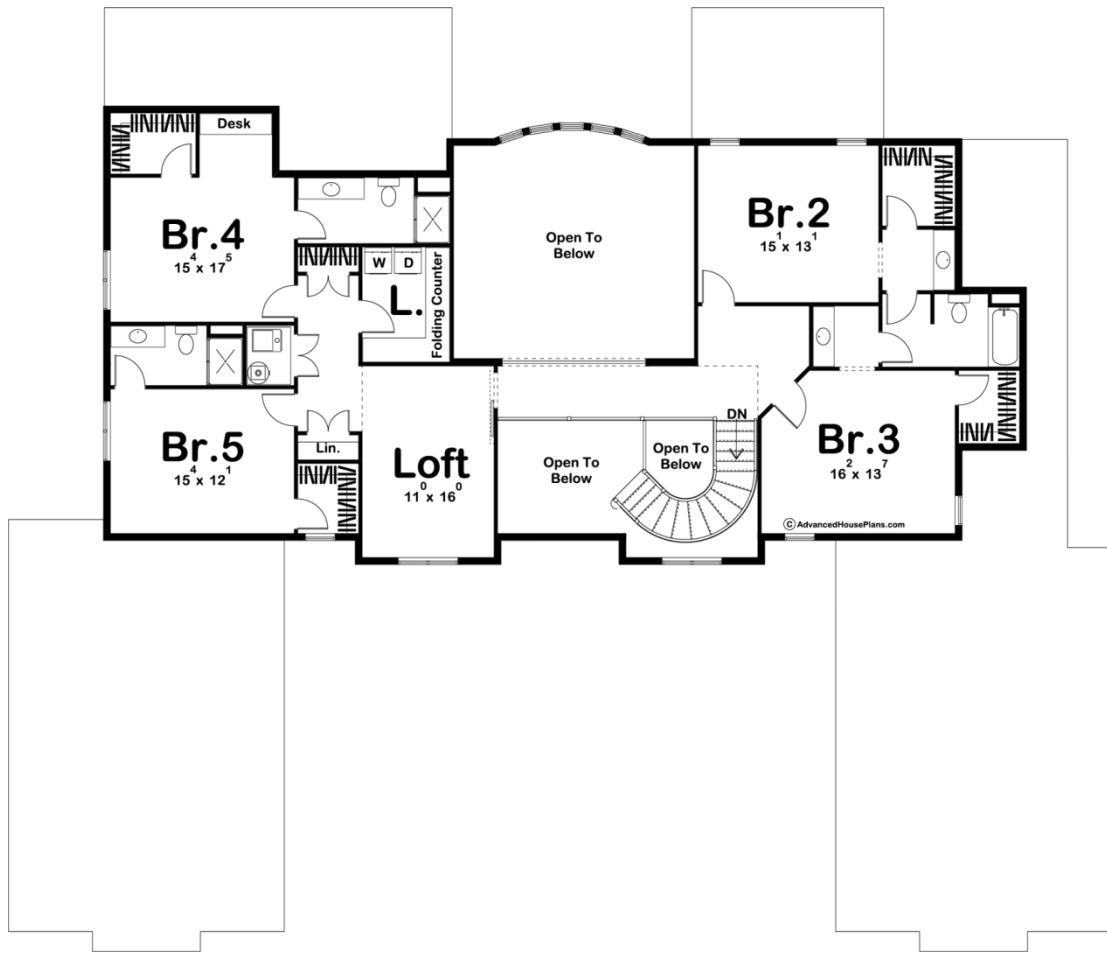




29528 - Magnolia Data Sheet

4853 SQ FT	5 BEDS	5 BATHS	4 BAYS	92' 0" WIDE	82' 0" DEEP
---------------	-----------	------------	-----------	----------------	----------------





Construction Specs

Layout

Bedrooms	5
Bathrooms	5
Garage Bays	4

Square Footage

Main Level	2924 Sq. Ft.
Second Level	1929 Sq. Ft.
Garage	1615 Sq. Ft.
Total Finished Area	4853 Sq. Ft.

Exterior Dimensions

Width	92' 0"
Depth	82' 0"
Ridge Height	32' 0"
<i>Calculated from main floor line</i>	

Default Construction Stats

Stats are unique to the individual plan.

Foundation Type	Basement
Exterior Wall Construction	2x4
Roof Pitches	6/12
Foundation Wall Height	10'
Main Wall Height	10'
Second Wall Height	8'

Plan Description

Magnolia is a luxurious house plan, exquisitely designed and full of beautiful features and elegant surprises. Every inch of this home has been thoughtfully considered - this is truly a dream home of the highest order! With Mediterranean styling from front to back, Magnolia is sure to stand out from the crowd. A sense of grandeur captivates guest within a 2-story-high entry hall that offers views into an equally lofty great room. The great room is warmed by a fireplace, flanked by built-in bookshelves, and brightened by a massive bay window. The kitchen is open to the great room and has a massive island with a breakfast bar along with an oversized walk-in pantry. Adjacent to the kitchen is a hidden bookcase door that leads to a private office. The Master Suite will blow you away with its luxurious bathroom complete with his and her vanities split by a soaking tub and walk-in shower. The bathroom is flanked by two walk-in closets. A private covered deck completes the perfect master suite. On the second level, bedrooms 2 and 3 share a Hollywood bath while bedrooms 4 and 5 each have their own bathroom. Each bedroom has its own walk-in closet.