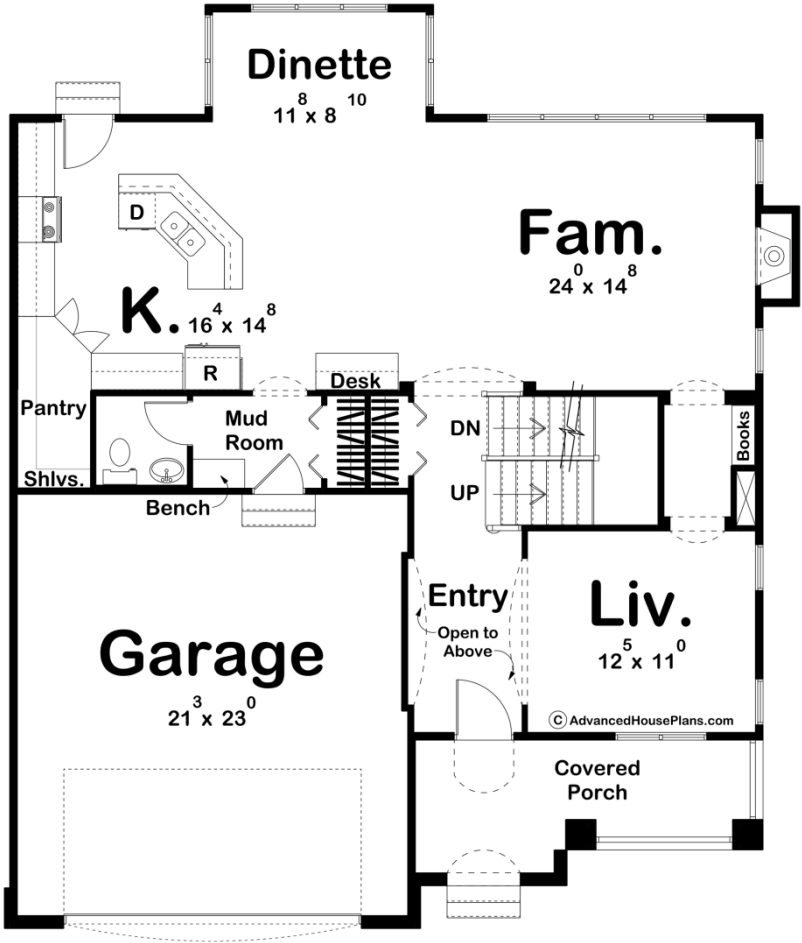
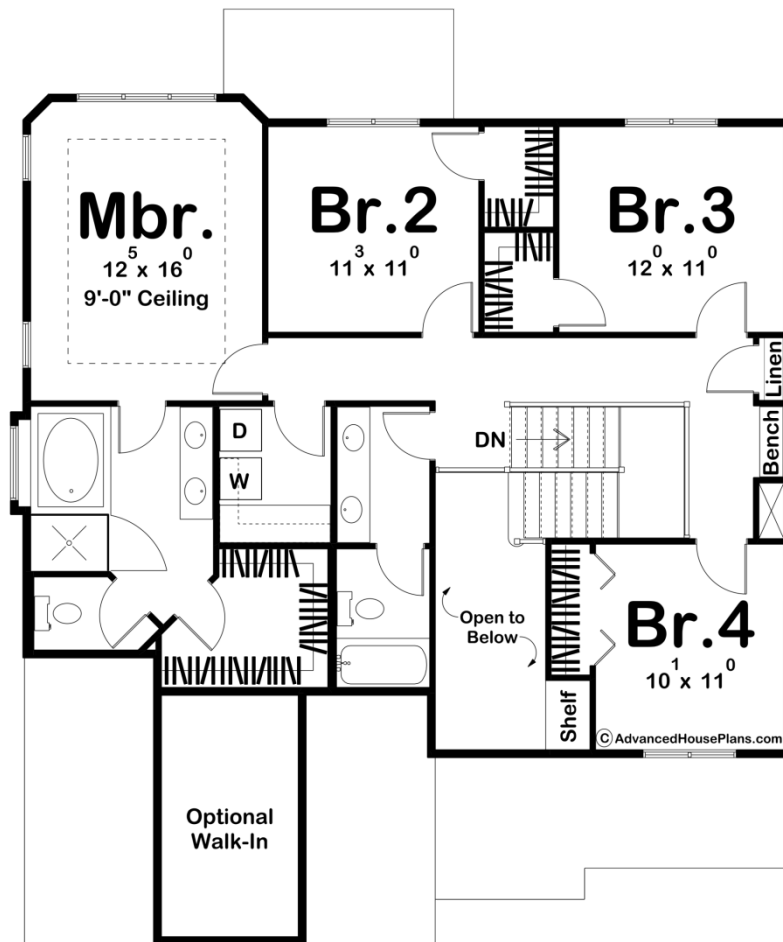




29151 - Maguire Data Sheet

2333 SQ FT	4 BEDS	3 BATHS	2 BAYS	43' 0" WIDE	50' 0" DEEP
---------------	-----------	------------	-----------	----------------	----------------





Construction Specs

Layout

Bedrooms	4
Bathrooms	3
Garage Bays	2

Square Footage

Main Level	1175 Sq. Ft.
Second Level	1158 Sq. Ft.
Garage	513 Sq. Ft.
Total Finished Area	2333 Sq. Ft.

Exterior Dimensions

Width	43' 0"
Depth	50' 0"
Ridge Height	28' 0"
<i>Calculated from main floor line</i>	

Default Construction Stats
Stats are unique to the individual plan.

Foundation Type	Basement
Exterior Wall Construction	2x4
Roof Pitches	7/12 Primary, 12/12 Secondary
Foundation Wall Height	9'
Main Wall Height	9'
Second Wall Height	8'

Plan Description

With this design we wanted a home that was narrow, yet still had curb appeal. Inside the home we emphasize family living. A 2 story entry is what you see when you enter the home, while a open kitchen helps maintain a comfortable feel with views into the family room and breakfast nook. As you continue upstairs the second level offers 4 bedrooms and a 2nd level laundry. The master suite has a boxed ceiling and a luxury master bath with a large walk in closet.