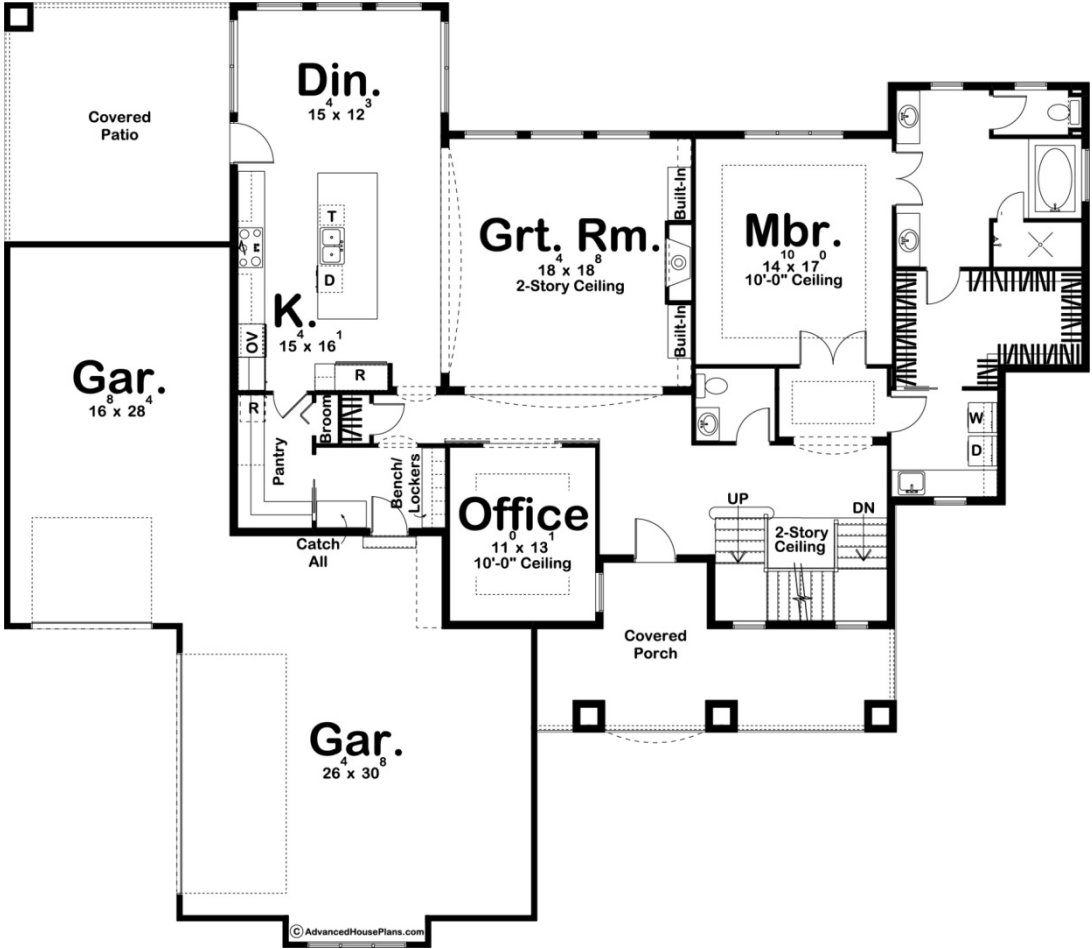
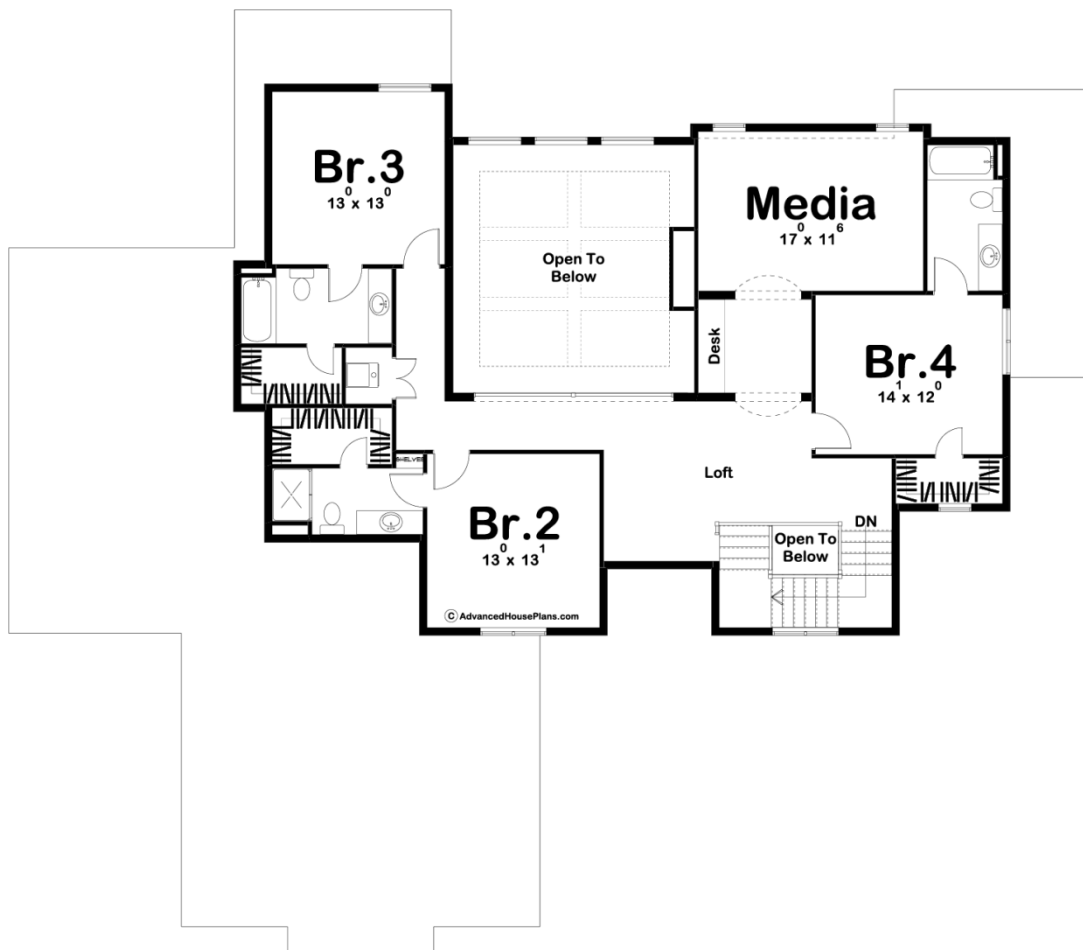




29500 - Malone Data Sheet

| | | | | | |
|---------------|-----------|------------|-----------|----------------|----------------|
| 3808 SQ FT | 4 BEDS | 5 BATHS | 3 BAYS | 81' 8" WIDE | 71' 0" DEEP |
|---------------|-----------|------------|-----------|----------------|----------------|





Construction Specs

Layout

| | |
|-------------|---|
| Bedrooms | 4 |
| Bathrooms | 5 |
| Garage Bays | 3 |

Square Footage

| | |
|---------------------|--------------|
| Main Level | 2275 Sq. Ft. |
| Second Level | 1533 Sq. Ft. |
| Garage | 1221 Sq. Ft. |
| Total Finished Area | 3808 Sq. Ft. |

Exterior Dimensions

| | |
|--|--------|
| Width | 81' 8" |
| Depth | 71' 0" |
| Ridge Height | 31' 0" |
| <i>Calculated from main floor line</i> | |

Default Construction Stats
Stats are unique to the individual plan.

| | |
|----------------------------|--------------------------------------|
| Foundation Type | Basement |
| Exterior Wall Construction | 2x4 |
| Roof Pitches | Primary 6/12, Secondary 10/12 4/12 |
| Foundation Wall Height | 9' |
| Main Wall Height | 10' |
| Second Wall Height | 8' |

Plan Description

A seemingly endless array of enticing amenities are found in this 1 1/2 story, Craftsman-style house plan. A covered front porch greets guests, who upon entering the home, are treated to views of the great room with arched entryways. The great room captivates its occupants with a soaring two-story-high ceiling and a beautiful fireplace. Adjacent to the great room is a large open kitchen with island workspace and walk-in pantry. A covered patio is accessed from the dining area for outdoor dining or simply relaxing. The main floor Master Suite features a large bathroom with his and her vanities and a massive walk-in closet with access to the laundry room. On the second level, each bedroom has its own bathroom and walk-in closet. You will also find a wonderful media room upstairs. A loft area overlooks the 2 story great room that lies under exposed beams. Back on the main level, the Malone's 3 car garage accesses the home through a convenient utility area that includes a catch-all and bench/lockers.