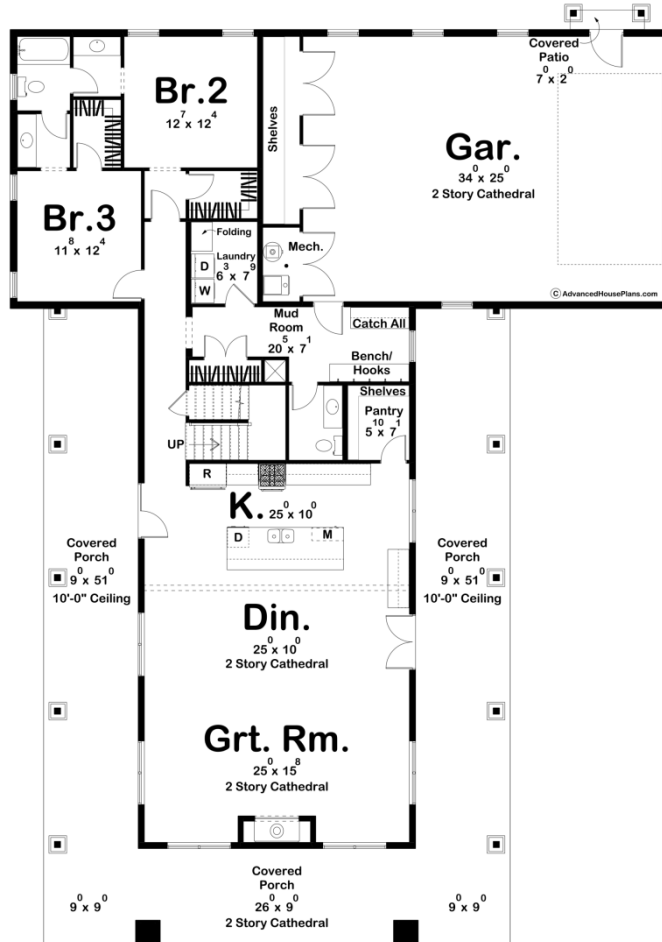
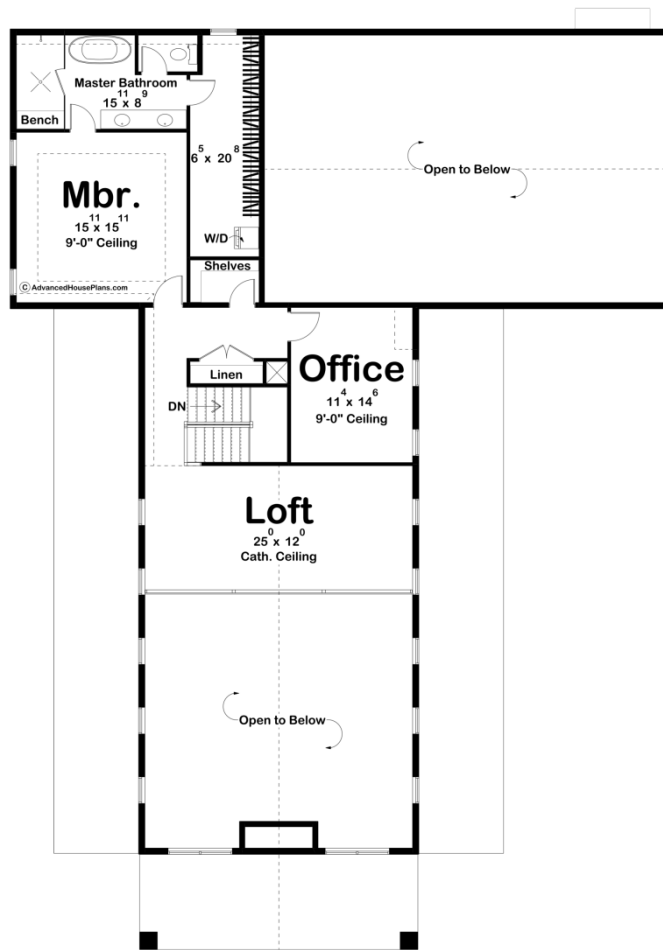




30332 - Marion Data Sheet

3192 SQ FT	3 BEDS	3 BATHS	2 BAYS	62' 0" WIDE	88' 0" DEEP
---------------	-----------	------------	-----------	----------------	----------------





Construction Specs

Layout

Bedrooms	3
Bathrooms	3
Garage Bays	2

Square Footage

Main Level	1949 Sq. Ft.
Second Level	1243 Sq. Ft.
Covered Area	1064 Sq. Ft.
Garage	990 Sq. Ft.
Total Finished Area	3192 Sq. Ft.

Exterior Dimensions

Width	62' 0"
Depth	88' 0"
Ridge Height	31' 6"
<i>Calculated from main floor line</i>	

Default Construction Stats

Stats are unique to the individual plan.

Foundation Type	Slab
Exterior Wall Construction	2x6
Roof Pitches	Primary 12/12, Secondary 4/12, 8/12
Main Wall Height	9'
Second Wall Height	8'

Plan Description

Introducing the Marion. A home filled with rustic elegance and modern convenience. This architectural marvel combines the charm of a barn-inspired exterior with a thoughtfully designed interior that embraces contemporary living. The house welcomes you with a grand and spacious covered porch on the front, adorned with a striking gable truss that evokes a sense of timeless charm. This front porch is perfect for relaxing evenings and enjoying the beauty of the surrounding landscape. But the porch doesn't stop there - it wraps around 3 sides of the house, offering multiple outdoor living spaces that invite you to enjoy the fresh air, entertain, or simply unwind. An oversized 2-car garage provides ample space for your vehicles and extra storage, keeping them protected from the elements. As you step through the front door, you enter into a dining space that seamlessly flows into the open kitchen and great room. The two-story cathedral ceiling in the great room and dining area adds a sense of grandeur and spaciousness, creating a captivating focal point for the main living area. The kitchen is a chef's dream, featuring a large island with a convenient snack bar and a walk-in pantry. This space is not just for cooking; it's a place for culinary creativity and social gatherings. The main floor also hosts two generously sized guest rooms, which share a Jack and Jill bathroom. This unique feature allows for comfortable and private accommodations for family and guests. A mudroom, laundry room, and powder bath on the main floor provide practicality and efficiency to your daily routines. As you ascend to the second floor, you'll find the master bedroom, a private retreat designed with your comfort in mind. The master bedroom includes a full ensuite bathroom and a large walk-in closet with the added convenience of a washer and dryer stack. The second floor also offers a dedicated office space, perfect for working from home or managing personal affairs. Additionally, a loft area on this level provides a versatile space for relaxation, reading, or recreational activities. Our Barndominium-style house plan combines the best of both worlds - a visually captivating exterior with a well-thought-out interior that prioritizes comfort, convenience, and modern living. With its spacious covered porches, an oversized garage, open living spaces, and a unique guest room and master suite layout, this home is the perfect blend of rustic charm and contemporary luxury. It's a place where you can create lasting memories and enjoy the beauty of the outdoors from the comfort of your own sanctuary.