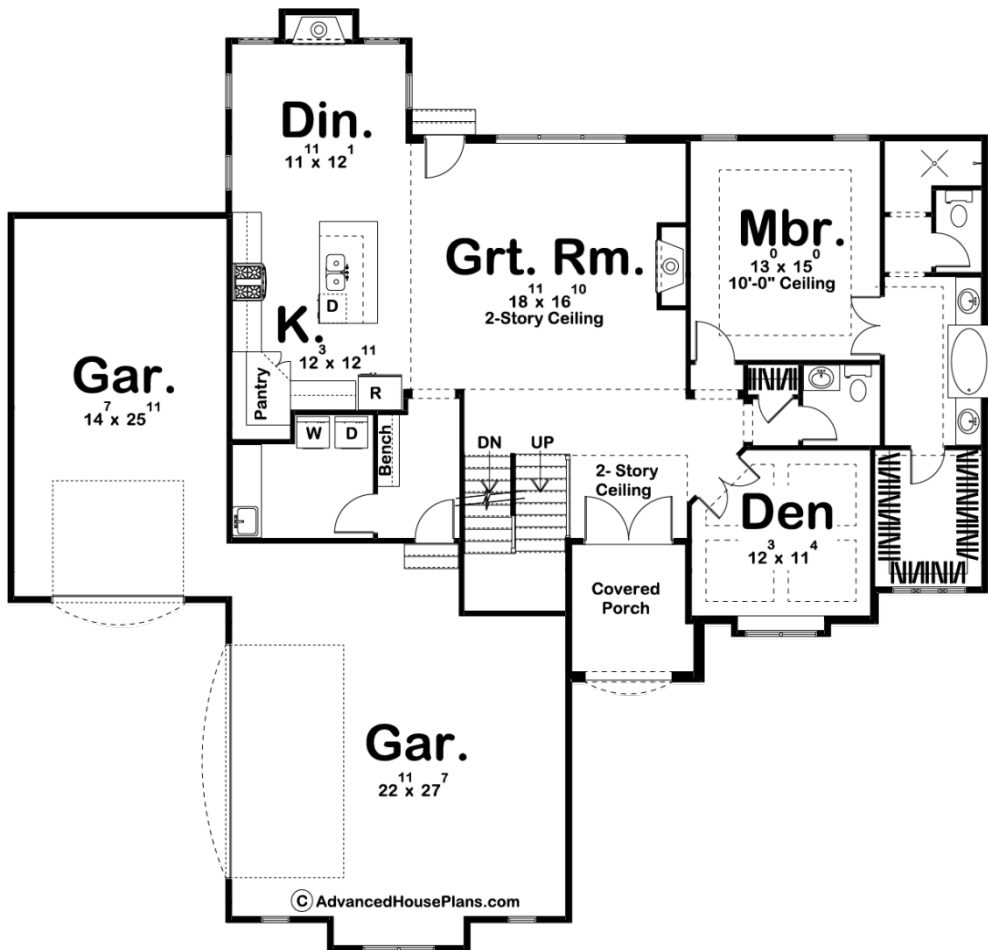
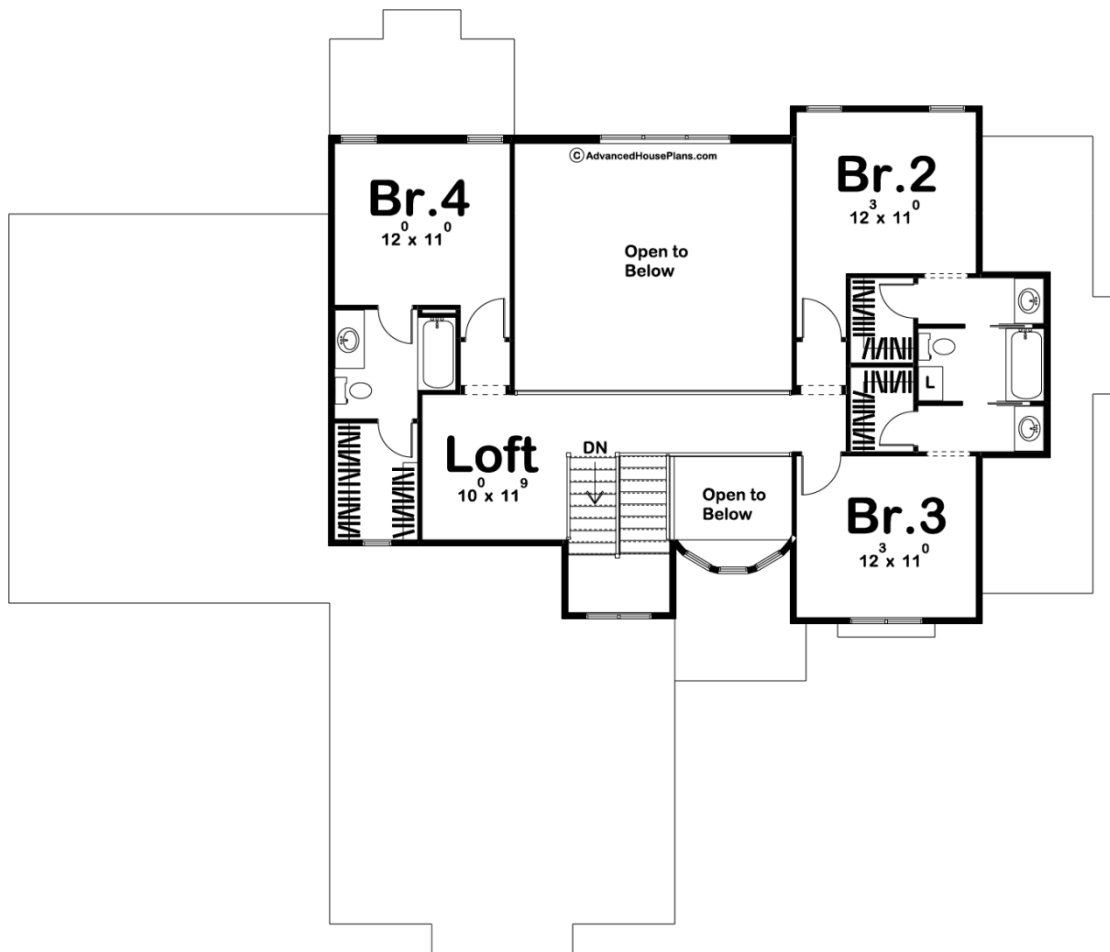




**29418 - McCarville Data Sheet**

2667 SQ FT	4 BEDS	4 BATHS	3 BAYS	68' 0" WIDE	65' 0" DEEP
---------------	-----------	------------	-----------	----------------	----------------





## Construction Specs

### Layout

Bedrooms	4
Bathrooms	4
Garage Bays	3

### Square Footage

Main Level	1687 Sq. Ft.
Second Level	980 Sq. Ft.
Garage	991 Sq. Ft.
Total Finished Area	2667 Sq. Ft.

### Exterior Dimensions

Width	68' 0"
Depth	65' 0"
Ridge Height	29' 0"
<i>Calculated from main floor line</i>	

### Default Construction Stats

*Stats are unique to the individual plan.*

Foundation Type	Basement
Exterior Wall Construction	2x4
Roof Pitches	Primary 6/12
Foundation Wall Height	9'
Main Wall Height	10'
Second Wall Height	8'

## Plan Description

This beautiful Mediterranean 1-1/2 story house plan is detailed with thinset stone, stucco, wood brackets and a rounded turret. A sense of grandeur captivates guest within a 2-story-high entry hall that offers views through openings into an equally lofty great room. The great room is warmed by a fireplace, and brightened by a trio of windows. The breakfast area, which along with the kitchen, is open to the great room and is flooded with natural light and is highlighted by its own fireplace. The kitchen features ample counter space, an island workspace/breakfast bar, and a walk-in pantry. Just steps away from the kitchen lies a utility area that includes the laundry room and bench and lockers. This area conveniently acts as a buffer between the living areas of the home and the 3-car garage. On the opposite side of the home, the secluded master suite sits only steps away from a stately den. Double doors open to a pampering bath area that includes an elegant oval soaking tub, walk-in shower, compartmented toilet and sizeable walk-in closet. Upstairs, each of the three secondary bedrooms has a walk-in closet. Bedrooms 2 and 3 share a Jack-n-Jill bath and bedroom 4 has a private bath. A loft area offers views to the great room and entry hall below.