

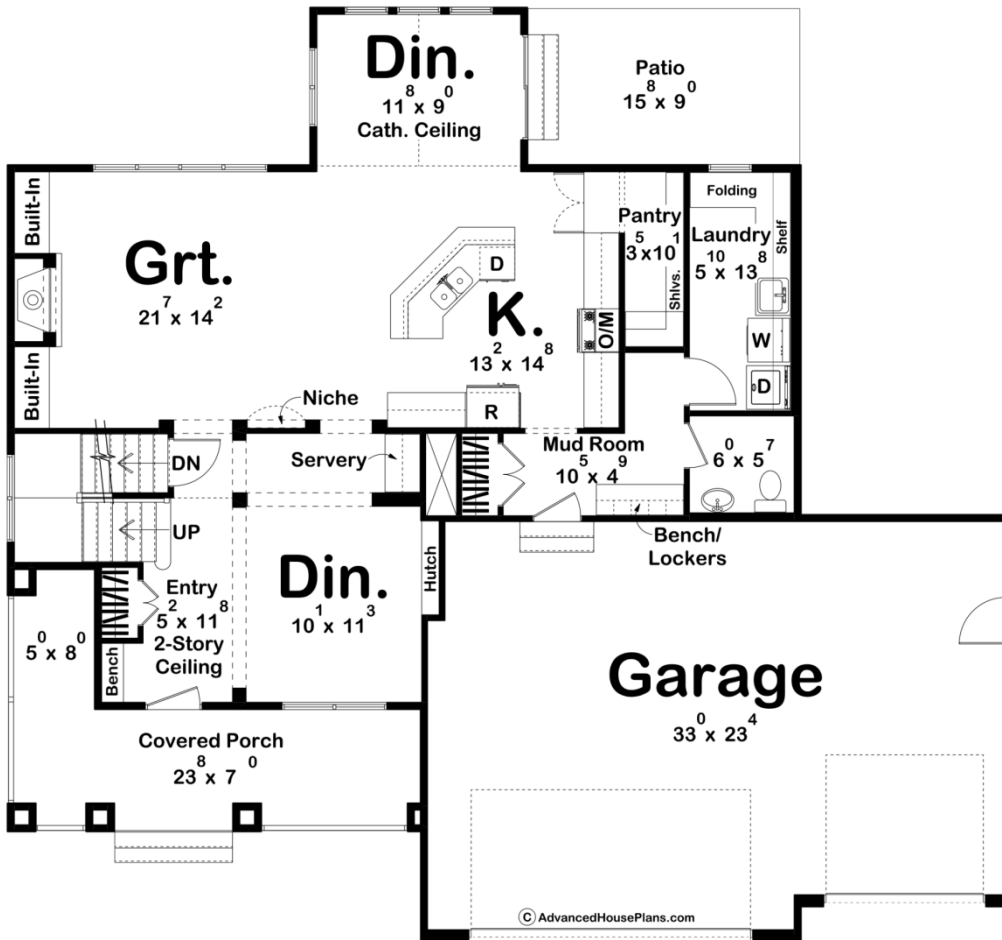
ADVANCED

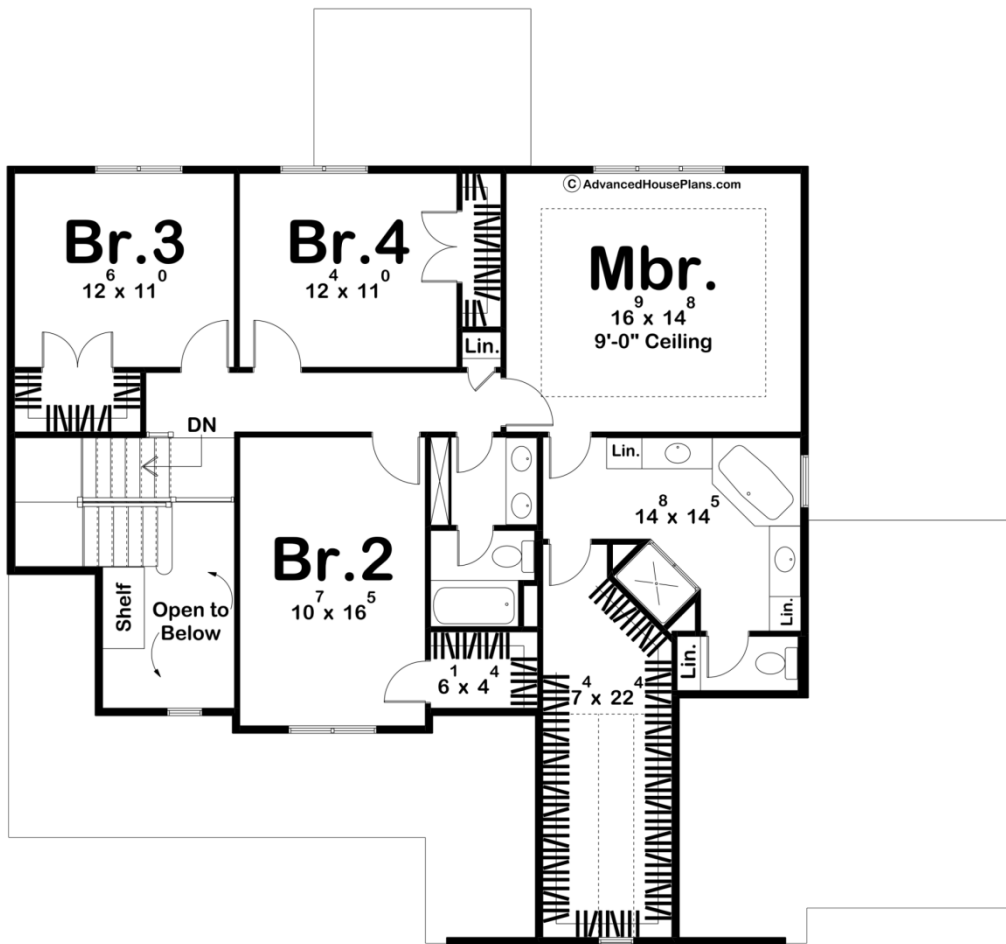
HOUSE PLANS



29030 - McKinley Data Sheet

2580 SQ FT	4 BEDS	3 BATHS	3 BAYS	58' 0" WIDE	53' 0" DEEP
---------------	-----------	------------	-----------	----------------	----------------





Construction Specs

Layout

Bedrooms	4
Bathrooms	3
Garage Bays	3

Square Footage

Main Level	1255 Sq. Ft.
Second Level	1325 Sq. Ft.
Garage	767 Sq. Ft.
Total Finished Area	2580 Sq. Ft.

Exterior Dimensions

Width	58' 0"
Depth	53' 0"
Ridge Height	28' 0"
<i>Calculated from main floor line</i>	

Default Construction Stats

Stats are unique to the individual plan.

Foundation Type	Basement
Exterior Wall Construction	2x4
Roof Pitches	7/12 Primary, 10/12 Secondary
Foundation Wall Height	9'
Main Wall Height	9'
Second Wall Height	8'

Plan Description

A large front covered porch welcomes you to this beautiful traditional style house. Immediately inside the house you will find a formal dining room with a built in hutch. The amazing great room is warmed by a fireplace that is flanked by built-in bookshelves. The large kitchen comes complete with a large island with a breakfast bar and a huge walk-in pantry. The well lit breakfast nook has a cathedral ceiling and provides great views of the back yard. Upstairs you will find all 4 bedrooms. The fantastic master suite includes a bathroom with his/her vanities, a corner soaking tub, an enclosed toilet and a massive walk-in closet. Bedrooms 2 and 3 each have their own walk-in closet and all three bedrooms share a centrally located bathroom in the hallway. Back on the main floor, the large 3 car garage enters the home through a convenient mud room and also leads to a large laundry room with a soaking sink and a large folding counter.