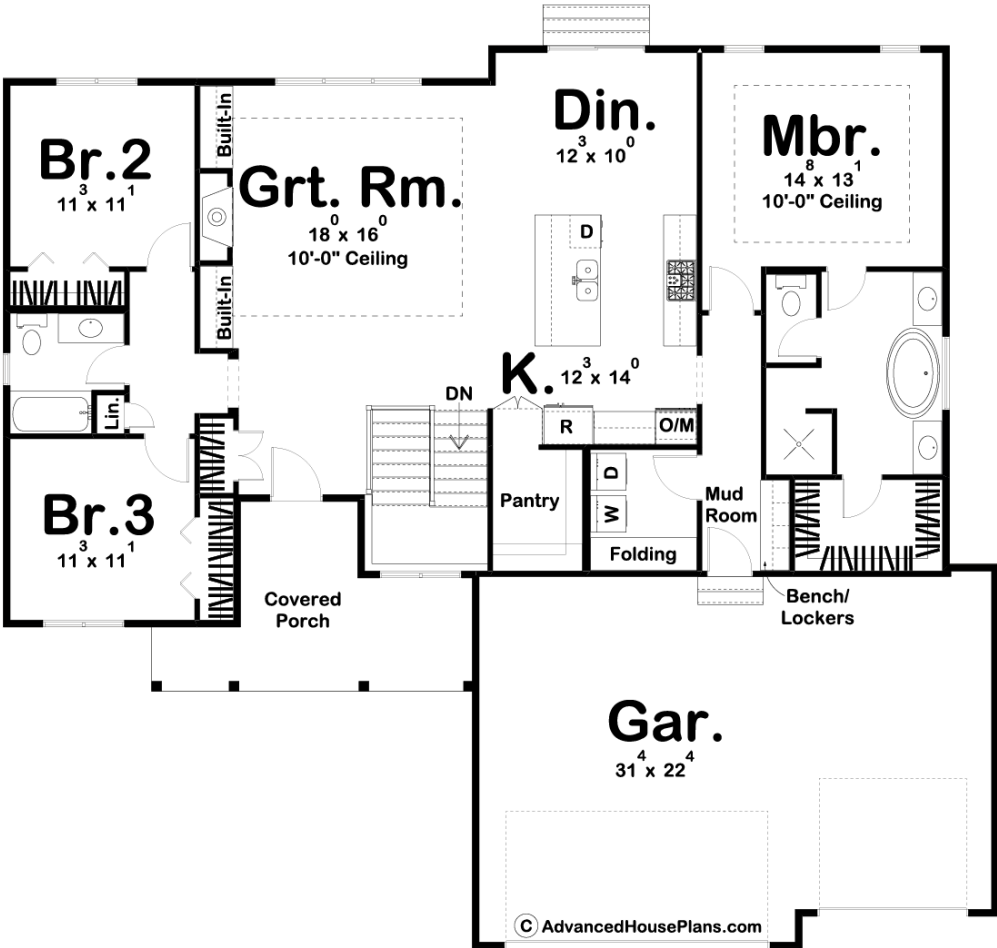




29767 - Meadow View Data Sheet

1824 SQ FT	3 BEDS	2 BATHS	3 BAYS	60' 8" WIDE	55' 0" DEEP
---------------	-----------	------------	-----------	----------------	----------------



Construction Specs

Layout

Bedrooms

Bathrooms	2
Garage Bays	3
Square Footage	
Main Level	1824 Sq. Ft.
Total Finished Area	1824 Sq. Ft.
Exterior Dimensions	
Width	60' 8"
Depth	55' 0"
Default Construction Stats <i>Stats are unique to the individual plan.</i>	
Foundation Type	Basement
Exterior Wall Construction	2x4
Roof Pitches	8/12 Primary, 4/12 10/12 Secondary
Foundation Wall Height	9'
Main Wall Height	9'

Plan Description

Featuring a beautiful modern farmhouse exterior facade, the Meadow View is a charming 1 story house plan with a great floor plan to match! The Meadow View features an open floor plan that feels huge! It's got a deep walk-in pantry, hidden by cabinet-faced doors, and tons of space in the mudroom to keep your life, and this beautiful home, organized. The great room is warmed by a fireplace that is flanked by built-in bookshelves. On the right side of the home, the master suite is generously sized with a shower and spa tub and a spacious walk-in closet. On the opposite side of the home, bedrooms 2 and 3 share a centrally located hall bathroom.