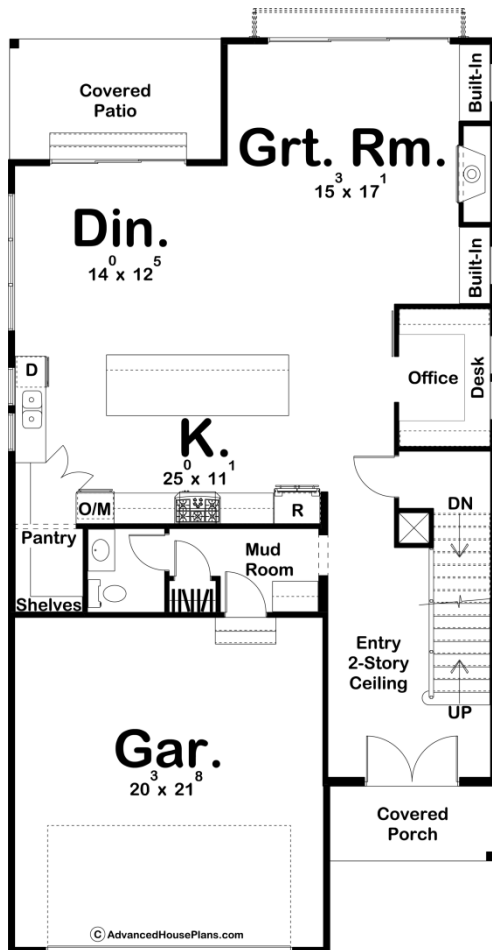


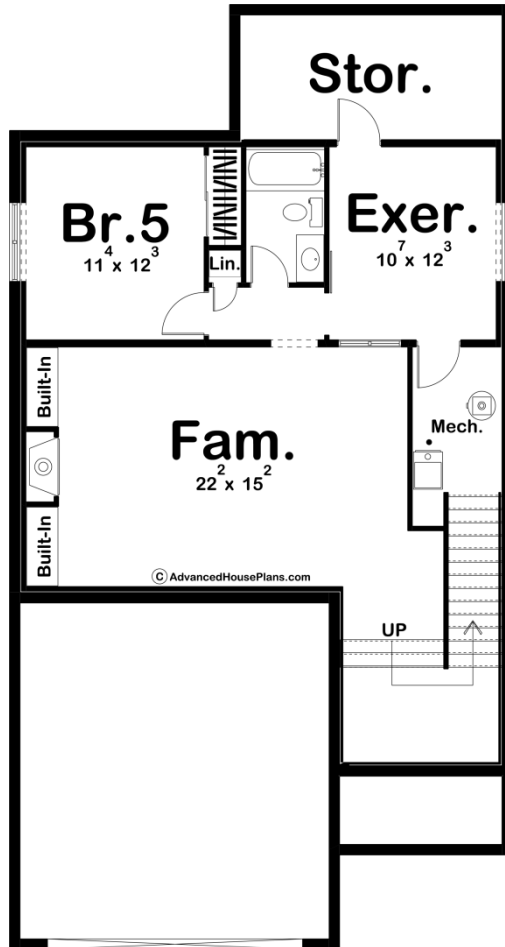
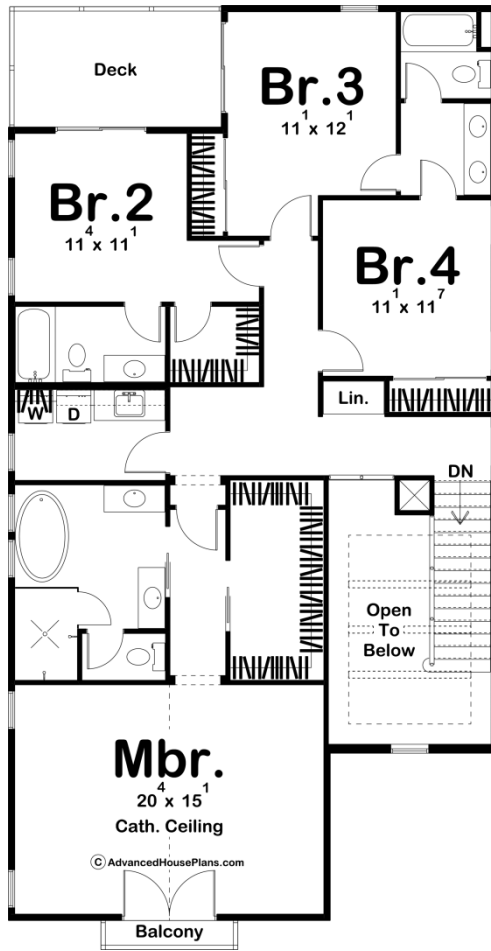
ADVANCED
HOUSE PLANS



29844 - Mission Bay Data Sheet

2731 SQ FT	4 BEDS	4 BATHS	2 BAYS	32' 0" WIDE	60' 0" DEEP
---------------	-----------	------------	-----------	----------------	----------------





Construction Specs

Layout

Bedrooms	4
Bathrooms	4
Garage Bays	2

Square Footage

Main Level	1229 Sq. Ft.
Second Level	1502 Sq. Ft.
Garage	457 Sq. Ft.
Total Finished Area	2731 Sq. Ft.

Exterior Dimensions

Width	32' 0"
Depth	60' 0"
Ridge Height <i>Calculated from main floor line</i>	33' 0"

Default Construction Stats

Stats are unique to the individual plan.

Foundation Type	Basement
Exterior Wall Construction	2x4
Roof Pitches	10/12 Primary, 6/12 Secondary
Foundation Wall Height	9'
Main Wall Height	9'
Second Wall Height	8'

Plan Description

The Mission Bay plan is an amazing modern farmhouse that packs a ton of features into a narrow footprint that can fit on most lots. The exterior mixes the traditional modern farmhouse style with ultra-modern contrasting siding. Inside the home, you'll find yourself in a well thought out floor plan. On the main level the kitchen, dining room, and great room flow together seamlessly in an open layout. The kitchen includes a large island and a walk-in pantry. The great room is warmed by a fireplace that is flanked by built-in bookshelves. Large sliding glass doors lead to the rear of the home through the dining and great room. Also on the main floor is an amazing pocket office with a built-in desk. Upstairs, there are 4 bedrooms. The master suite lies under a cathedral ceiling and has access to a balcony through a set of french doors. The master bathroom includes his/her vanities, a soaking tub, a walk-in shower, and an enclosed toilet. Bedroom 2 has access to its own bathroom while bedroom 3 and 4 share a bathroom.