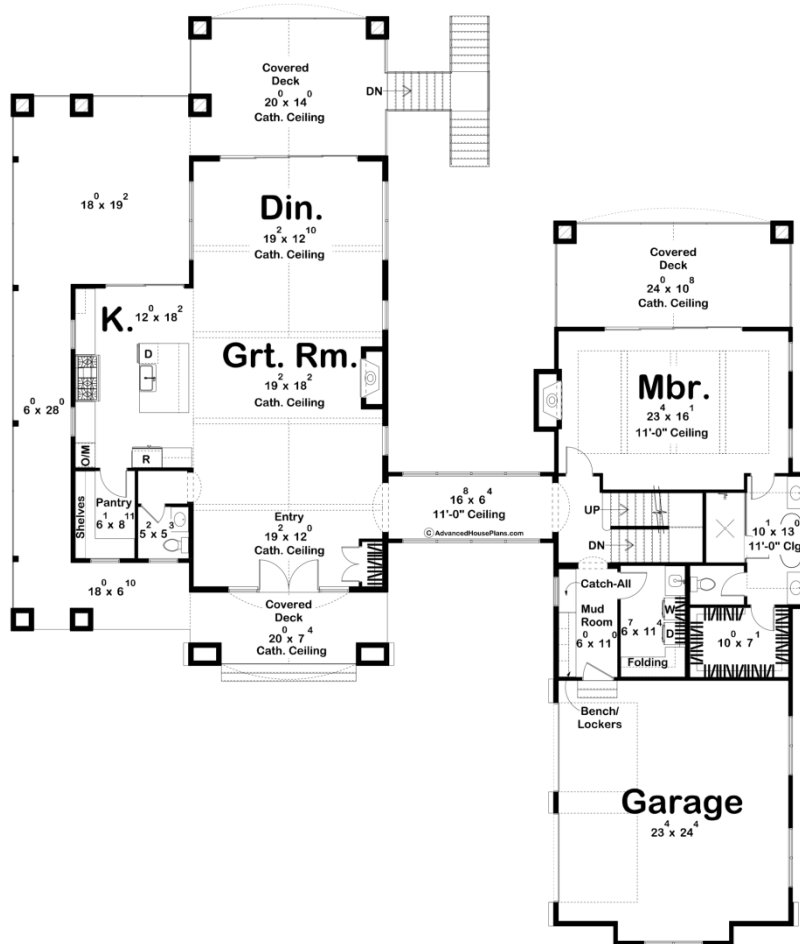
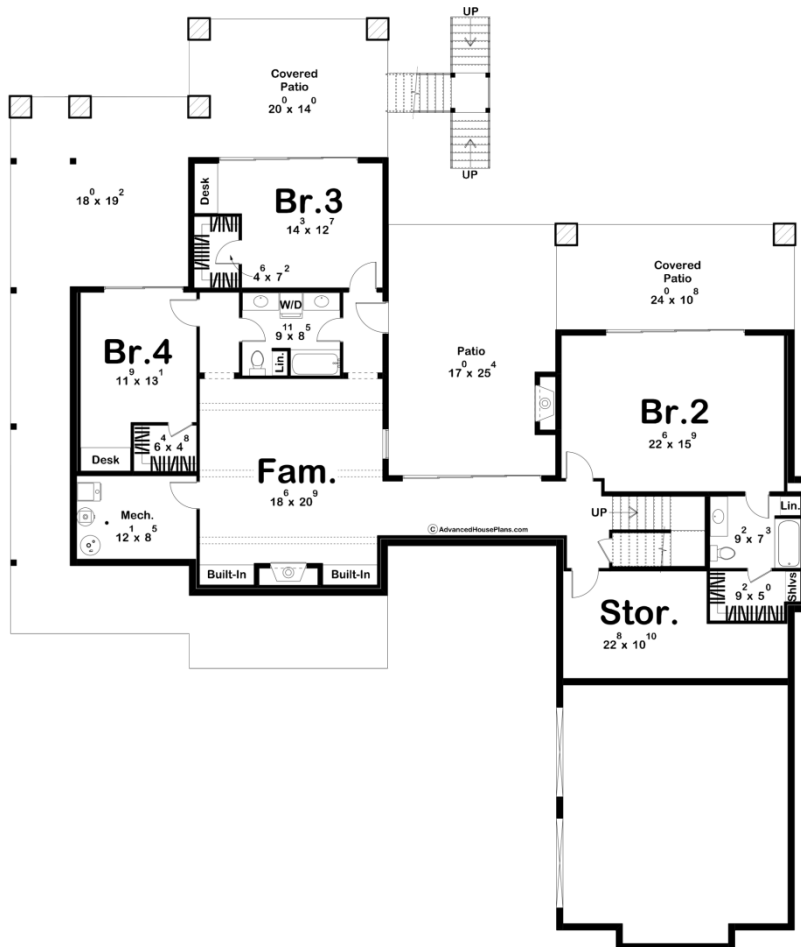
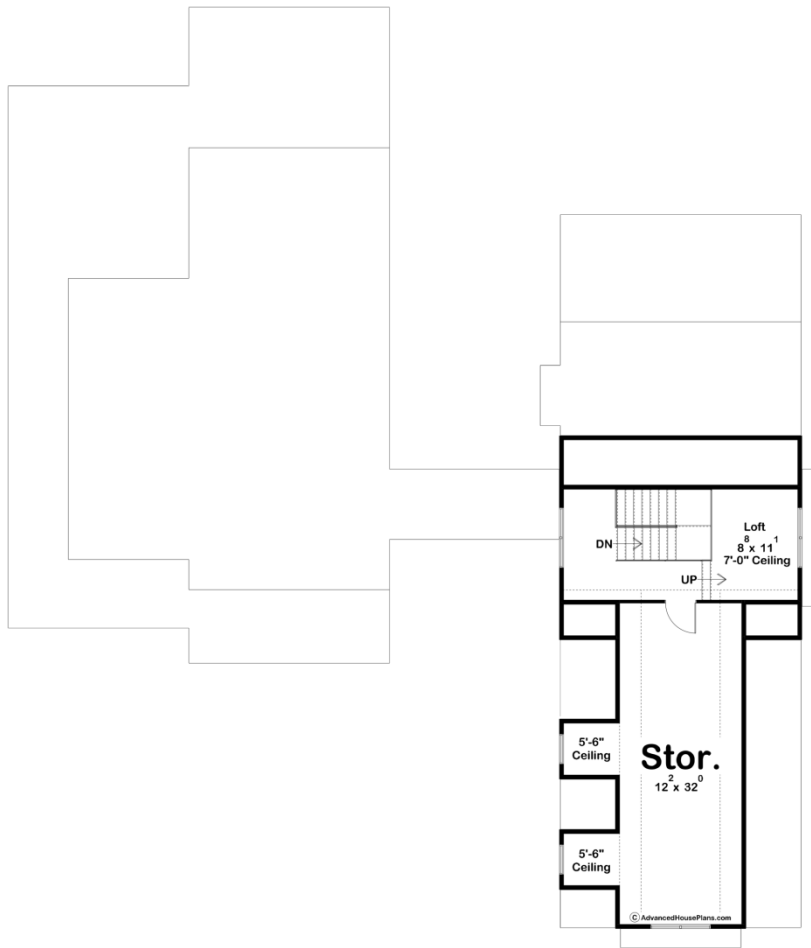




30515 - Moraine Valley Data Sheet

2494 SQ FT	1 BEDS	2 BATHS	2 BAYS	80' 8" WIDE	93' 8" DEEP
---------------	-----------	------------	-----------	----------------	----------------





Construction Specs

Layout

Bedrooms	1
Bathrooms	2
Garage Bays	2

Square Footage

Main Level	2214 Sq. Ft.
Second Level	280 Sq. Ft.
Covered Area	1319 Sq. Ft.
Garage	592 Sq. Ft.
Total Finished Area	2494 Sq. Ft.

Exterior Dimensions

Width	80' 8"
Depth	93' 8"
Ridge Height <i>Calculated from main floor line</i>	25' 0"

Default Construction Stats

Stats are unique to the individual plan.

Foundation Type	Walkout
Exterior Wall Construction	2x4
Roof Pitches	Primary 12/12, Secondary 14/12, 9/12/ 7/12, 5/12, Curved
Foundation Wall Height	10'
Main Wall Height	10'
Second Wall Height	8'

Plan Description

This European-style home, Moraine Valley, spans 2,872 square feet of refined elegance. From its captivating curb appeal to the luxurious interior, every detail is crafted to impress. Enter through the two-car garage or the wrap-around covered deck and step into a home designed for both comfort and style. The garage leads to a mudroom with built-in lockers, a bench, and a catch-all station for effortless organization. Nearby, a spacious laundry room adds functionality to the design. At the heart of the home, soaring cathedral ceilings highlight the open-concept entryway, great room, kitchen, and dining area. The great room features a cozy fireplace, while the kitchen dazzles with a large island bar and walk-in pantry. A breezeway with panoramic views connects to the master suite, complete with a private covered deck. The ensuite bathroom offers a spa-like retreat, with a soaking tub, double vanity, separate shower, and spacious walk-in closet. For even more space, the optional unfinished basement adds 2,265 square feet, featuring three additional bedrooms, two bathrooms, and a versatile family room. Moraine Valley perfectly

balances timeless European charm with modern luxury.