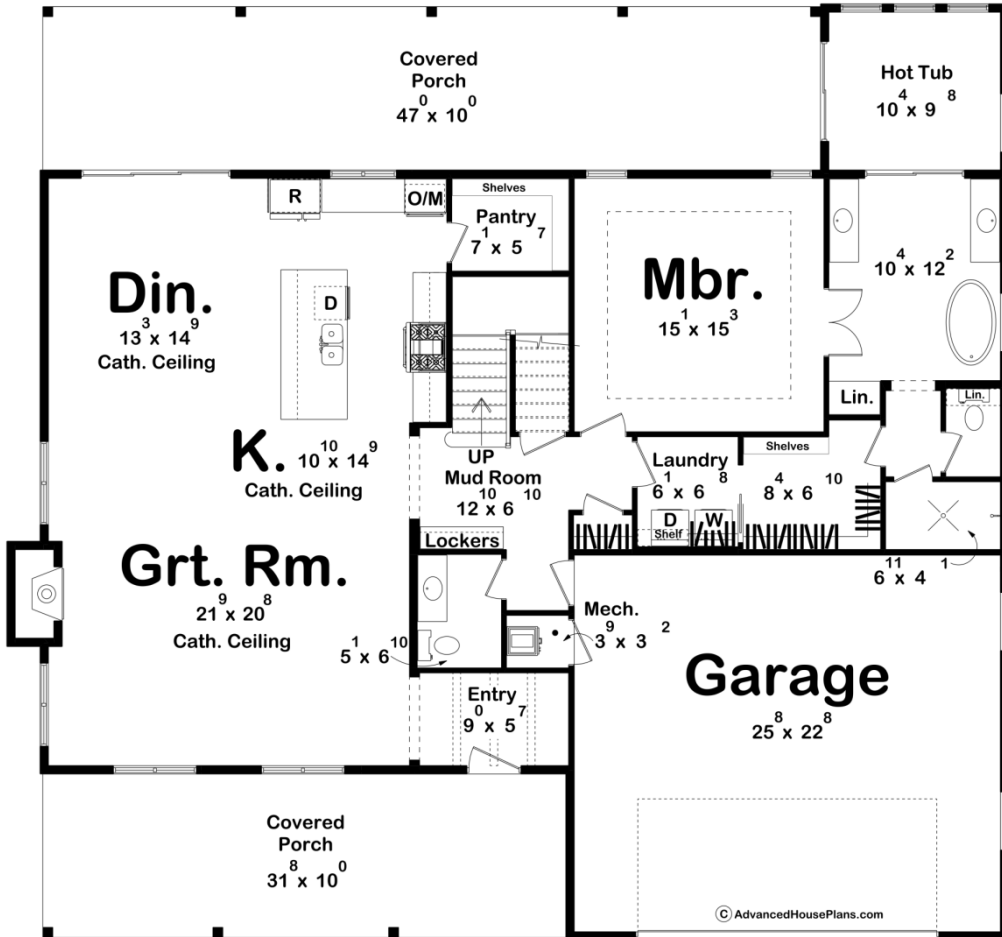
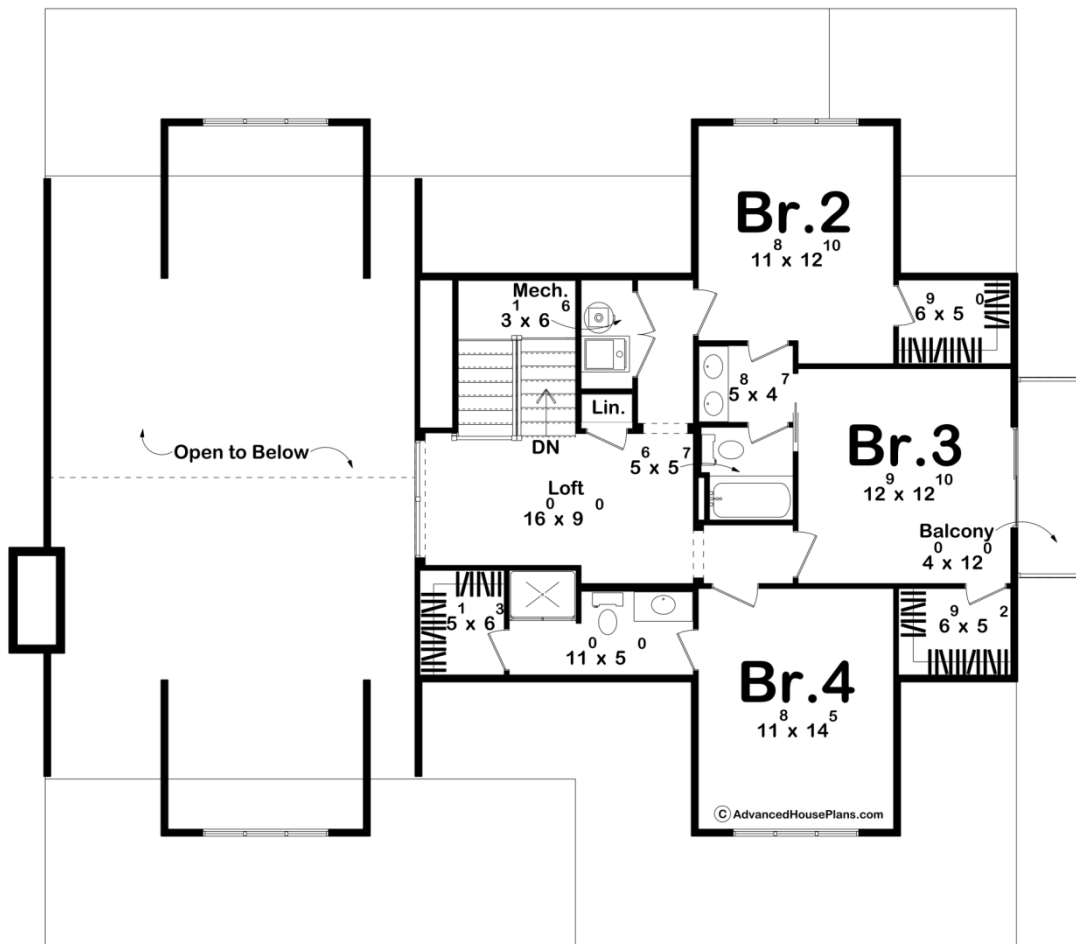




30583 - Moylan Data Sheet

2852 SQ FT	4 BEDS	4 BATHS	2 BAYS	60' 0" WIDE	56' 0" DEEP
---------------	-----------	------------	-----------	----------------	----------------





Construction Specs

Layout

Bedrooms	4
Bathrooms	4
Garage Bays	2

Square Footage

Main Level	1841 Sq. Ft.
Second Level	1011 Sq. Ft.
Covered Area	790 Sq. Ft.
Garage	598 Sq. Ft.
Total Finished Area	2852 Sq. Ft.

Exterior Dimensions

Width	60' 0"
Depth	56' 0"
Ridge Height	29' 2"
<i>Calculated from main floor line</i>	

Default Construction Stats

Stats are unique to the individual plan.

Foundation Type	Slab
Exterior Wall Construction	2x4
Roof Pitches	Primary 10/12, Secondary 8/12, 5/12
Main Wall Height	9'
Second Wall Height	8'

Plan Description

Step into the Moylan, a stunning 4-bedroom, 4-bath farmhouse-style home. From its expansive covered porches in the front and rear to its charming balcony, this home invites you to savor the great outdoors. The master suite is a true retreat, with a luxurious bathroom that connects directly to a private hot tub area for ultimate relaxation. The open-concept living area is bathed in natural light, featuring a two-story cathedral ceiling and a cozy fireplace in the great room. The main floor also includes a practical laundry room and a mudroom, keeping your day-to-day life effortlessly organized. The Moylan blends timeless farmhouse charm with thoughtful design, creating a home that's as functional as it is beautiful.