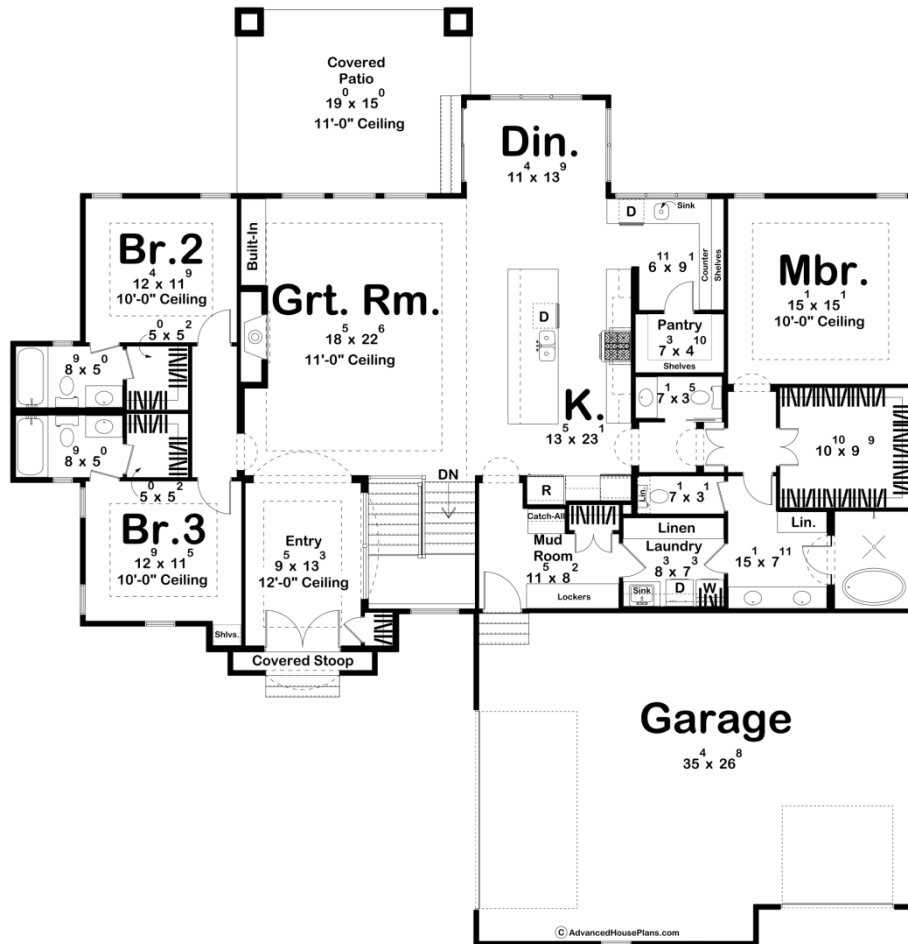




**30478 - Neyland Data Sheet**

2529 SQ FT	3 BEDS	4 BATHS	3 BAYS	73' 8" WIDE	76' 0" DEEP
---------------	-----------	------------	-----------	----------------	----------------



**Construction Specs**

**Layout**

Bedrooms

Bathrooms	4
Garage Bays	3

### Square Footage

Main Level	2529 Sq. Ft.
Covered Area	304 Sq. Ft.
Garage	933 Sq. Ft.
Total Finished Area	2529 Sq. Ft.

### Exterior Dimensions

Width	73' 8"
Depth	76' 0"
Ridge Height <i>Calculated from main floor line</i>	24' 2"

### Default Construction Stats

*Stats are unique to the individual plan.*

Foundation Type	Basement
Exterior Wall Construction	2x4
Roof Pitches	Primary 10/12, Secondary 14/12, 6/12
Foundation Wall Height	9'
Main Wall Height	9'

## Plan Description

Introducing the Neyland, a stylish one-story modern cottage home with three bedrooms and four bathrooms. Enjoy a cozy fireplace and tray ceiling in the great room, complemented by large windows. The kitchen features a spacious island and ample counter space. The master bedroom includes a large walk-in closet, and there's a convenient designated laundry room. Step outside to a covered patio perfect for relaxing. Plus, the three-car garage offers plenty of storage. The Neyland combines elegance and functionality for modern living.