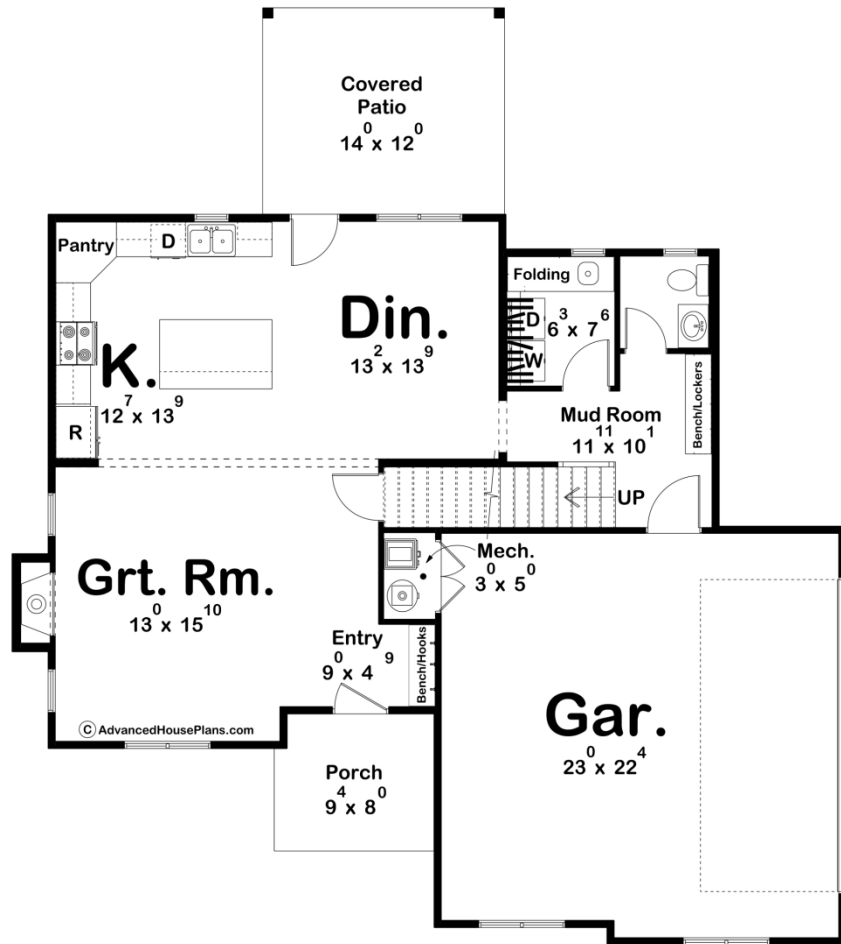
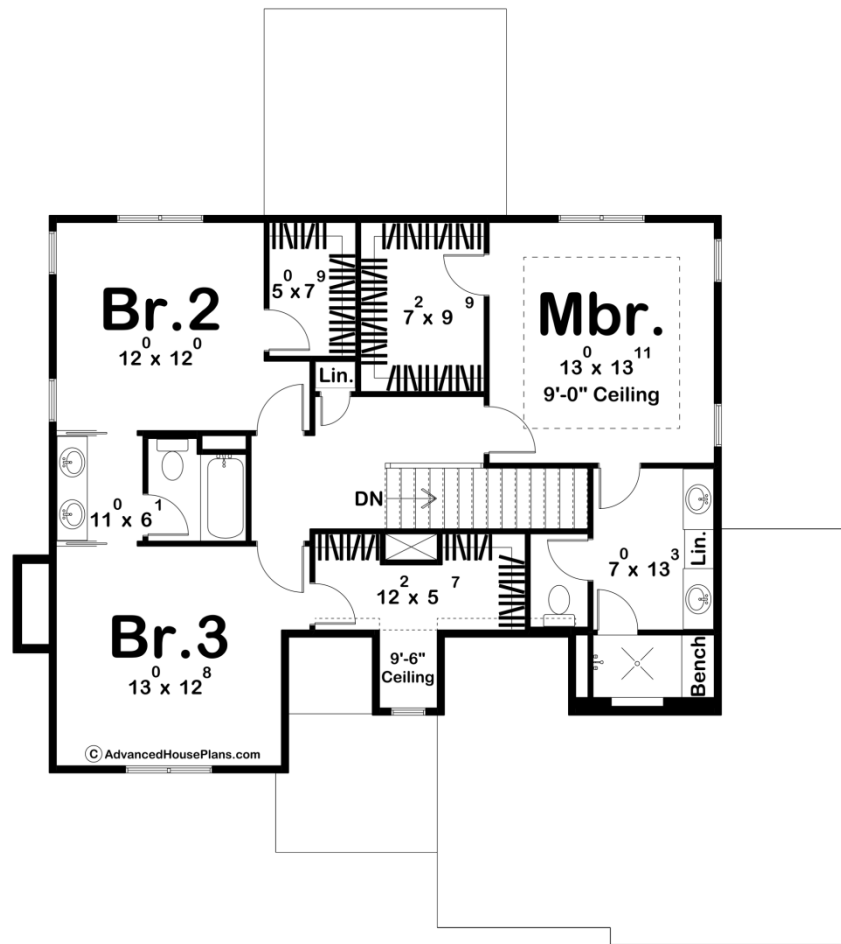




30606 - Noblewood Data Sheet

1985 SQ FT	3 BEDS	3 BATHS	2 BAYS	48' 0" WIDE	54' 0" DEEP
---------------	-----------	------------	-----------	----------------	----------------





Construction Specs

Layout

Bedrooms	3
Bathrooms	3
Garage Bays	2

Square Footage

Main Level	932 Sq. Ft.
Second Level	1053 Sq. Ft.
Covered Area	241 Sq. Ft.
Garage	548 Sq. Ft.
Total Finished Area	1985 Sq. Ft.

Exterior Dimensions

Width	48' 0"
Depth	54' 0"
Ridge Height	29' 0"
<i>Calculated from main floor line</i>	

Default Construction Stats

Stats are unique to the individual plan.

Foundation Type	Slab
Exterior Wall Construction	2x4
Roof Pitches	Primary 10/12, Secondary 14/12, curved
Main Wall Height	9'
Second Wall Height	8'

Plan Description

This charming two-story Tudor-style home combines timeless elegance with practical design. The exterior showcases steeply pitched roofs, stucco siding, and intricate wood trim details, while curved elements such as arched doorways enhance its storybook appeal. On the main floor, a cozy living space invites relaxation, complemented by a thoughtfully designed kitchen with modern appliances, ample counter space, and an island that serves as a focal point. Adjacent to the kitchen, a small dining area is perfectly positioned near a large window, creating a bright and inviting spot for meals. Upstairs, the layout includes three bedrooms, with the highlight being the luxurious master suite. The master features a spacious walk-in closet and an ensuite bathroom with dual vanities and a walk-in shower, offering both style and convenience. The two additional bedrooms are well-sized and share easy access to a second bathroom. This home's blend of classic charm and functional living spaces makes it a perfect retreat for modern family life.