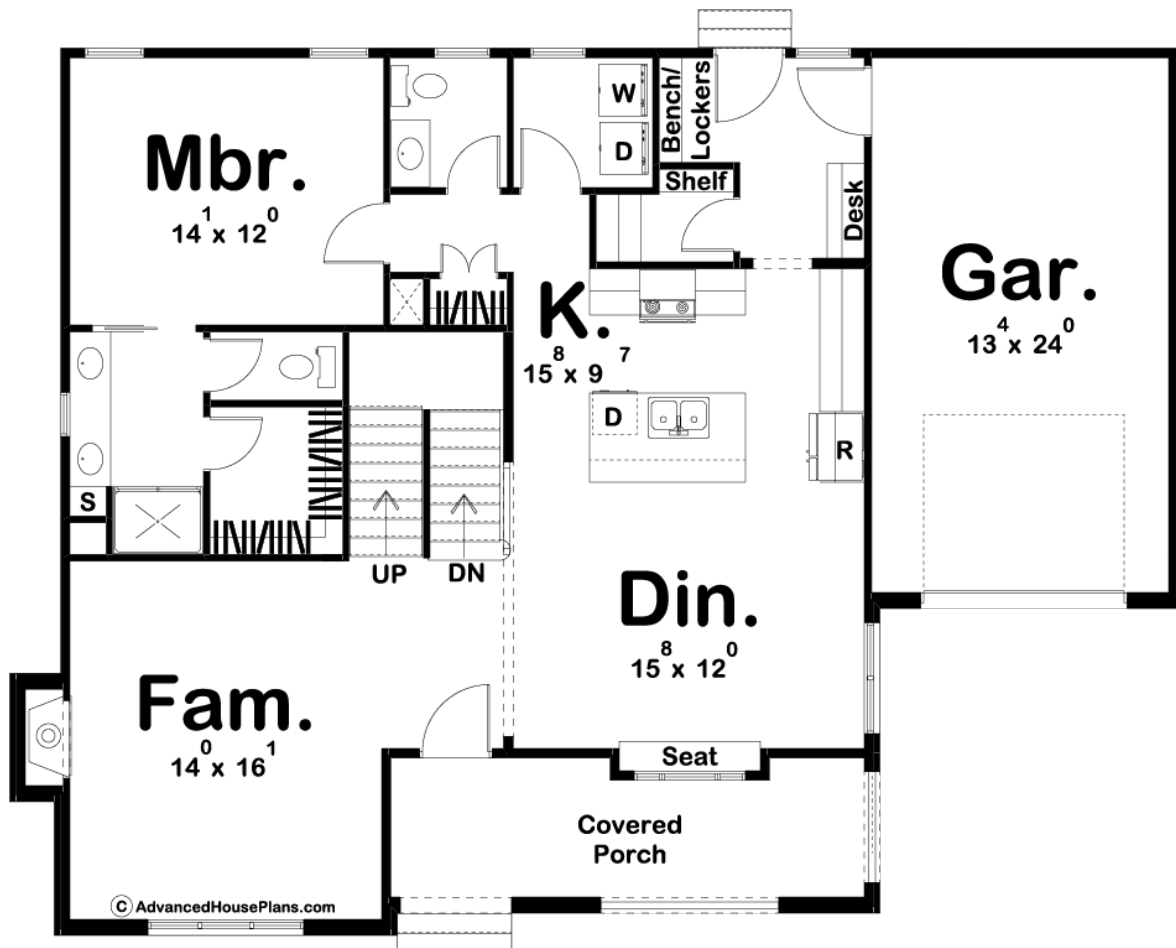


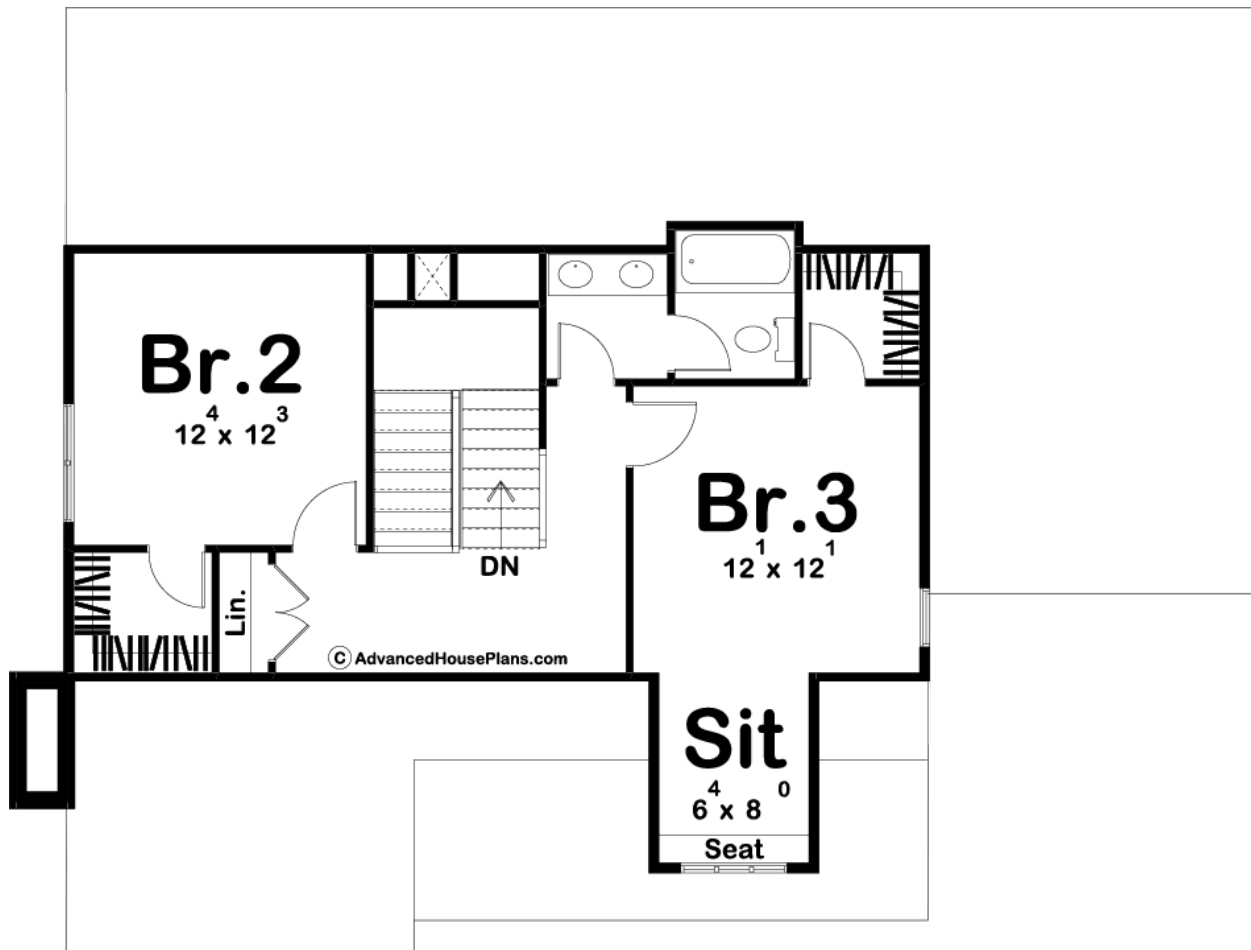
ADVANCED  
HOUSE PLANS



### 29741 - Northridge Data Sheet

1912 SQ FT	3 BEDS	3 BATHS	1 BAYS	53' 0" WIDE	40' 0" DEEP
---------------	-----------	------------	-----------	----------------	----------------





## Construction Specs

### Layout

Bedrooms	3
Bathrooms	3
Garage Bays	1

### Square Footage

Main Level	1280 Sq. Ft.
Second Level	632 Sq. Ft.
Garage	337 Sq. Ft.
Total Finished Area	1912 Sq. Ft.

### Exterior Dimensions

Width	53' 0"
Depth	40' 0"

### Default Construction Stats

*Stats are unique to the individual plan.*

Foundation Type	Basement
-----------------	----------

Exterior Wall Construction	2x4
Roof Pitches	12/12 Primary, 6/12 4/12 Secondary
Foundation Wall Height	9'
Main Wall Height	9'
Second Wall Height	8'

## Plan Description

This charming modern cottage plan has excellent curb appeal with its brick facade. A covered front porch creates an inviting entry to the home. Inside the house, you'll find a family room that is warmed by a wonderful fireplace. The dining room flows perfectly into the kitchen and has a built-in window seat. The kitchen includes an island with a snack bar and a walk-in pantry. The main floor also includes a master suite that includes a bathroom with his/her vanities, an enclosed toilet area, and a walk-in closet. On the upper floor, you'll find 2 bedrooms. Bedrooms 2 and 3 share a conveniently located hall bathroom that has dual vanities. Each bedroom has its own walk-in closet. Bedroom 3 includes a wonderful sitting area with a built-in window seat. Back on the main floor, the home's 1 car garage accesses the home through a wonderful mudroom that includes a bench, lockers, and a built-in desk.