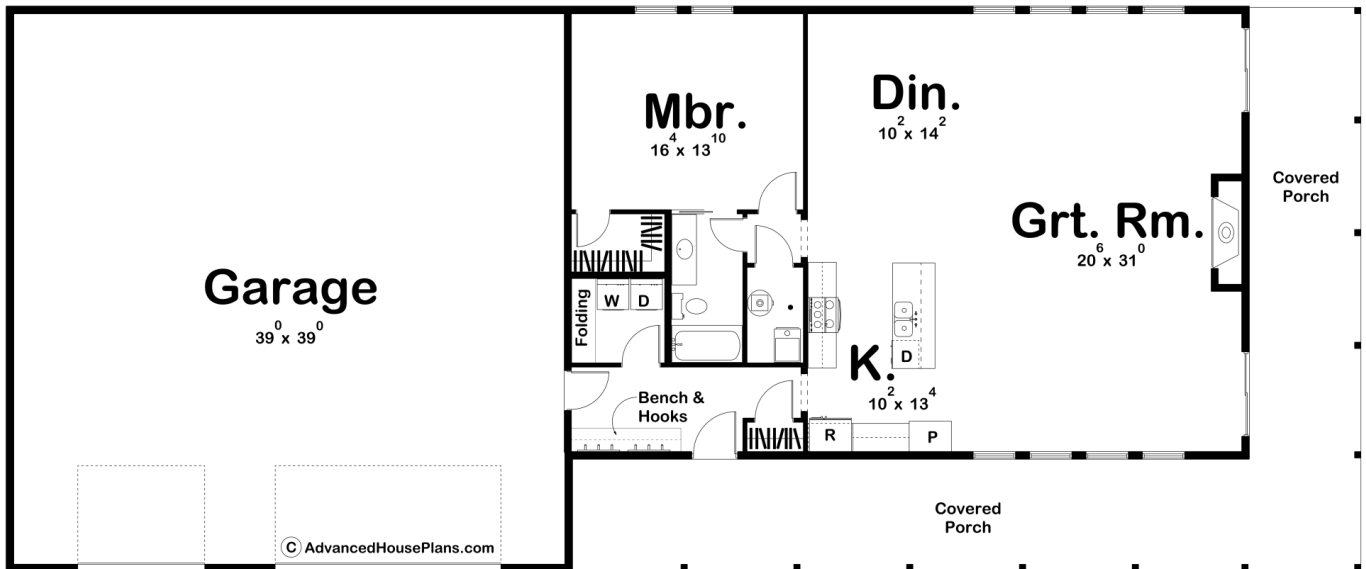




29668 - Northwood Data Sheet

1552 SQ FT	1 BEDS	1 BATHS	3 BAYS	96' 0" WIDE	40' 0" DEEP
---------------	-----------	------------	-----------	----------------	----------------



Construction Specs

Layout

Bedrooms

Bathrooms	1
Garage Bays	3

Square Footage

Main Level	1552 Sq. Ft.
Covered Area	704 Sq. Ft.
Garage	1584 Sq. Ft.
Total Finished Area	1552 Sq. Ft.

Exterior Dimensions

Width	96' 0"
Depth	40' 0"
Ridge Height <i>Calculated from main floor line</i>	21' 0"

Default Construction Stats

Stats are unique to the individual plan.

Foundation Type	Slab
Exterior Wall Construction	Post Frame
Roof Pitches	6/12 Primary
Main Wall Height	10'

Plan Description

Our Northwood plan is an amazing Barndominium style post frame house plan. The home's oversized 3-car garage makes a perfect place for any car collector or hobbyist. A large wrap-around covered porch greets guests into the home. The footprint of the home is simple to build with post frame construction. The kitchen, great room, and dining room are arranged in an open layout. The kitchen includes a pantry and a large island with a snack bar. The home's single bedroom shares a bathroom with the main level and features a walk-in closet.