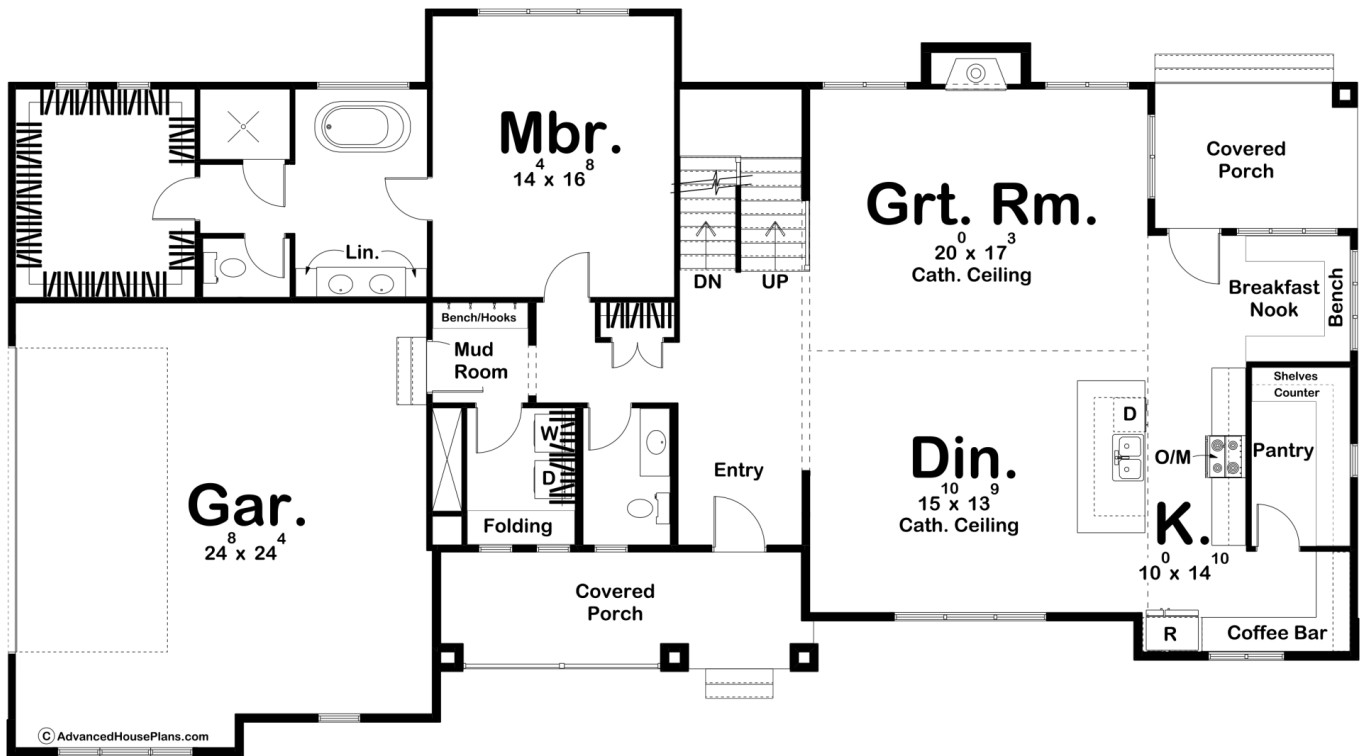
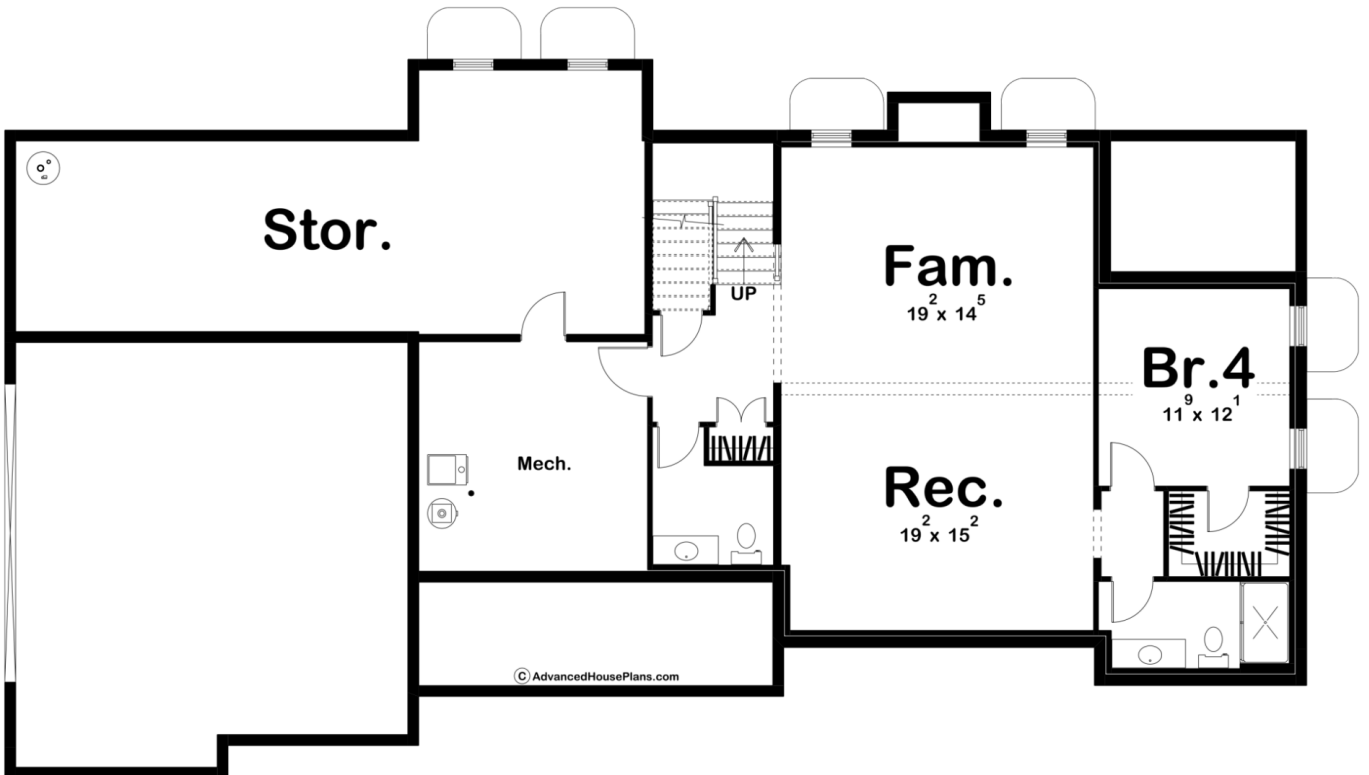
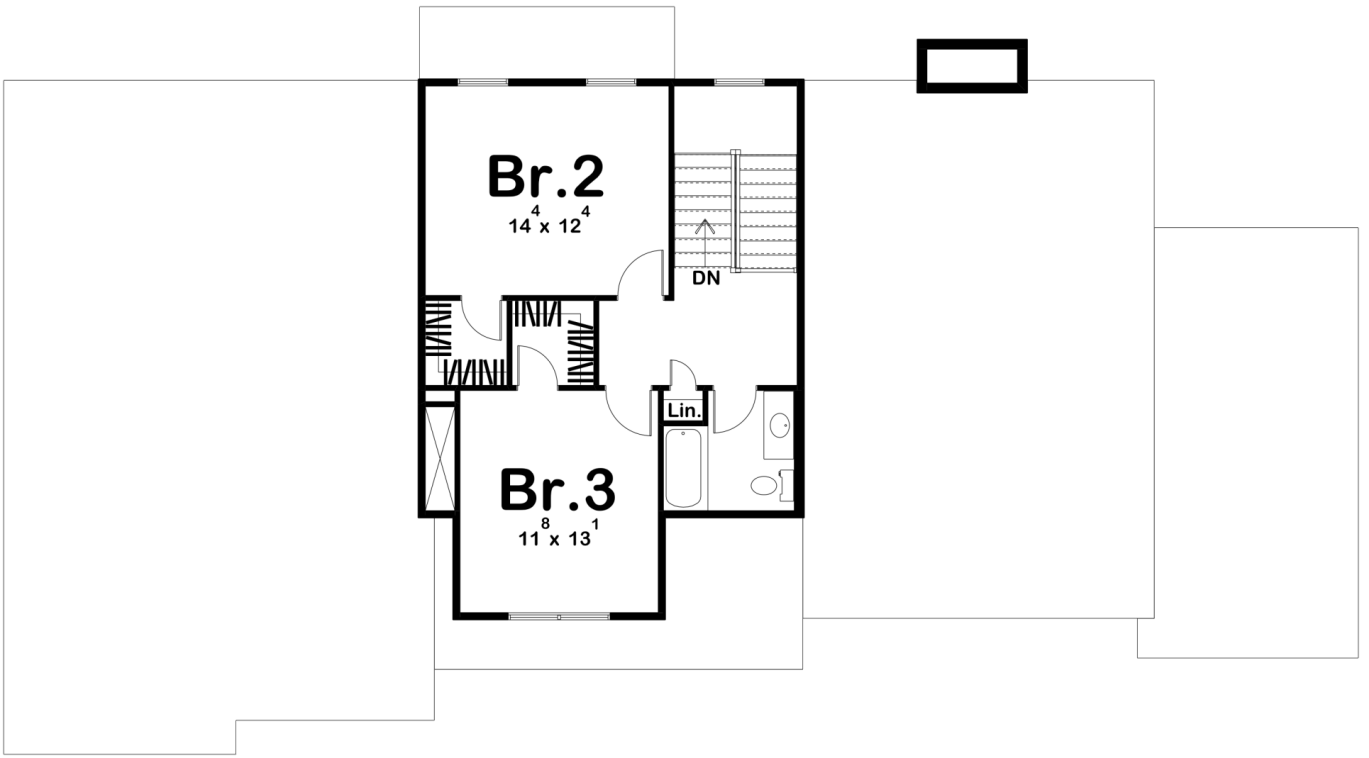




29405 - Oakland Data Sheet

2528 SQ FT	3 BEDS	3 BATHS	2 BAYS	79' 8" WIDE	44' 0" DEEP
---------------	-----------	------------	-----------	----------------	----------------





Construction Specs

Layout

Bedrooms	3
Bathrooms	3
Garage Bays	2

Square Footage

Main Level	1965 Sq. Ft.
Second Level	563 Sq. Ft.
Covered Area	258 Sq. Ft.
Garage	642 Sq. Ft.
Total Finished Area	2528 Sq. Ft.

Exterior Dimensions

Width	79' 8"
Depth	44' 0"
Ridge Height <i>Calculated from main floor line</i>	28' 2"

Default Construction Stats

Stats are unique to the individual plan.

Foundation Type	Basement
Exterior Wall Construction	2x4
Roof Pitches	Primary 12/12, Secondary 6/12
Foundation Wall Height	9'
Main Wall Height	10'
Second Wall Height	8'

Plan Description

This traditional style house plan offers 2528 square feet of living space with 3 bedrooms and 3 bathrooms. The exterior of the home features classic elements such as a pitched roof and a beautiful front porch.

Upon entering the home, you are greeted by a spacious foyer that leads to the formal living and dining rooms. The kitchen, complete with an island, walk-in pantry, and coffee bar, is open to the great and dining rooms, creating an inviting space for entertaining. The main level also includes a breakfast nook with access to the covered porch, a powder bath, laundry room, mudroom that leads to the two-car garage, and the master suite. This bedroom features a large walk-in closet and en-suite bathroom with a dual vanity, soaking tub, and separate shower. Upstairs, you can find bedrooms two and three, which both have walk-in closets and share a bathroom. An optional finished basement adds 1094 square feet, storage, an extra bedroom, a family room, rec room, and two additional bathrooms.