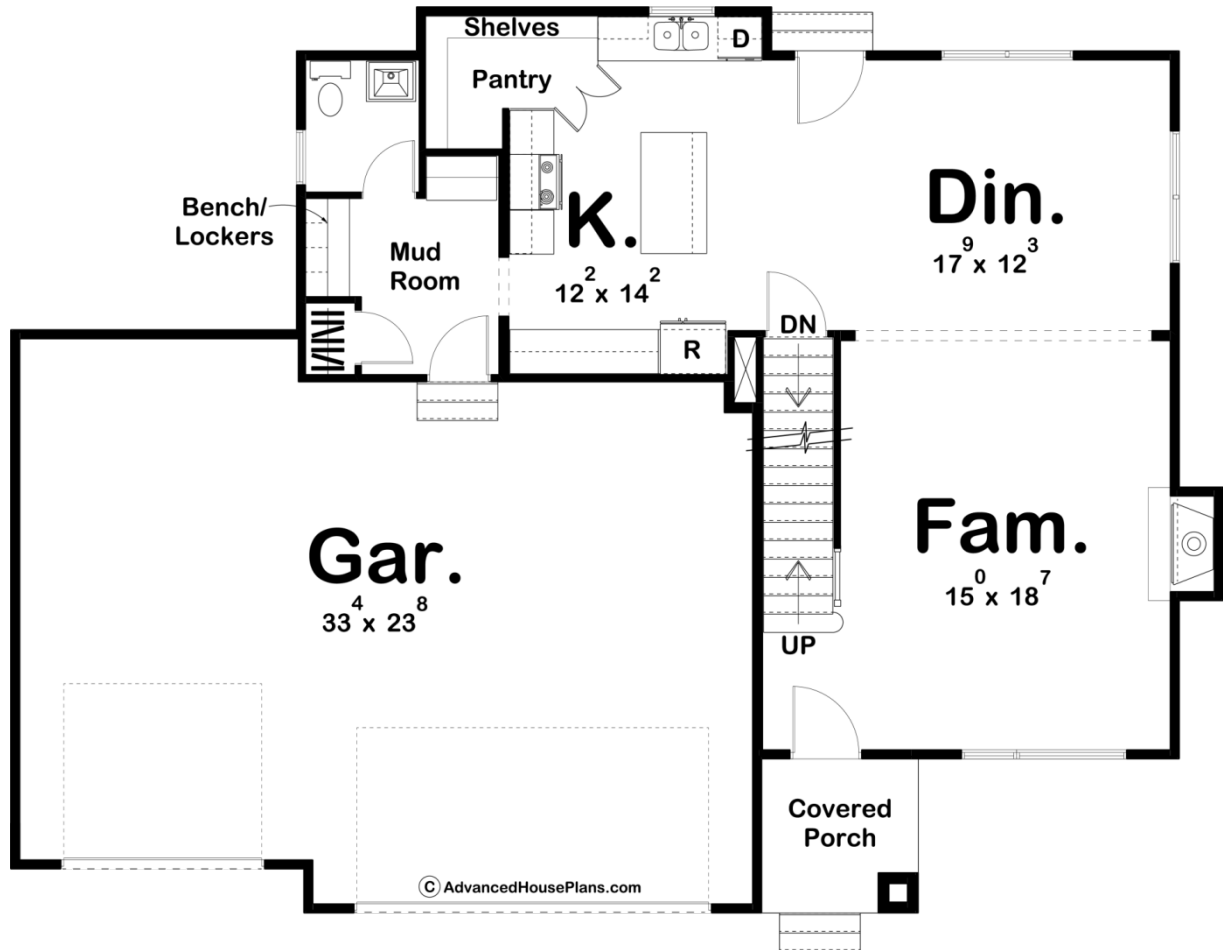
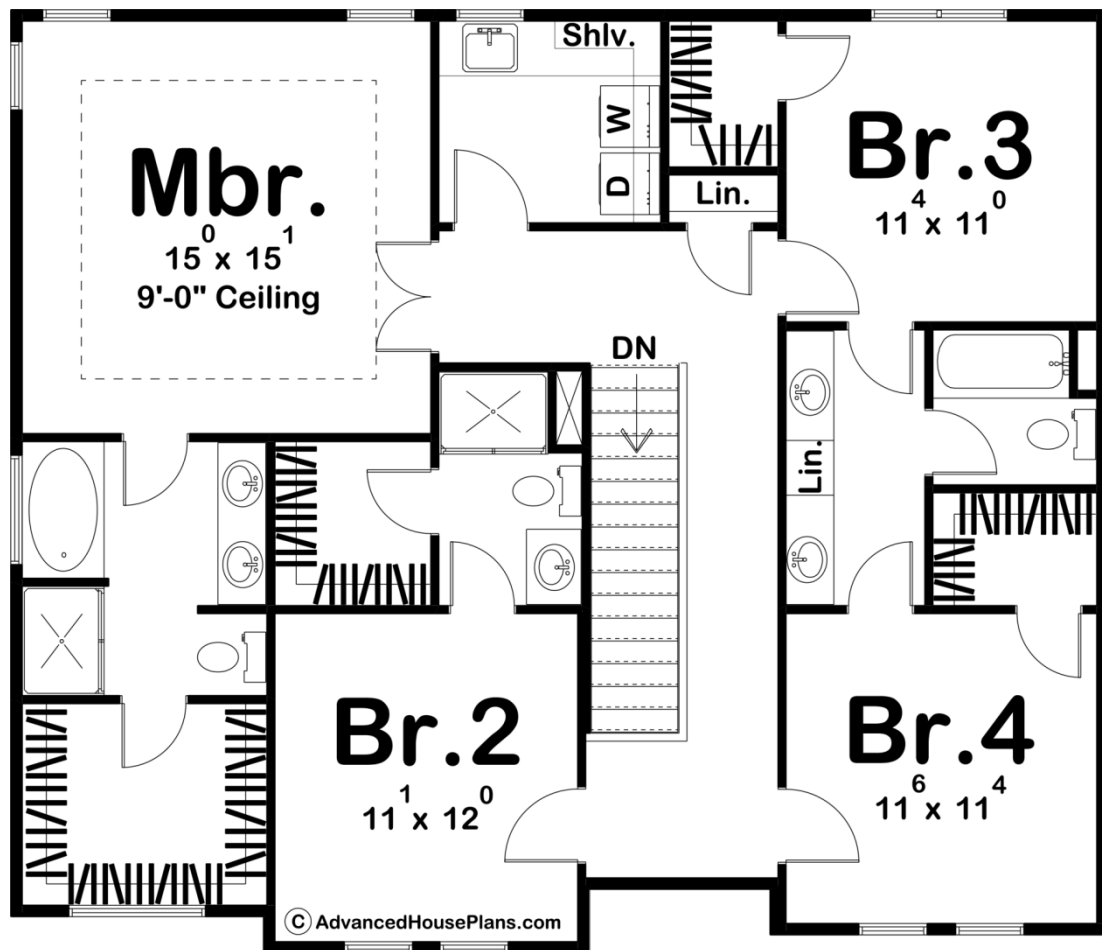




29677 - Pacific Heights Data Sheet

2270 SQ FT	4 BEDS	4 BATHS	3 BAYS	55' 0" WIDE	41' 0" DEEP
---------------	-----------	------------	-----------	----------------	----------------





© AdvancedHousePlans.com

Construction Specs

Layout

Bedrooms	4
Bathrooms	4
Garage Bays	3

Square Footage

Main Level	983 Sq. Ft.
Second Level	1287 Sq. Ft.
Covered Area	55 Sq. Ft.
Garage	809 Sq. Ft.
Total Finished Area	2270 Sq. Ft.

Exterior Dimensions

Width	55' 0"
Depth	41' 0"

Default Construction Stats

Stats are unique to the individual plan.

Foundation Type	Basement
Exterior Wall Construction	2x4
Roof Pitches	4/12 Primary, 3/12 Secondary
Foundation Wall Height	9'
Main Wall Height	9'
Second Wall Height	8'

Plan Description

Stone accents and glass garage doors embellish the front of this smartly designed, 2-story modern house plan. Just inside from the shelter of the covered front porch, guests are welcomed by expansive views of the family room and naturally illuminated dining area beyond. The dining area lies open to the kitchen which features an island with a breakfast bar, ample counter space, and roomy walk-in pantry. Just off the kitchen, a mudroom with bench, lockers, coat closet and powder bath, provides a buffer between the home's living areas and the 3-car garage. Upstairs bedrooms are configured for family life, with the master suite well separated from the secondary bedrooms. This master suite features a walk-in closet and a bath with dual sinks, soaking tub and shower. Bedrooms 3 and 4 each have walk-in closets and share a jack and jill bath. Bedroom 2 has its own bathroom and a walk-in closet. The upstairs laundry room includes a folding counter, soaking sink, and nearby linen closet is convenient to all of the bedrooms.