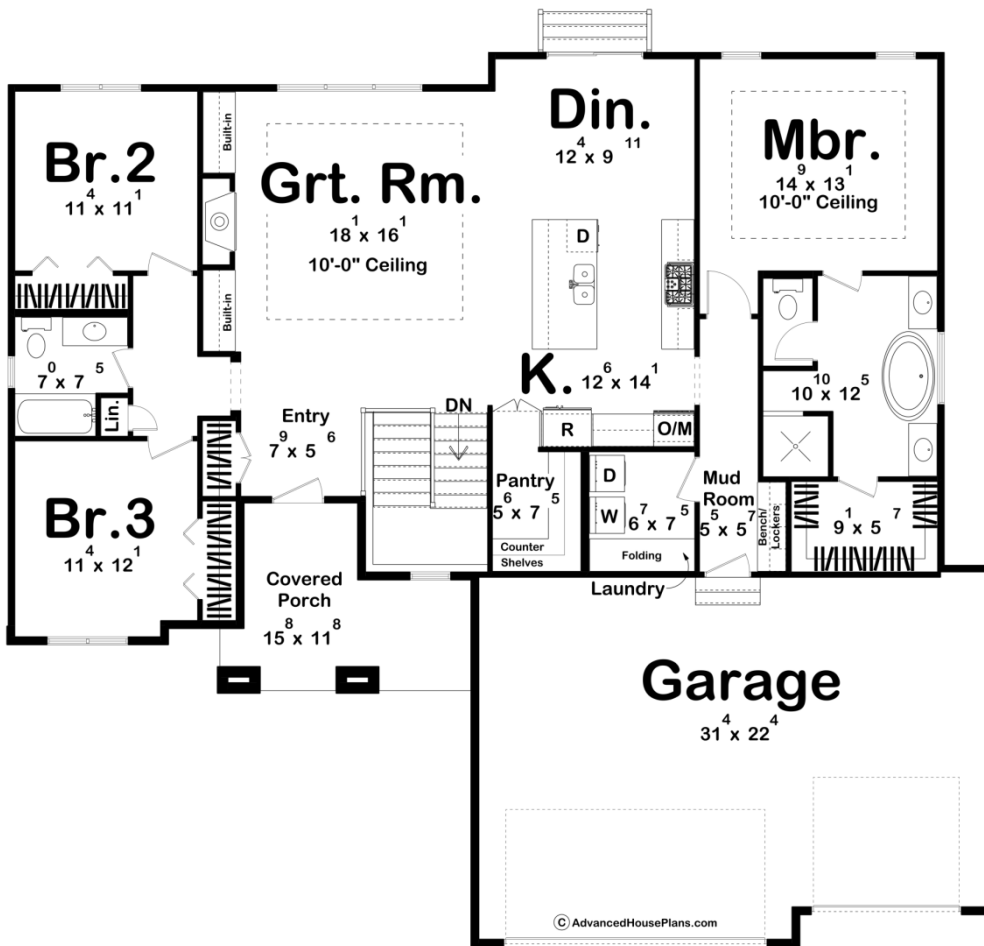




**29676 - Pacific Woods Data Sheet**

1824 SQ FT	3 BEDS	2 BATHS	3 BAYS	60' 8" WIDE	55' 0" DEEP
---------------	-----------	------------	-----------	----------------	----------------



**Construction Specs**

Layout

Bedrooms

Bathrooms	2
-----------	---

Garage Bays	3
-------------	---

### Square Footage

Main Level	1824 Sq. Ft.
------------	--------------

Garage	703 Sq. Ft.
--------	-------------

Total Finished Area	1824 Sq. Ft.
---------------------	--------------

### Exterior Dimensions

Width	60' 8"
-------	--------

Depth	55' 0"
-------	--------

### Default Construction Stats

*Stats are unique to the individual plan.*

Foundation Type	Basement
-----------------	----------

Exterior Wall Construction	2x4
----------------------------	-----

Roof Pitches	4/12
--------------	------

Foundation Wall Height	9'
------------------------	----

Main Wall Height	9'
------------------	----

## Plan Description

Meet Pacific Woods—a Modern Prairie Ranch with an eye-catching cedar and stone exterior. This spacious floor plan features an open great room with a cozy fireplace, flanked by built-ins and brightened by backyard views. The master suite offers a spa-like bath with a walk-in closet, while the hidden pantry and laundry room keep everything organized. Plus, enjoy the convenience of a 3-car garage—style and function all in one!