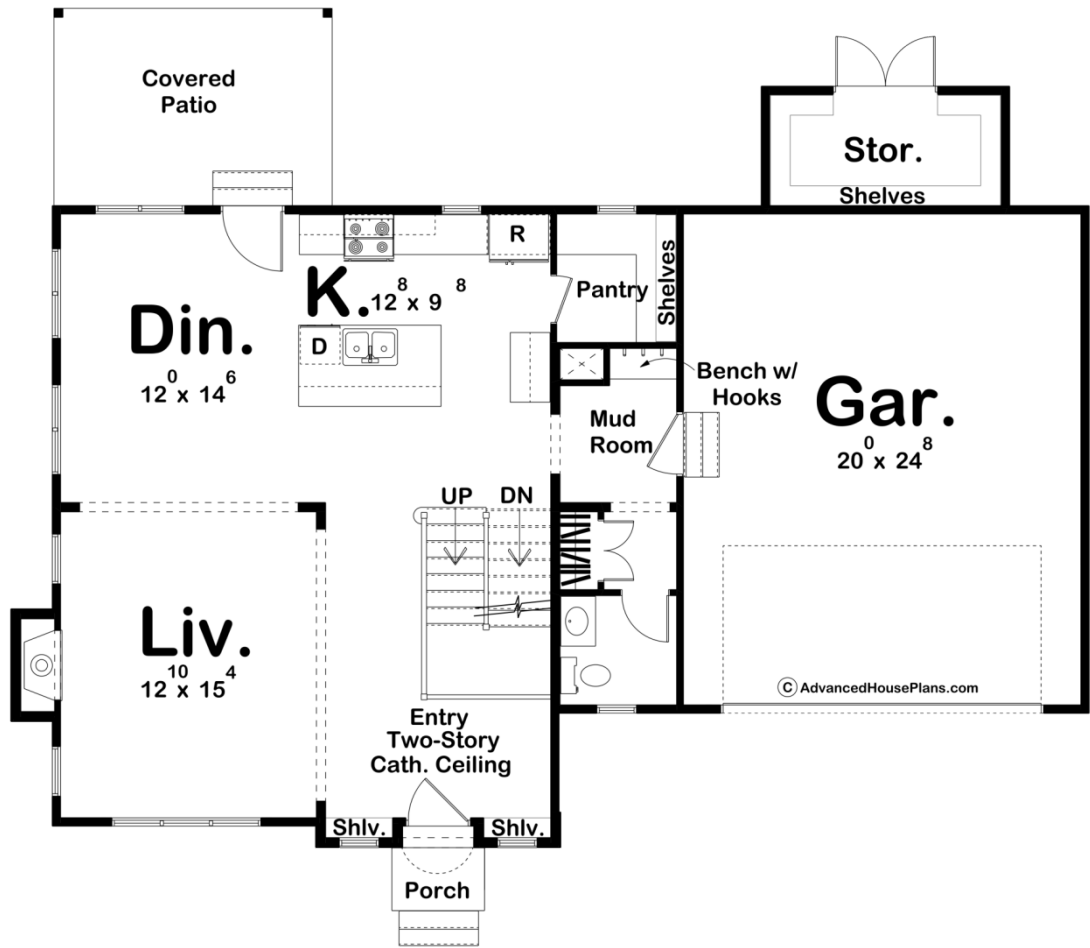
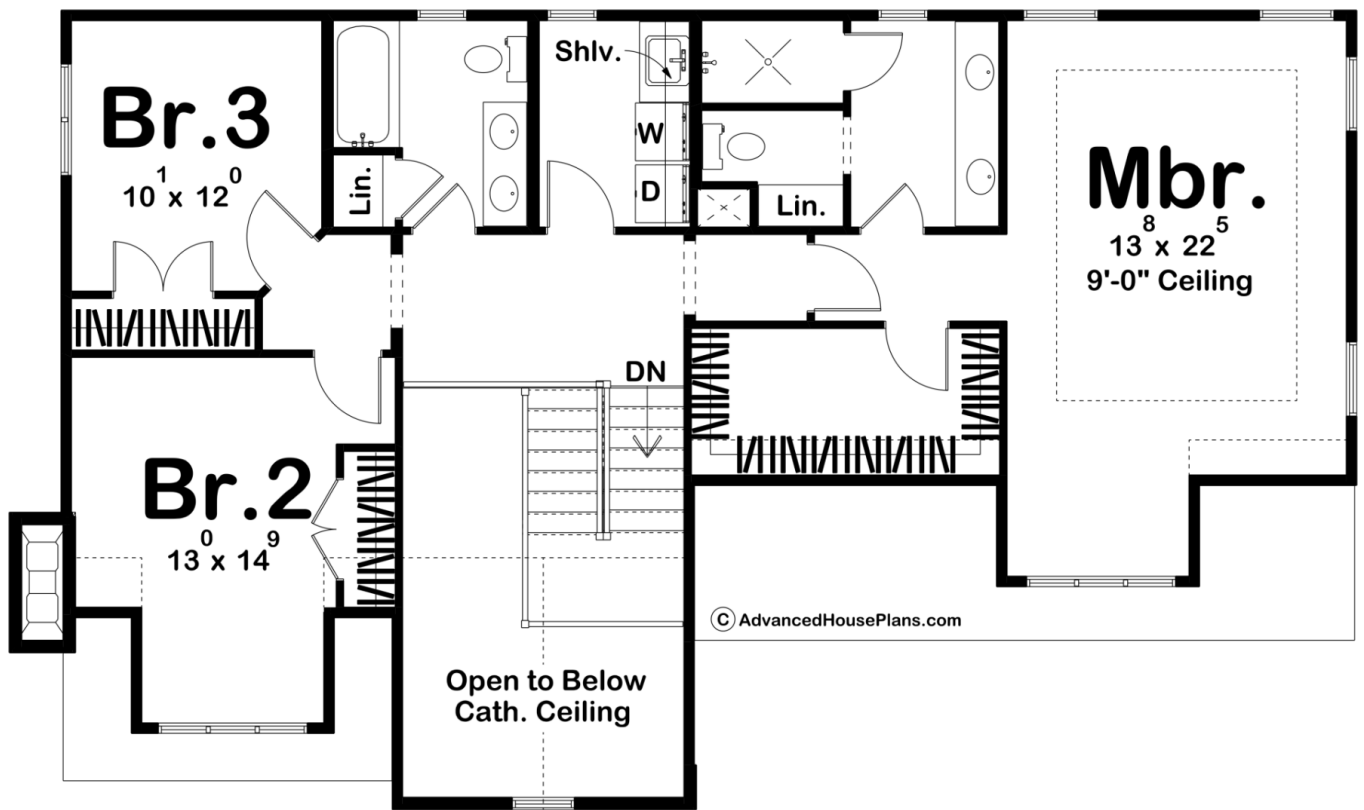




29933 - Palmer Data Sheet

2052 SQ FT	3 BEDS	3 BATHS	2 BAYS	54' 0" WIDE	41' 4" DEEP
---------------	-----------	------------	-----------	----------------	----------------





Construction Specs

Layout

Bedrooms	3
Bathrooms	3
Garage Bays	2

Square Footage

Main Level	950 Sq. Ft.
Second Level	1102 Sq. Ft.
Covered Area	140 Sq. Ft.
Garage	524 Sq. Ft.
Total Finished Area	2052 Sq. Ft.

Exterior Dimensions

Width	54' 0"
Depth	41' 4"
Ridge Height	31' 0"
<i>Calculated from main floor line</i>	

Default Construction Stats
Stats are unique to the individual plan.

Foundation Type	Basement
Exterior Wall Construction	2x4
Roof Pitches	12/12 Primary, 6/12 Secondary
Foundation Wall Height	9'
Main Wall Height	9'
Second Wall Height	8'

Plan Description

The Palmer plan is a beautiful cottage-style 2-story house plan. The home's dreamy exterior consists of stucco siding, wood garage doors, and stone accents. Just through the front entry door, you'll find yourself in an entryway that lies under a soaring 2 story ceiling. Adjacent to the entry is the home's living room which is warmed by a cozy fireplace. The kitchen has ample counter space and includes a large island with a snack bar and a large walk-in pantry. The rear covered patio provides a great space for outdoor entertainment and is accessible through the dining room. A convenient storage area is accessible from the backyard and provides a great place to store your lawn equipment. On the second level, you'll find 3 bedrooms. The master suite lies under a 9' decorative trayed ceiling. The master bathroom includes his/her vanities and a walk-in shower. Bedrooms 2 and 3 share a bathroom that is centrally located in the hallway next to the laundry room. Back on the main floor, the home's 2-car garage accesses the home through a convenient mudroom that includes a bench and lockers.