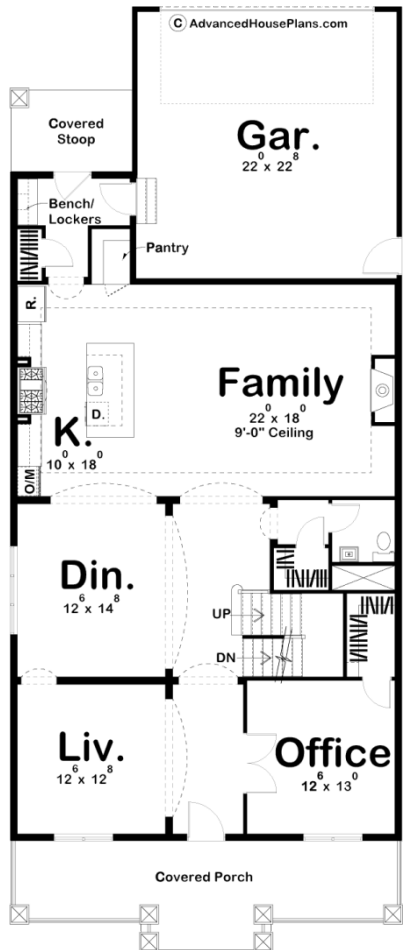
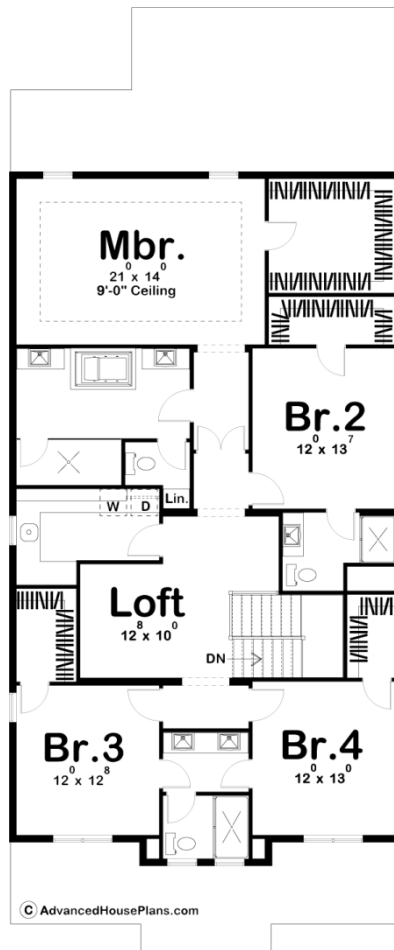




### 29355 - Park Meadows Data Sheet

3474 SQ FT	4 BEDS	3 BATHS	2 BAYS	33' 0" WIDE	80' 0" DEEP
---------------	-----------	------------	-----------	----------------	----------------





## Construction Specs

### Layout

Bedrooms	4
Bathrooms	3
Garage Bays	2

### Square Footage

Main Level	1661 Sq. Ft.
Second Level	1813 Sq. Ft.
Garage	515 Sq. Ft.
Total Finished Area	3474 Sq. Ft.

### Exterior Dimensions

Width	33' 0"
Depth	80' 0"
Ridge Height	30' 0"
<i>Calculated from main floor line</i>	

### Default Construction Stats

*Stats are unique to the individual plan.*

Foundation Type	Basement
Exterior Wall Construction	2x4
Roof Pitches	6/12 Primary 4/12 Secondary
Foundation Wall Height	9'
Main Wall Height	9'
Second Wall Height	8'

## Plan Description

A cost-conscious foundation footprint enhances the appeal of this family-friendly house plan. Family and friends are greeted by a wide front porch, framed by stout columns. Inside, a formal living room and office area flank the entry. A sizeable family room is situated farther inside and is open to an island kitchen and its adjacent dining area. A rear-load garage streamlines the design's width dimension for placement on narrower lots. Just off the garage, a covered stoop accesses the home through a mud area, complete with a bench and lockers. All bedrooms occupy the second level and share access to an open loft area at the top of the stairs. The master suite boasts a large walk-in closet and roomy bath area. His and her vanities flank a soaking tub, which lies opposite the walk-in shower and compartmented toilet. All secondary bedrooms feature walk-in closets. Bedroom 2 enjoys the privacy of its own bath. Bedrooms 3 and 4 share a bath. All bedrooms are in close proximity of the centrally located laundry with soaking sink and plenty of counter space for folding clothes. Advanced House Plans