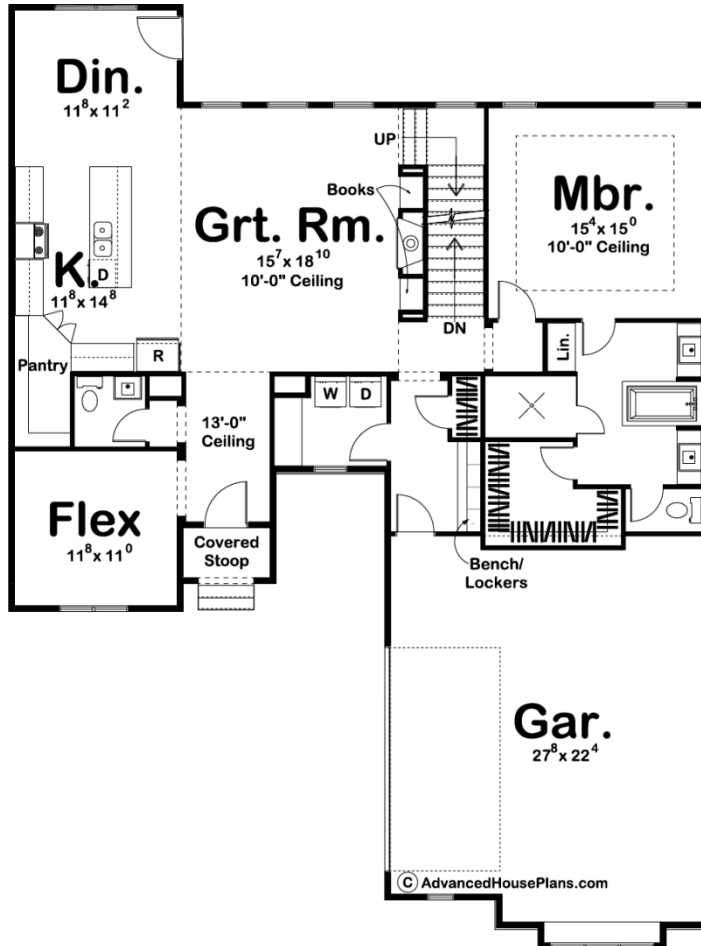


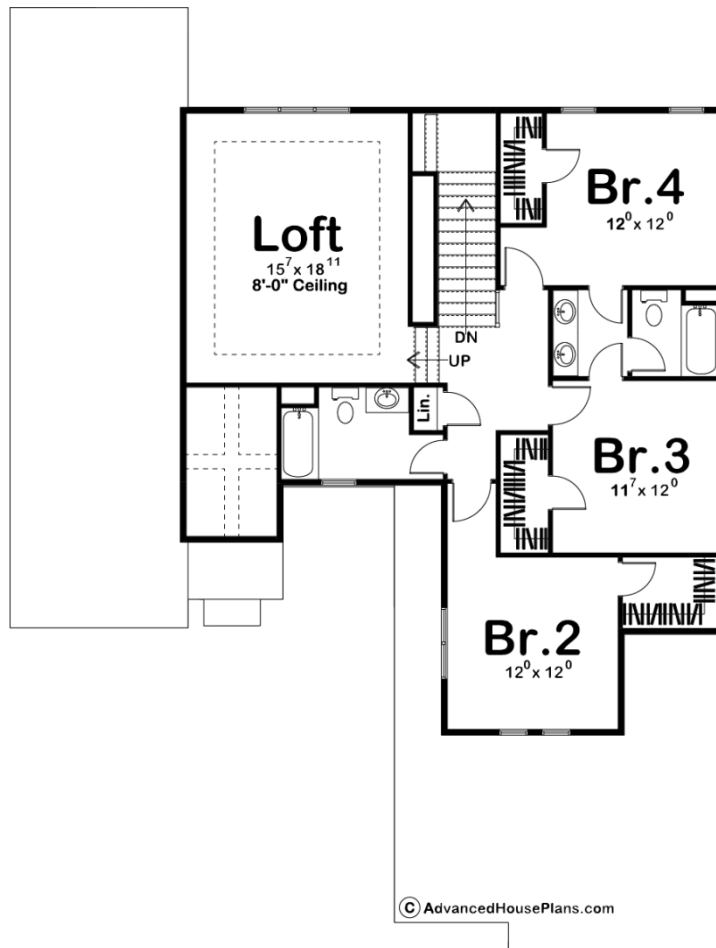


© WWW.ADVANCEDHOUSEPLANS.COM

29342 - Pearson Data Sheet

2831 SQ FT	4 BEDS	4 BATHS	2 BAYS	50' 0" WIDE	68' 0" DEEP
---------------	-----------	------------	-----------	----------------	----------------





Construction Specs

Layout

Bedrooms	4
Bathrooms	4
Garage Bays	2

Square Footage

Main Level	1671 Sq. Ft.
Second Level	1160 Sq. Ft.
Garage	611 Sq. Ft.
Total Finished Area	2831 Sq. Ft.

Exterior Dimensions

Width	50' 0"
Depth	68' 0"
Ridge Height	27' 0"
<i>Calculated from main floor line</i>	

Default Construction Stats

Stats are unique to the individual plan.

Foundation Type	Basement
Exterior Wall Construction	2x4
Roof Pitches	Primary 6/12
Foundation Wall Height	9'
Main Wall Height	9'
Second Wall Height	8'

Plan Description

The Pearson is a Mediterranean 1½ Story home with a sleek exterior and comfortable interior. Simple, yet very sophisticated, this plan is sure to impress as much as it is cost-effective to build. The plan features an impressive master suite with his and her vanity, full-sized tub, a large walk-in tile shower, and a spacious walk-in closet. Each of the additional 3 bedrooms has generous walk-in closets. Step up into the raised loft space for cozy entertaining, or just let the kids have the oversized room to call their own. This room adds a classy architectural element to this home with lots of surprises.