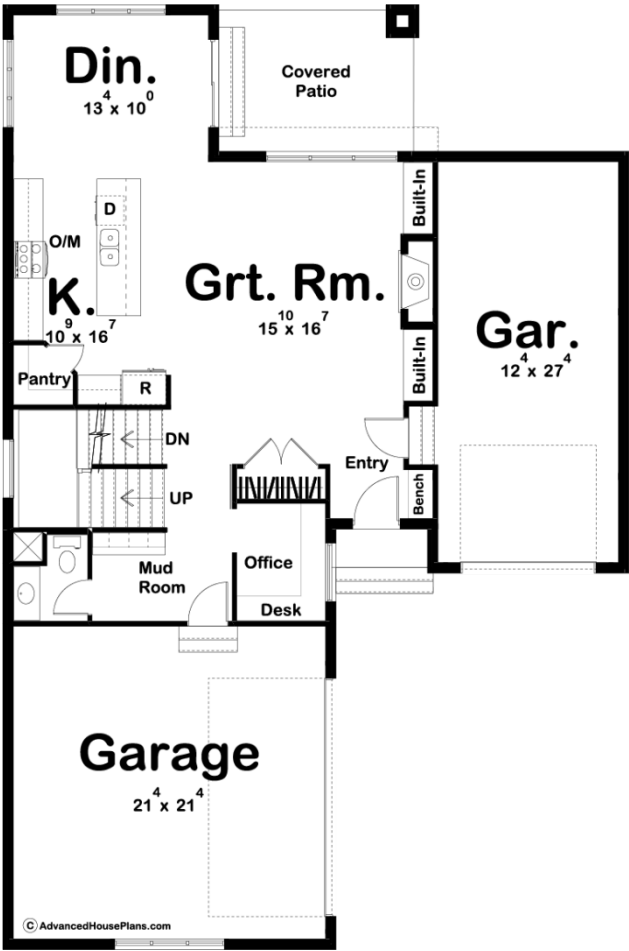
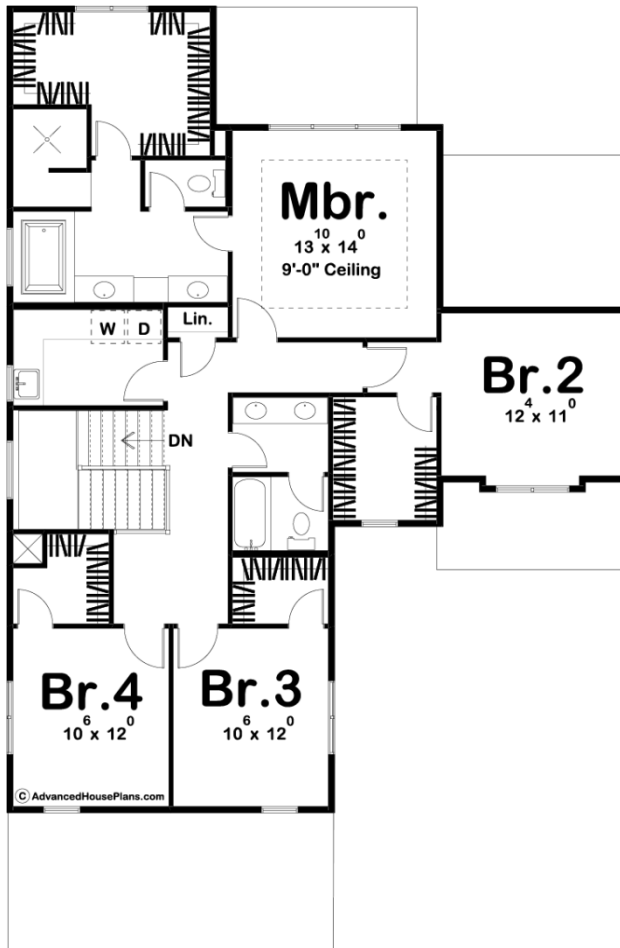




29791 - Pickering Data Sheet

| | | | | | |
|---------------|-----------|------------|-----------|----------------|----------------|
| 2417 SQ FT | 4 BEDS | 3 BATHS | 3 BAYS | 42' 0" WIDE | 63' 8" DEEP |
|---------------|-----------|------------|-----------|----------------|----------------|





Construction Specs

| Layout | |
|---|--------------|
| Bedrooms | 4 |
| Bathrooms | 3 |
| Garage Bays | 3 |
| Square Footage | |
| Main Level | 1023 Sq. Ft. |
| Second Level | 1394 Sq. Ft. |
| Garage | 839 Sq. Ft. |
| Total Finished Area | 2417 Sq. Ft. |
| Exterior Dimensions | |
| Width | 42' 0" |
| Depth | 63' 8" |
| Default Construction Stats | |
| <i>Stats are unique to the individual plan.</i> | |
| Foundation Type | Basement |

| | |
|----------------------------|------------------------------|
| Exterior Wall Construction | 2x4 |
| Roof Pitches | 6/12 Primary, 4/12 Secondary |
| Foundation Wall Height | 9' |
| Main Wall Height | 9' |
| Second Wall Height | 8' |

Plan Description

This 2-story, Modern Farmhouse plan is highlighted on the exterior by board and batten siding. The sense of open space makes an immediate impression upon entering the home. The large great room is warmed by a fireplace that is flanked by built-in bookshelves. In the kitchen, you will find an island work area with a breakfast bar and a large walk-in pantry. Just off the kitchen is a large dining room that leads to the covered patio. Upstairs you will find the large master suite that includes a luxurious bathroom that has his/her vanities, a soaking tub, a walk-in shower and a large walk-in closet with a bench. Just outside the master suite is a functional laundry area with a soaking sink and folding counter. Bedrooms 2, 3 and 4 each have their own walk-in closet and share a conveniently located bathroom.