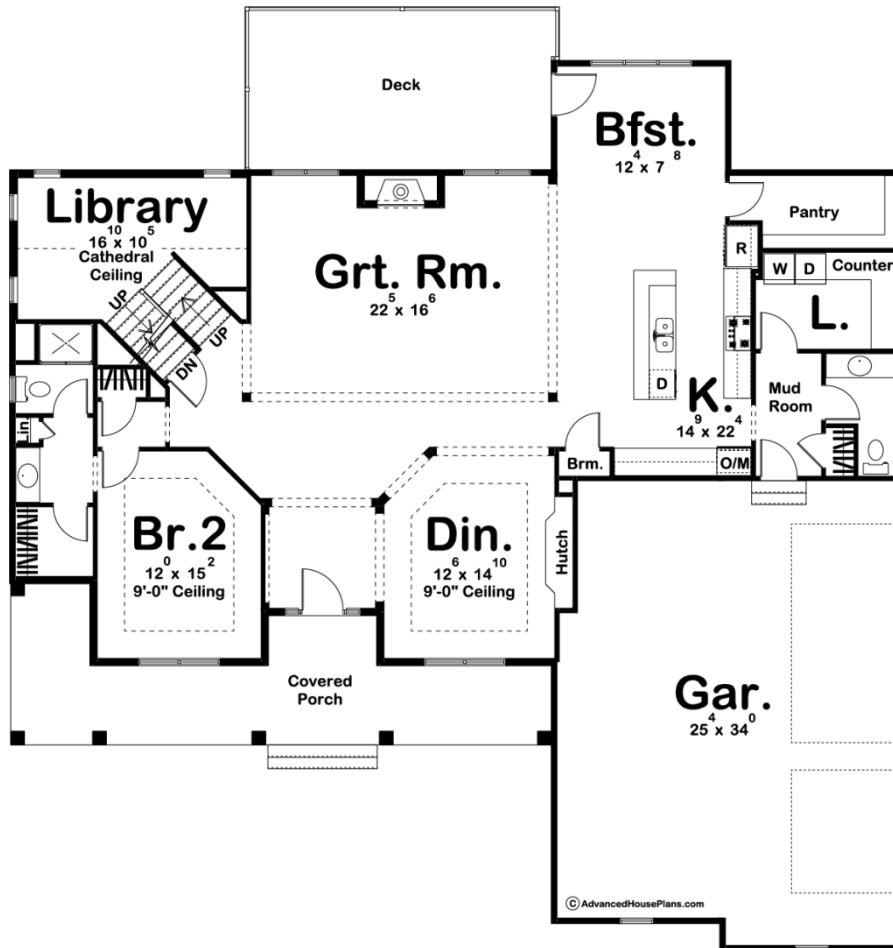
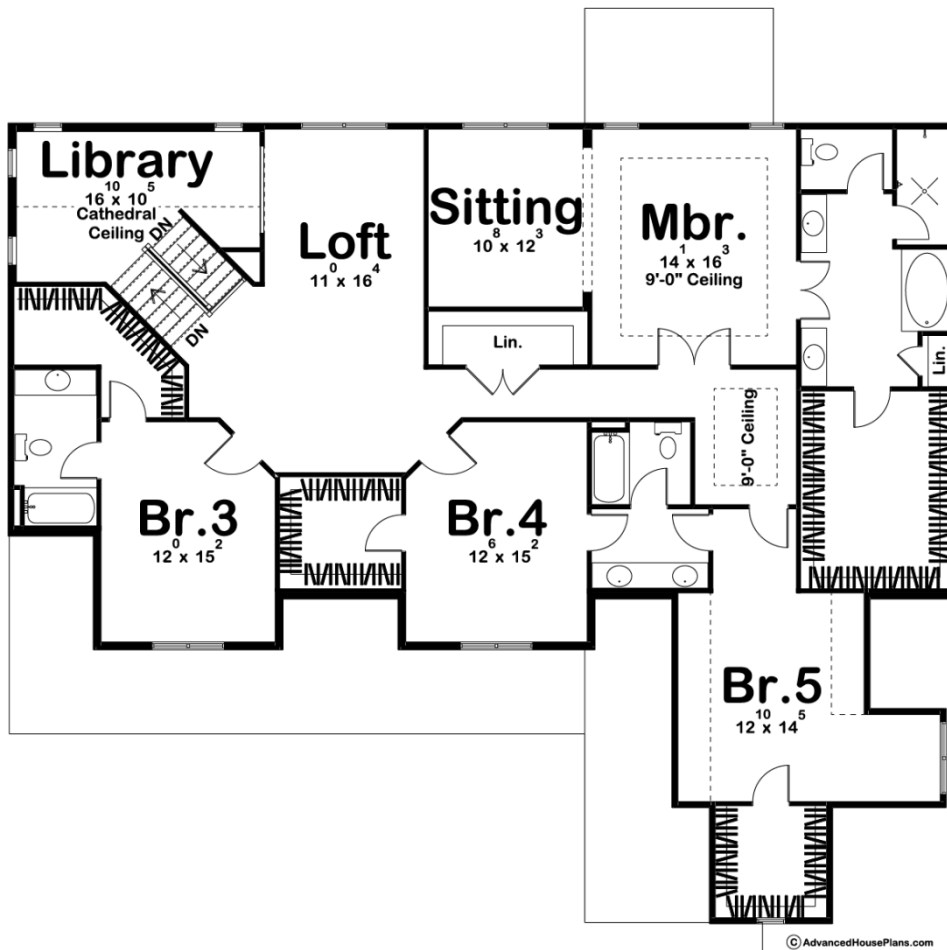




29523 - Pine Valley Data Sheet

4332 SQ FT	5 BEDS	5 BATHS	3 BAYS	66' 0" WIDE	69' 0" DEEP
---------------	-----------	------------	-----------	----------------	----------------





© AdvancedHousePlans.com

Construction Specs

Layout

Bedrooms	5
Bathrooms	5
Garage Bays	3

Square Footage

Main Level	2062 Sq. Ft.
Second Level	2270 Sq. Ft.
Garage	837 Sq. Ft.
Total Finished Area	4332 Sq. Ft.

Exterior Dimensions

Width	66' 0"
Depth	69' 0"
Ridge Height	32' 0"
<i>Calculated from main floor line</i>	

Default Construction Stats

Stats are unique to the individual plan.

Foundation Type	Basement
Exterior Wall Construction	2x4
Roof Pitches	8/12 Primary, 4/12 & 12/12 Secondary
Foundation Wall Height	9'
Main Wall Height	9'
Second Wall Height	8'

Plan Description

An inviting covered porch embraces the front of this Modern Farmhouse, 1.5-story house plan. Once inside, guests are greeted by wide-open views of the Great Room, Kitchen, Dining and Breakfast area. The kitchen offers plenty of workspaces and includes a walk-in pantry double ovens and an oversized island. The adjoining bayed breakfast area accesses a covered rear porch for open-air dining options. On the opposite side of this design's floor plan, a sizeable in-law suite lies hidden away for privacy. Its bath area includes a vanity, private shower and toilet, and walk-in closet. Midway up the stairs lies a convenient Library, great for studying or reading a book on a Sunday afternoon. Upstairs, features a Loft and all three secondary bedrooms enjoy walk-in closets. Bedroom 3 has its own bath, while bedrooms 4 and 5 share a conveniently located hall bath, just off the central loft area. The oversized Master bedroom includes a sitting room, and an expansive bathroom with his and hers vanities, walk-in shower, soaking tub and a massive closet! Back on the main floor, the 3-car garage has convenient access points to the home through the mudroom, complete with benches and storage cubbies. This practical area accesses the laundry, which includes counter space and space for hampers.