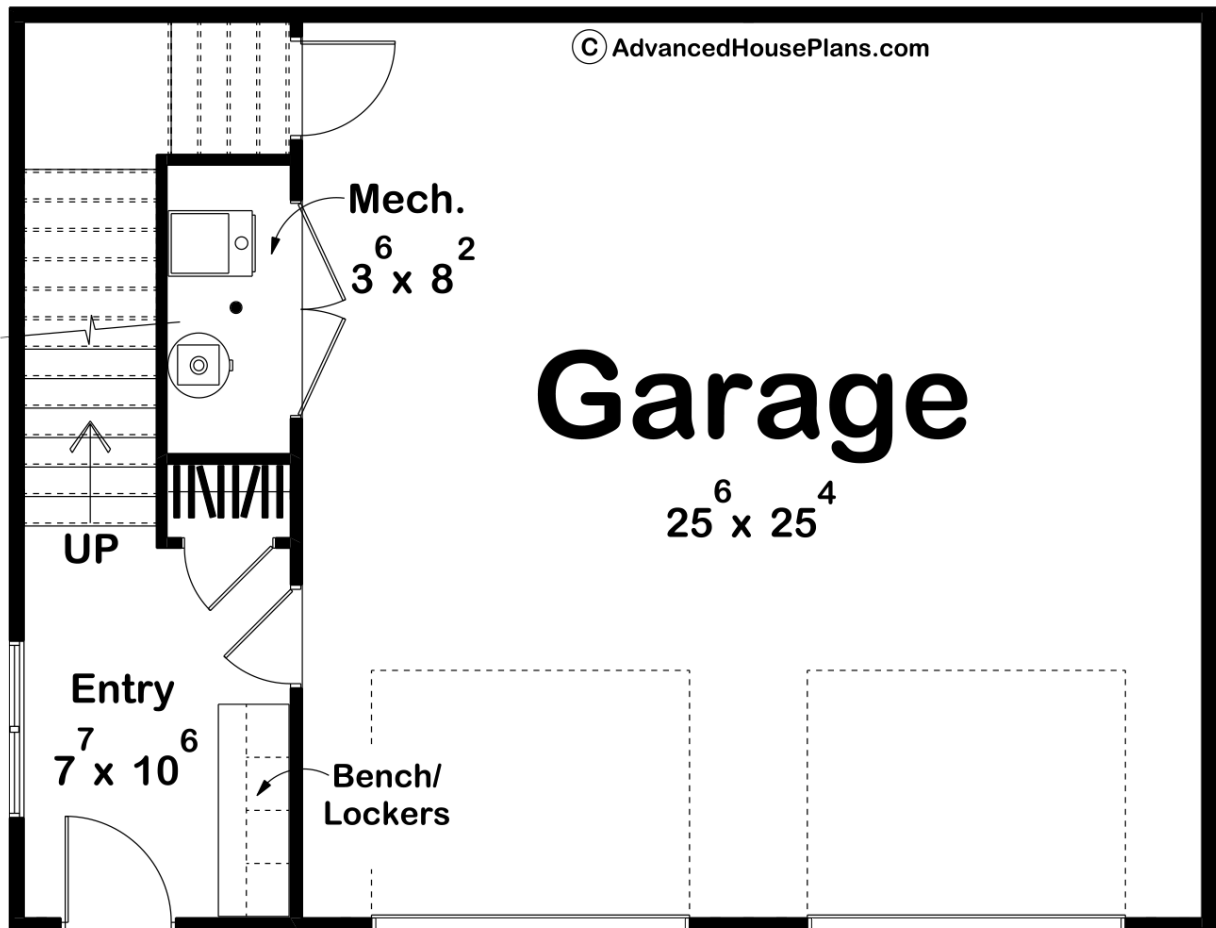
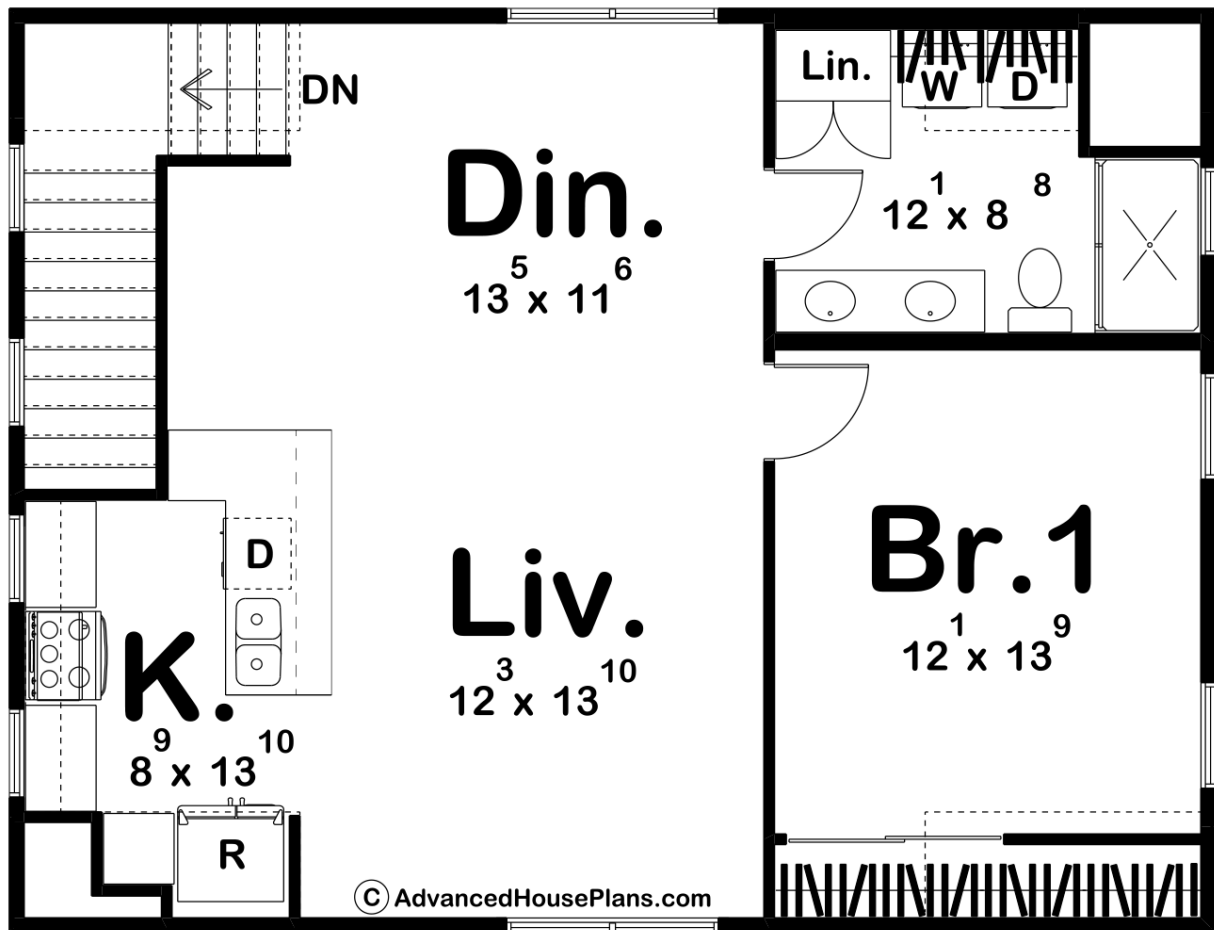




30446 - Pineville Data Sheet

1009 SQ FT	1 BEDS	1 BATHS	2 BAYS	34' 0" WIDE	26' 0" DEEP
---------------	-----------	------------	-----------	----------------	----------------





Construction Specs

Layout

Bedrooms	1
Bathrooms	1
Garage Bays	2

Square Footage

Main Level	185 Sq. Ft.
Second Level	824 Sq. Ft.
Garage	671 Sq. Ft.
Total Finished Area	1009 Sq. Ft.

Exterior Dimensions

Width	34' 0"
Depth	26' 0"
Ridge Height	25' 0"

Calculated from main floor line

Default Construction Stats

Stats are unique to the individual plan.

Foundation Type	Slab
Exterior Wall Construction	2x4
Roof Pitches	Primary 6/12, Secondary 3/12
Main Wall Height	10'
Second Wall Height	9'

Plan Description

The 2-story barndominium style carriage house offers a perfect blend of rustic charm and modern functionality. Situated atop a spacious garage on the main level, the upper floor welcomes you into a cozy living space designed for comfort and convenience. As you approach the structure, the exterior boasts a classic barn aesthetic with its board & batten siding, a shed roof and wood accents. A 2-car garage provides ample space for parking vehicles, storing tools, or indulging in hobbies. Upon entering the home, a spacious mud room accompanies you to the stairway leading up to the heart of the home on the second level. The open-concept layout seamlessly connects the kitchen, living area, dinette, and bedroom, creating a welcoming and versatile space for relaxation and entertaining. Completing the upper level, a combined laundry and bathroom area offers convenience and functionality, featuring modern fixtures and ample storage space for everyday essentials.