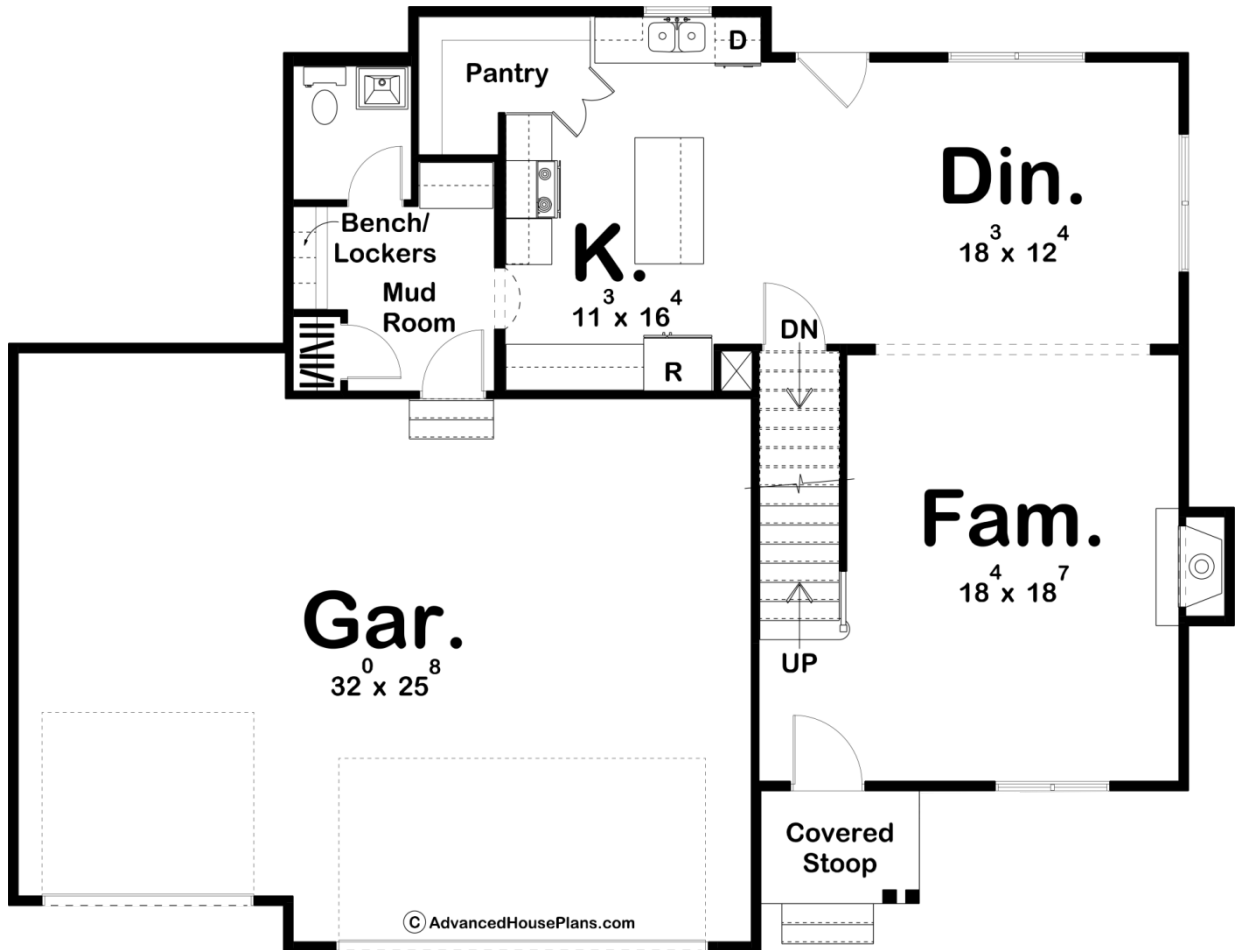
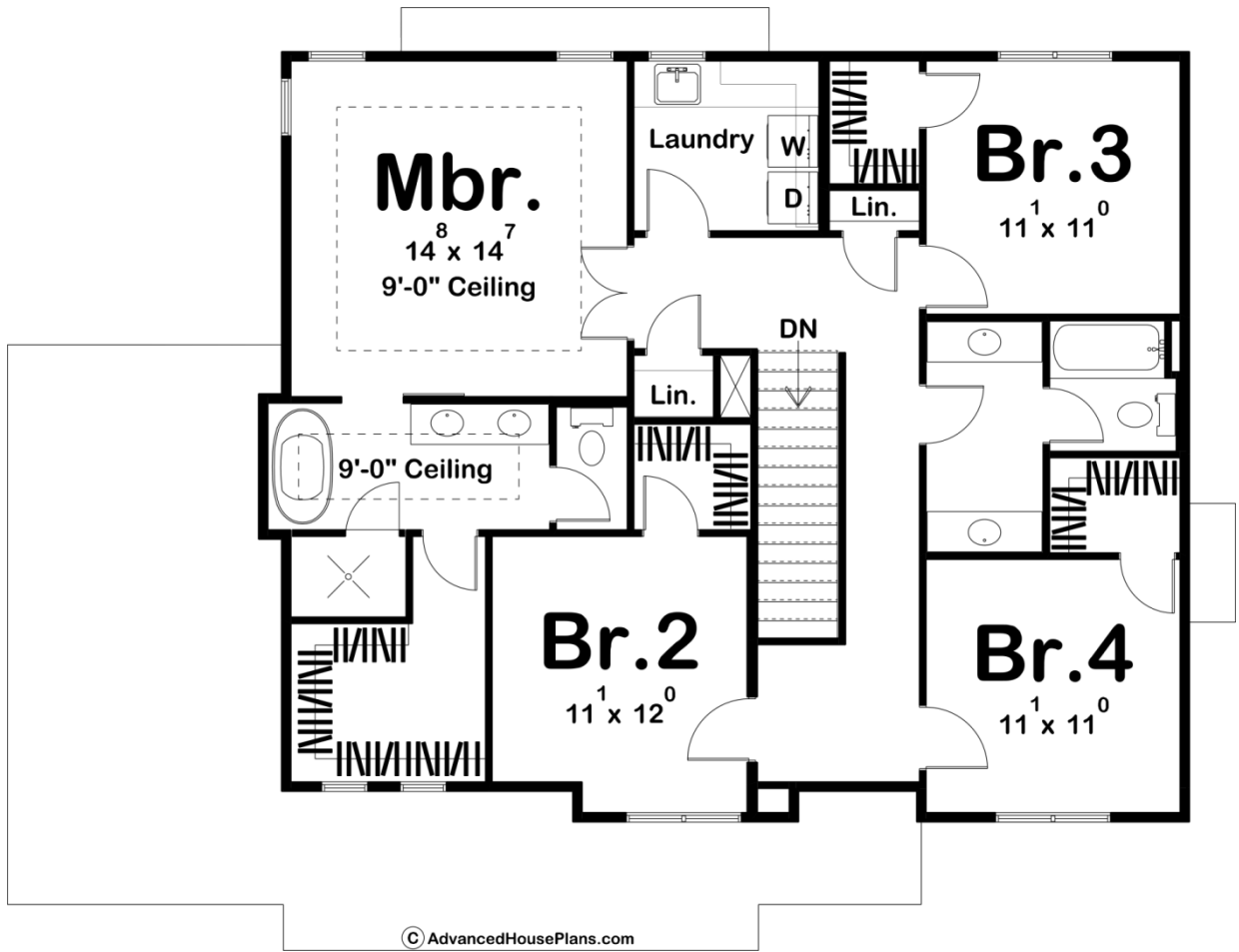




29689 - Prairie Rose Data Sheet

| | | | | | |
|---------------|-----------|------------|-----------|----------------|----------------|
| 2198 SQ FT | 4 BEDS | 3 BATHS | 3 BAYS | 52' 0" WIDE | 41' 0" DEEP |
|---------------|-----------|------------|-----------|----------------|----------------|





Construction Specs

| Layout | |
|---|--------------|
| Bedrooms | 4 |
| Bathrooms | 3 |
| Garage Bays | 3 |
| Square Footage | |
| Main Level | 948 Sq. Ft. |
| Second Level | 1250 Sq. Ft. |
| Garage | 788 Sq. Ft. |
| Total Finished Area | 2198 Sq. Ft. |
| Exterior Dimensions | |
| Width | 52' 0" |
| Depth | 41' 0" |
| Default Construction Stats | |
| <i>Stats are unique to the individual plan.</i> | |
| Foundation Type | Basement |

| | |
|----------------------------|------------------------------|
| Exterior Wall Construction | 2x4 |
| Roof Pitches | 6/12 Primary, 8/12 Secondary |
| Foundation Wall Height | 9' |
| Main Wall Height | 9' |
| Second Wall Height | 8' |

Plan Description

The Prairie Rose is a charming Modern Farmhouse style plan. The front elevation features a front stoop with wood columns and stone accents. Upon entry, you will see an excellent open floorplan that has great flow. The Family Room is warmed by a fireplace and flows perfectly to the dining room. The kitchen is great for the cook in the house and it has ample storage with the walk-in pantry. Upstairs in this 2 story house plan, you have 4 bedrooms. Bedrooms 2, 3 and 4 share a centrally located bathroom that comes with dual vanities. The master suite includes a beautiful bathroom that features a walk-in shower and a private stool room. This 2 story house plan is great for your growing family!