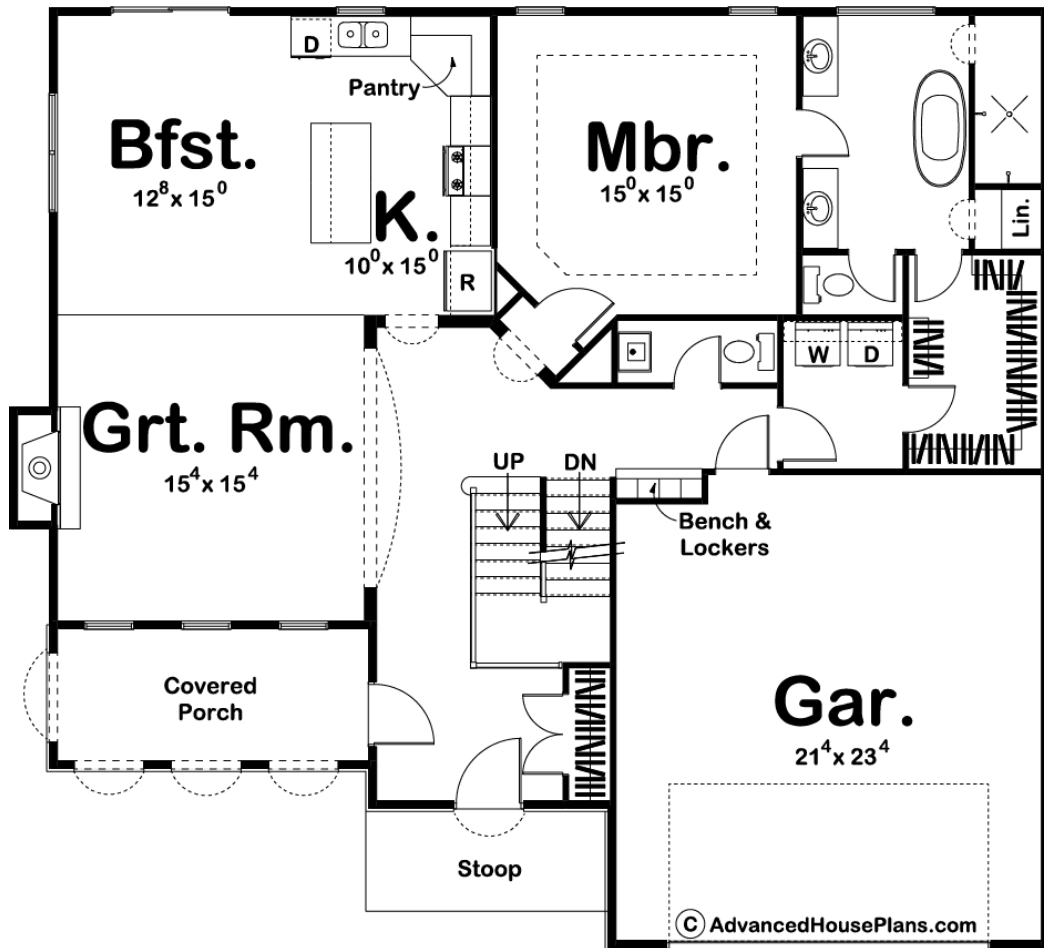
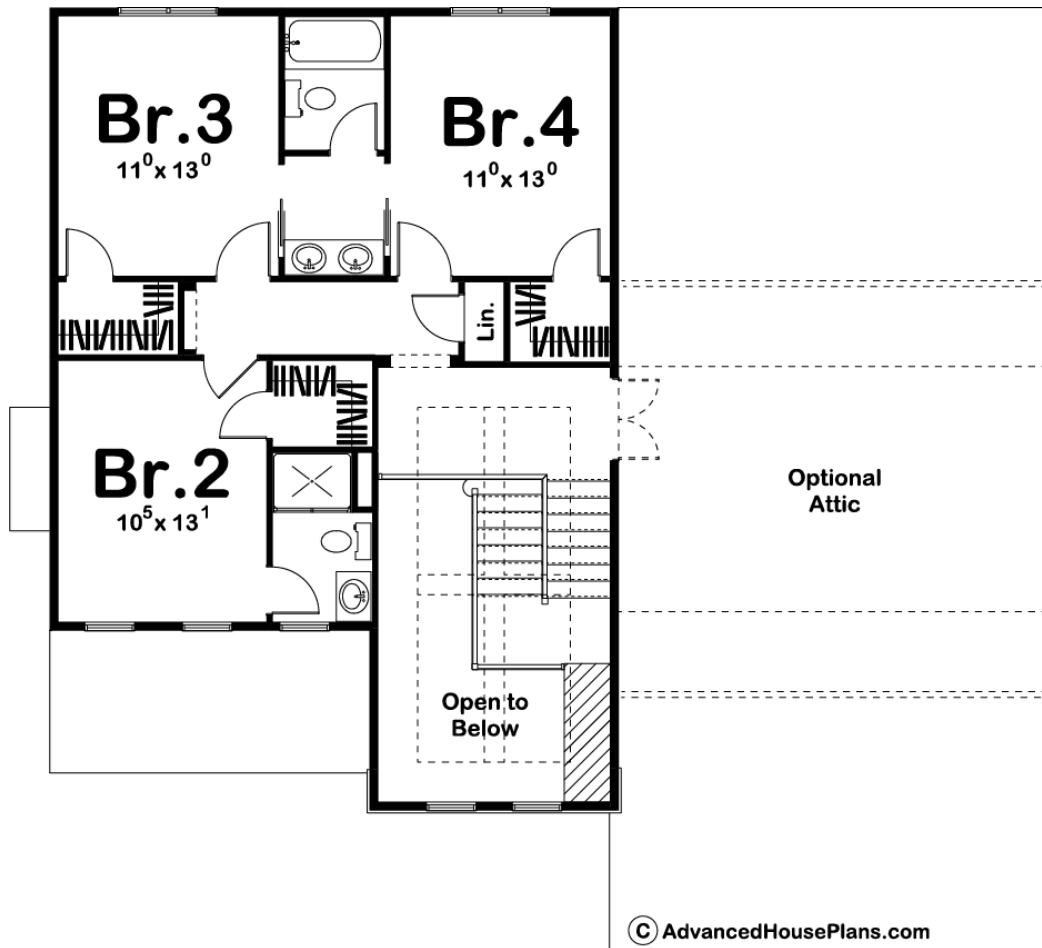




29297 - Primrose Data Sheet

2281 SQ FT	4 BEDS	4 BATHS	2 BAYS	52' 0" WIDE	47' 0" DEEP
---------------	-----------	------------	-----------	----------------	----------------





Construction Specs

Layout

Bedrooms	4
Bathrooms	4
Garage Bays	2

Square Footage

Main Level	1495 Sq. Ft.
Second Level	786 Sq. Ft.
Garage	519 Sq. Ft.
Total Finished Area	2281 Sq. Ft.

Exterior Dimensions

Width	52' 0"
Depth	47' 0"
Ridge Height	30' 0"
<i>Calculated from main floor line</i>	

Default Construction Stats

Stats are unique to the individual plan.

Foundation Type	Basement
Exterior Wall Construction	2x4
Roof Pitches	6/12
Foundation Wall Height	9'
Main Wall Height	9'
Second Wall Height	8'

Plan Description

Arches, brackets and a variety of exterior textures lend a decidedly Mediterranean feel to this attractive 1.5-story house plan. Just inside from the covered stoop, the entry hall offers the convenience of a coat closet as well as access to a lovely front covered porch. Farther inside, a wide arched opening bids entrance into the great room, with its fireplace and views to the front porch. The great room, breakfast area and kitchen flow seamlessly together for an airy, open feel. The kitchen features a large island workspace and practical corner pantry. A short distance from the kitchen lies a utility area with powder room, laundry room and a bench with lockers. This area provides access to the home's 2-car, front-load garage. A main-floor alcove offers access to the master suite, where the bath area includes his-and-her vanities, walk-in shower, compartmented toilet, linen closet and walk-in closet. All secondary bedrooms reside on the second level. Bedroom 2 has its own bath and a walk-in closet. Bedrooms 3 and 4 also feature walk-in closets and share a Jack-n-Jill bath. The second-floor landing offers access to an optional attic area for expanded storage. As always any Advanced House Plans home plan can be customized to fit your needs with our alteration department. Whether you need to add another garage stall, change the front elevation, stretch the home larger or just make the home plan more affordable for your budget we can do that and more for you at Ahp.