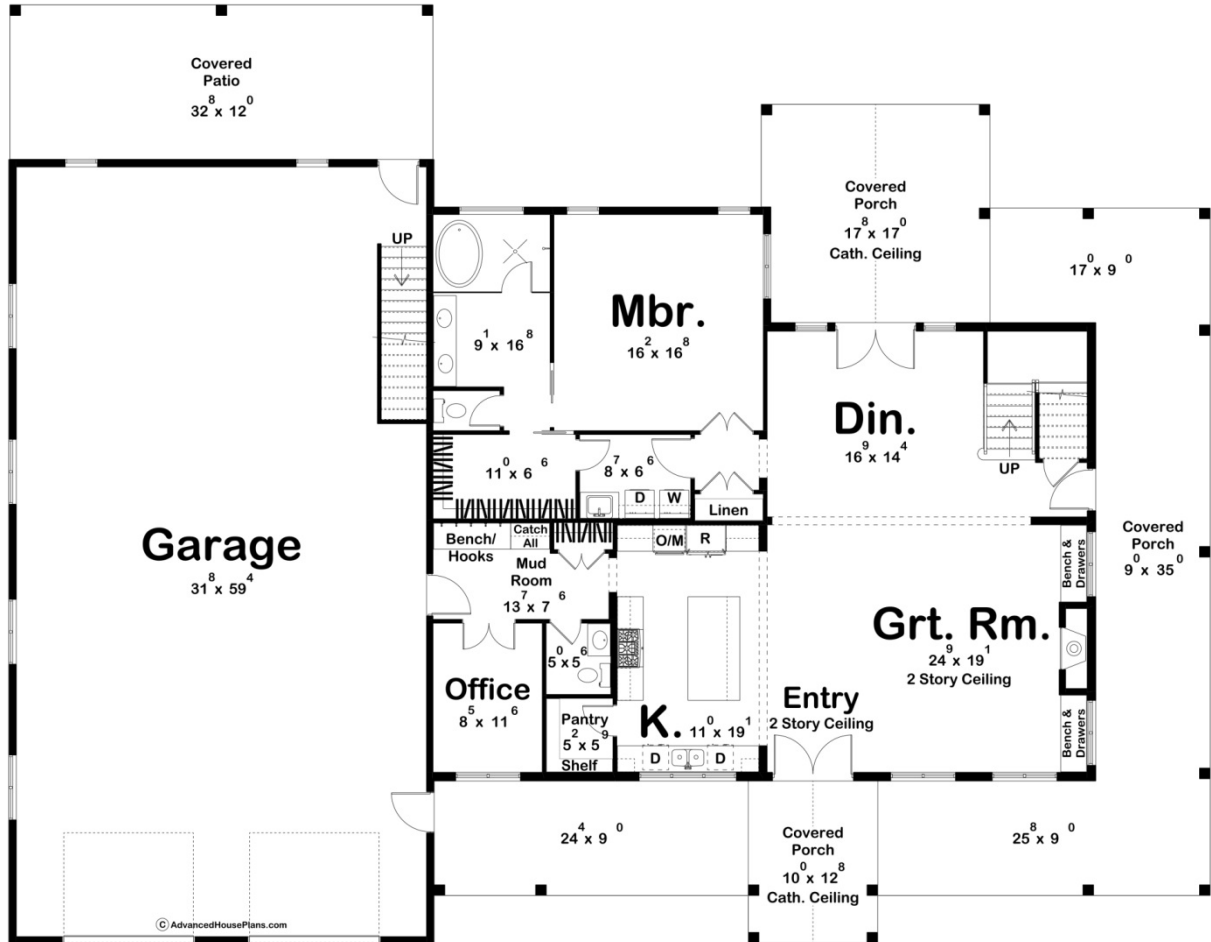
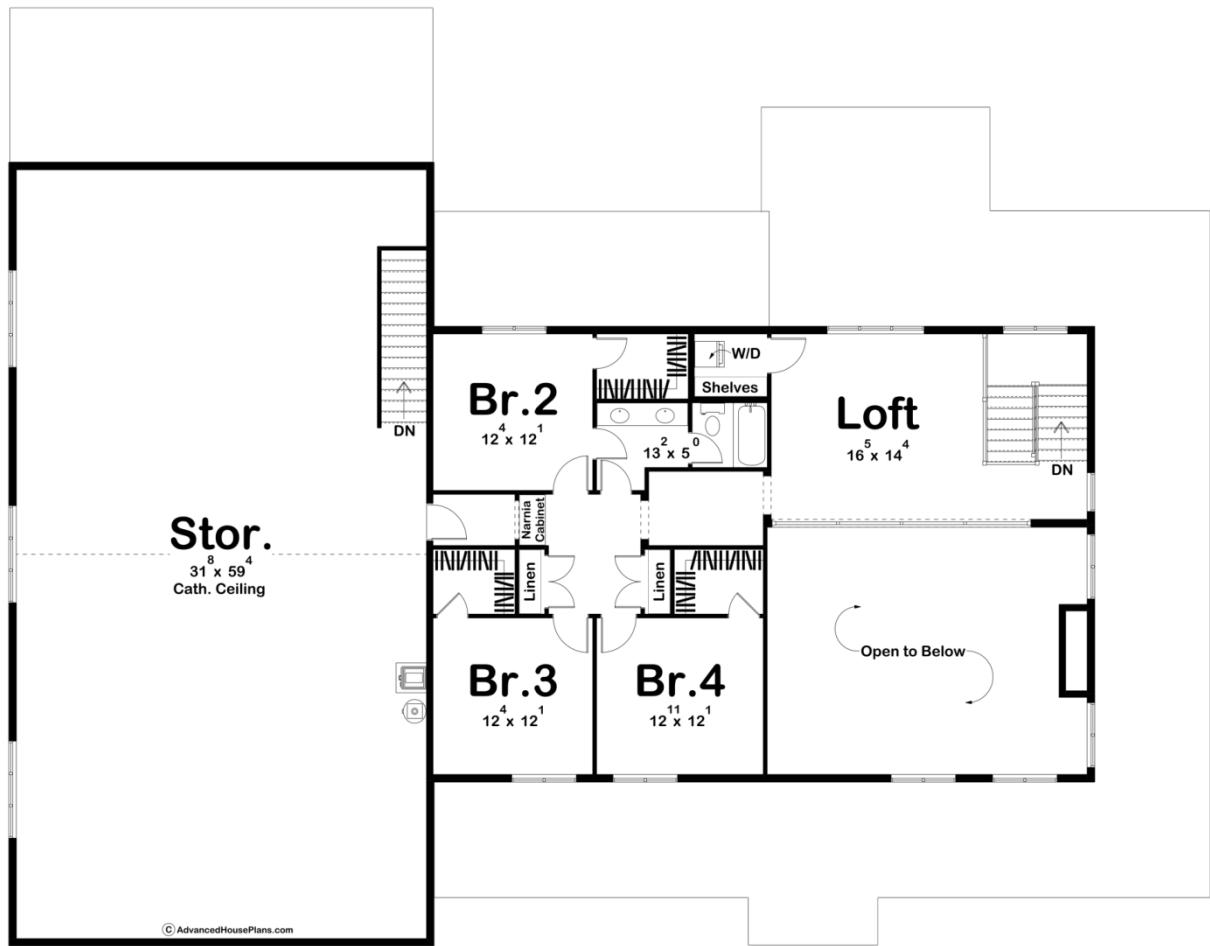




30443 - Redwater Data Sheet

3292 SQ FT	4 BEDS	3 BATHS	2 BAYS	92' 8" WIDE	72' 4" DEEP
---------------	-----------	------------	-----------	----------------	----------------





Construction Specs

Layout

Bedrooms	4
Bathrooms	3
Garage Bays	2

Square Footage

Main Level	2043 Sq. Ft.
Second Level	1249 Sq. Ft.
Covered Area	1731 Sq. Ft.
Garage	1949 Sq. Ft.
Total Finished Area	3292 Sq. Ft.

Exterior Dimensions

Width	92' 8"
Depth	72' 4"
Ridge Height	31' 0"
<i>Calculated from main floor line</i>	

Default Construction Stats

Stats are unique to the individual plan.

Foundation Type	Slab
Exterior Wall Construction	2x6
Roof Pitches	Primary 6/12, Secondary 3/12, Secondary 10/12
Main Wall Height	9'
Second Wall Height	8'

Plan Description

Welcome to the ideal blend of rustic charm and contemporary living with our modern farmhouse-style barndominium. This spacious home offers the perfect combination of comfort, functionality, and aesthetic appeal. The exterior features classic farmhouse elements such as board and batten siding, metal roof accents, and a charming front porch. The oversized garage shop is seamlessly integrated into the design, offering ample space for parking vehicles, storing equipment, and pursuing hobbies. Step inside to discover an inviting open concept layout that seamlessly connects the living, dining, and kitchen areas. The high ceilings and abundant natural light create an airy and spacious atmosphere. The kitchen is a chef's dream, featuring ample counter space and a large island for casual dining and meal preparation. The master suite is located on the main level for added convenience and privacy. It boasts a luxurious ensuite bathroom with dual sinks, a soaking tub, and a large walk-in shower. Three additional bedrooms are situated on the upper level, providing plenty of space for family members or guests. Each bedroom is generously sized and offers ample closet space. A flexible loft area overlooks the main living space below, perfect for use as a home office, playroom, or additional living area. Whether you're seeking a peaceful retreat in the countryside or a stylish suburban oasis, this modern farmhouse-style barndominium is sure to exceed your expectations. Welcome home to the perfect blend of comfort, convenience, and timeless appeal.