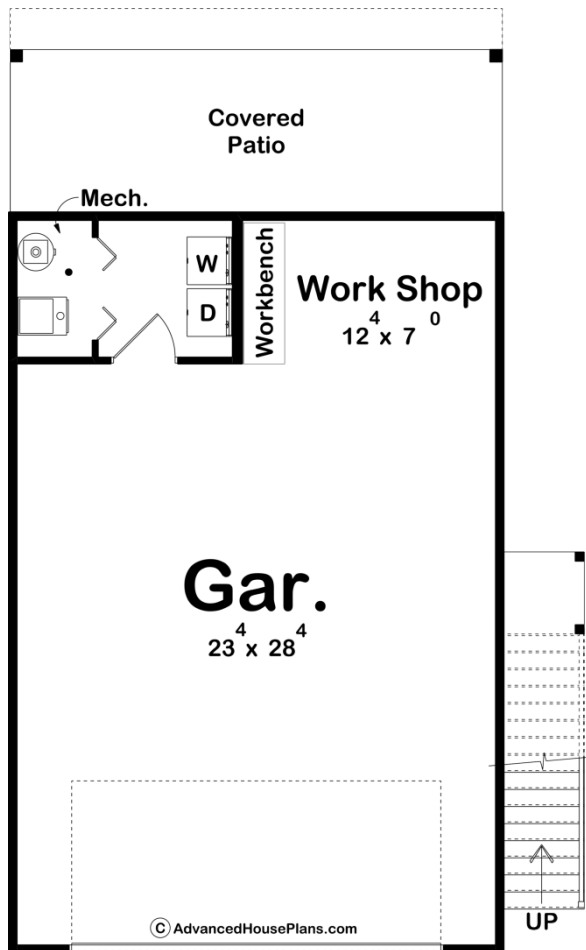
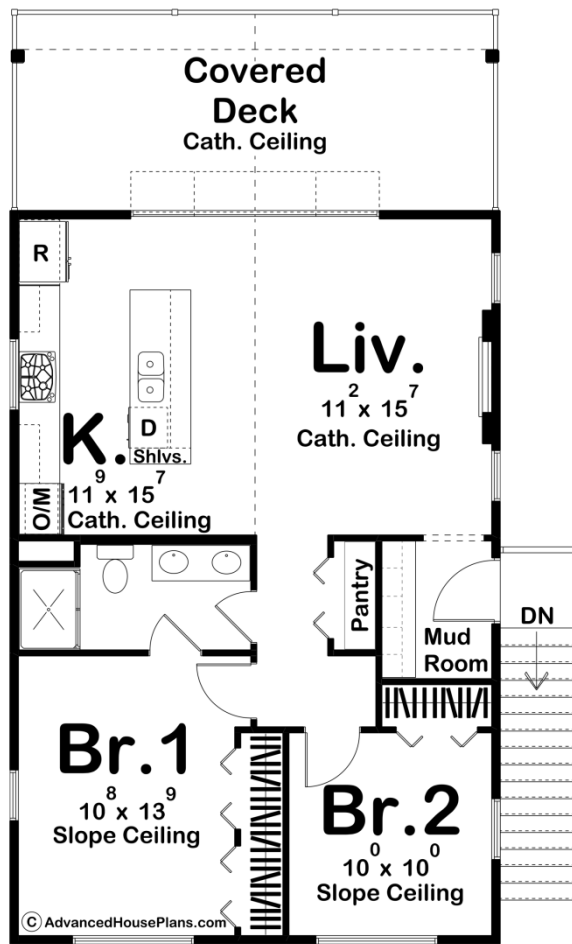




30107 - Reed Point Data Sheet

915 SQ FT	2 BEDS	1 BATHS	2 BAYS	28' 0" WIDE	46' 0" DEEP
--------------	-----------	------------	-----------	----------------	----------------





Construction Specs

Layout

Bedrooms	2
Bathrooms	1
Garage Bays	2

Square Footage

Main Level	52 Sq. Ft.
Second Level	863 Sq. Ft.
Garage	781 Sq. Ft.
Total Finished Area	915 Sq. Ft.

Exterior Dimensions

Width	28' 0"
Depth	46' 0"

Default Construction Stats

Stats are unique to the individual plan.

Foundation Type	Slab
-----------------	------

Exterior Wall Construction	2x4
Roof Pitches	6/12 Primary
Main Wall Height	9'
Second Wall Height	8'

Plan Description

If you are looking for an apartment garage that will give you a unique blend of textures, look no further than the Reed Point plan. A mixture of stone, siding, and wood gives this garage a modern rustic feel. On the main level, you find a 2 car garage that includes a workshop with a built-in workbench. Upstairs you'll find a wonderfully efficient 2 bedroom apartment. The apartments open floor plan makes great use of the space. The kitchen includes a large island with a snack bar. Both bedrooms share a bathroom with a double vanity.