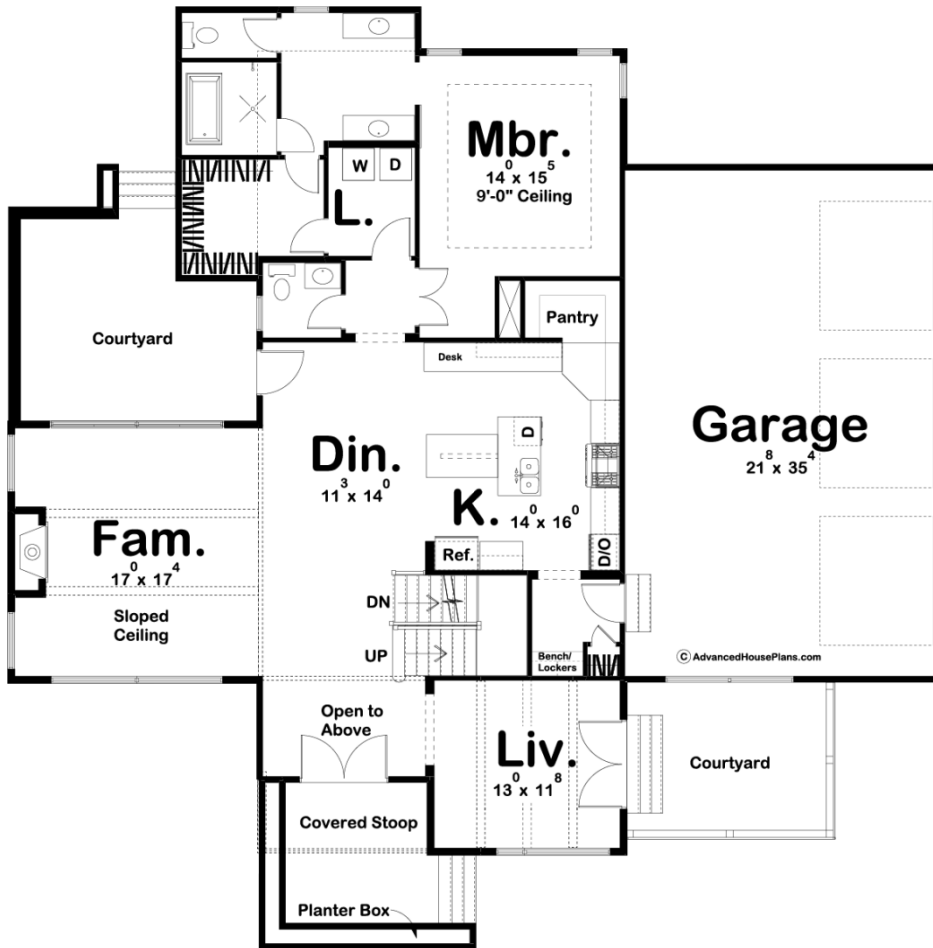
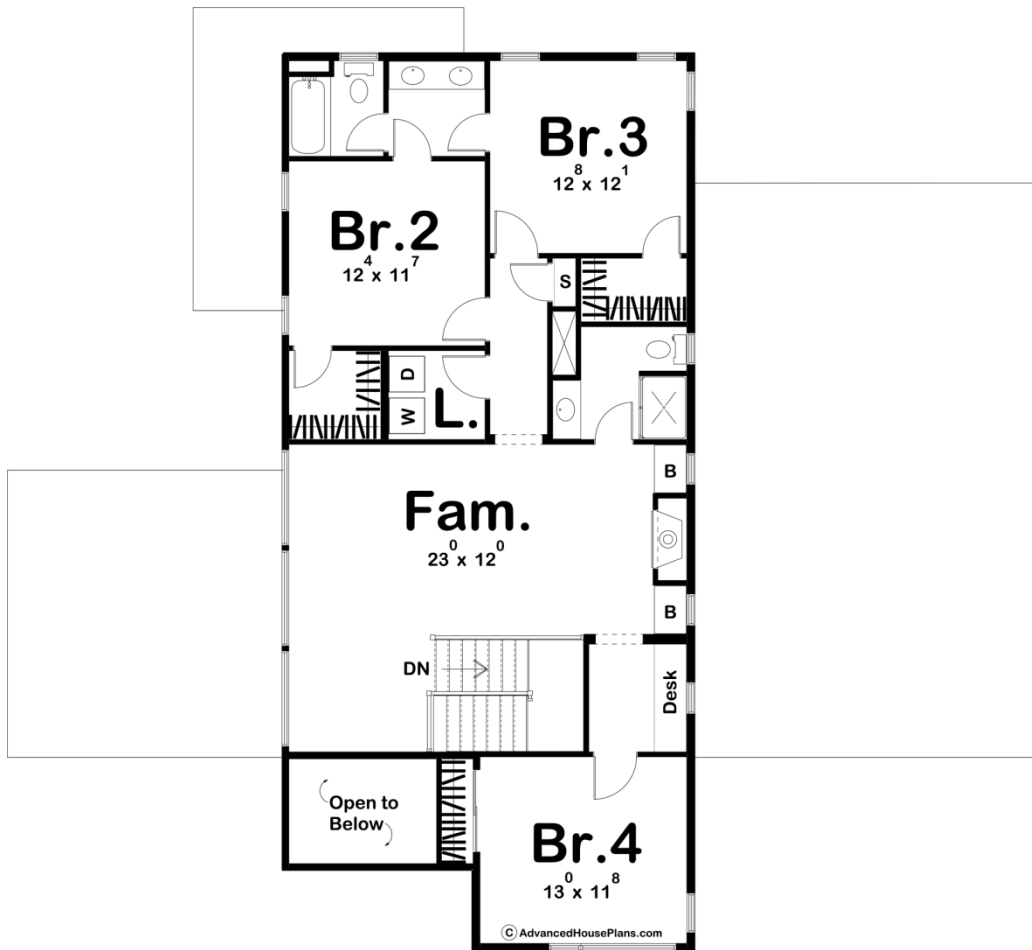




29648 - Regency Data Sheet

| | | | | | |
|---------------|-----------|------------|-----------|----------------|----------------|
| 3067 SQ FT | 4 BEDS | 4 BATHS | 3 BAYS | 65' 0" WIDE | 65' 8" DEEP |
|---------------|-----------|------------|-----------|----------------|----------------|





Construction Specs

Layout

| | |
|-------------|---|
| Bedrooms | 4 |
| Bathrooms | 4 |
| Garage Bays | 3 |

Square Footage

| | |
|---------------------|--------------|
| Main Level | 1831 Sq. Ft. |
| Second Level | 1236 Sq. Ft. |
| Garage | 792 Sq. Ft. |
| Total Finished Area | 3067 Sq. Ft. |

Exterior Dimensions

| | |
|-------|--------|
| Width | 65' 0" |
| Depth | 65' 8" |

Default Construction Stats

Stats are unique to the individual plan.

| | |
|-----------------|----------|
| Foundation Type | Basement |
|-----------------|----------|

| | |
|----------------------------|------------------------------|
| Exterior Wall Construction | 2x4 |
| Roof Pitches | 3/12 Primary, 6/12 Secondary |
| Foundation Wall Height | 9' |
| Main Wall Height | 9' |
| Second Wall Height | 8' |

Plan Description

If you are looking for curb appeal, look no further. The Regency plan's exterior brings together wood, stucco, and stone to give it the ultimate modern look. Once you step into the house, you will be amazed by the open floor plan with its large windows in the great room. The great room is accented by exposed wood beams and fireplace. A courtyard that's great for outdoor entertainment can be accessed from the dining room. The kitchen includes a walk-in pantry and a large island with a breakfast bar. You will find the master suite situated perfectly on the main floor complete with his/her vanities in the bath. Upstairs bedrooms 2 and 3 share a Jack and Jill bathroom while bedroom 4 and the upstairs family room share a centrally located hall bath.