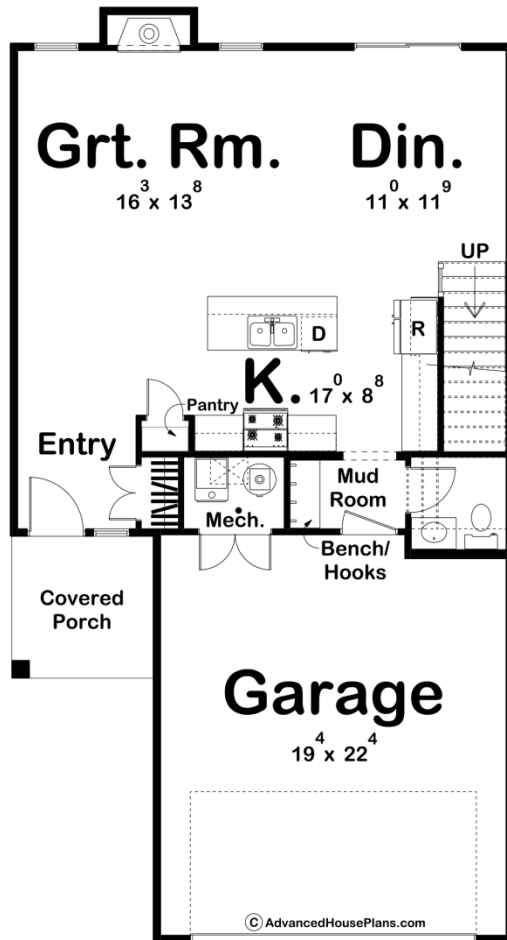
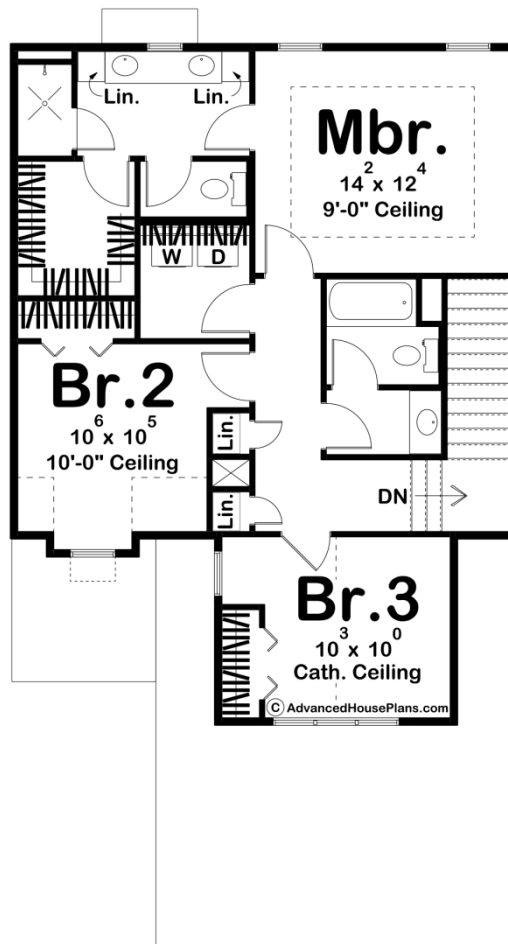




30238 - Ridgehaven Data Sheet

1591 SQ FT	3 BEDS	3 BATHS	2 BAYS	28' 0" WIDE	52' 0" DEEP
---------------	-----------	------------	-----------	----------------	----------------





Construction Specs

Layout

Bedrooms	3
Bathrooms	3
Garage Bays	2

Square Footage

Main Level	749 Sq. Ft.
Second Level	842 Sq. Ft.
Covered Area	64 Sq. Ft.
Garage	445 Sq. Ft.
Total Finished Area	1591 Sq. Ft.

Exterior Dimensions

Width	28' 0"
Depth	52' 0"
Ridge Height	28' 7"
<i>Calculated from main floor line</i>	

Default Construction Stats

Stats are unique to the individual plan.

Foundation Type	Slab
Exterior Wall Construction	2x4
Roof Pitches	Primary 8/12, Secondary 10/12, 4/12, 6/12
Main Wall Height	9'
Second Wall Height	8'

Plan Description

To see this plan in duplex form, head over to our Wilshire plan. The Ridgehaven plan is a beautiful modern farmhouse with 1591 square feet, 3 beds, and 3 baths. The exterior is a mix of vinyl as well as board and batten siding, with dark windows and gorgeous dark accents. The main level is complete with a two-car garage and covered porch, both with access to either an entryway or mudroom. The mudroom is connected to a quaint powder bath, and heads straight into the open concept living area and kitchen. The kitchen has a large island for quick breakfasts, and is open directly to the great and dining rooms. Heading upstairs is where you can find the bedrooms, laundry room, and additional bathrooms. Bedrooms two and three share a hallway bath, while the master has its own private bath, with double vanities, separate shower and toilet areas, and a large walk-in closet. Looking for a duplex version of this home? Check out our Wilshire plan, #30271. Love this floor plan, check out our Whitehurst plan, #30243.