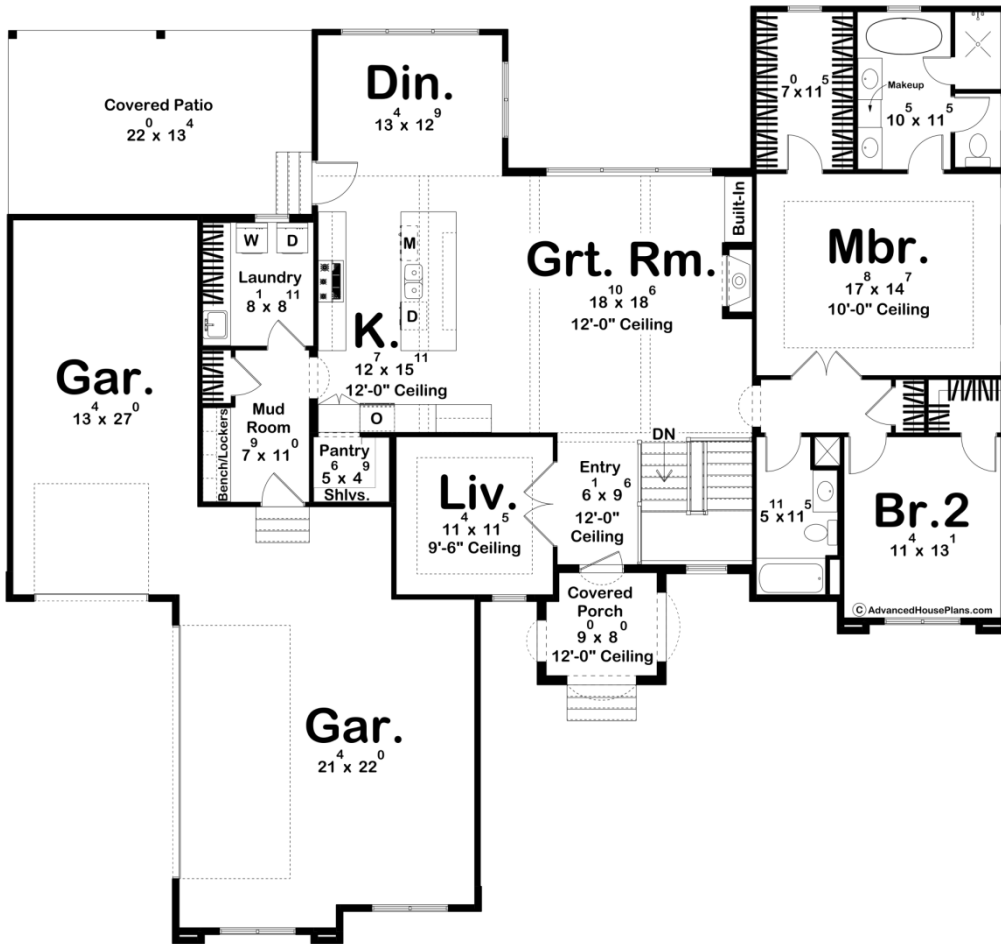
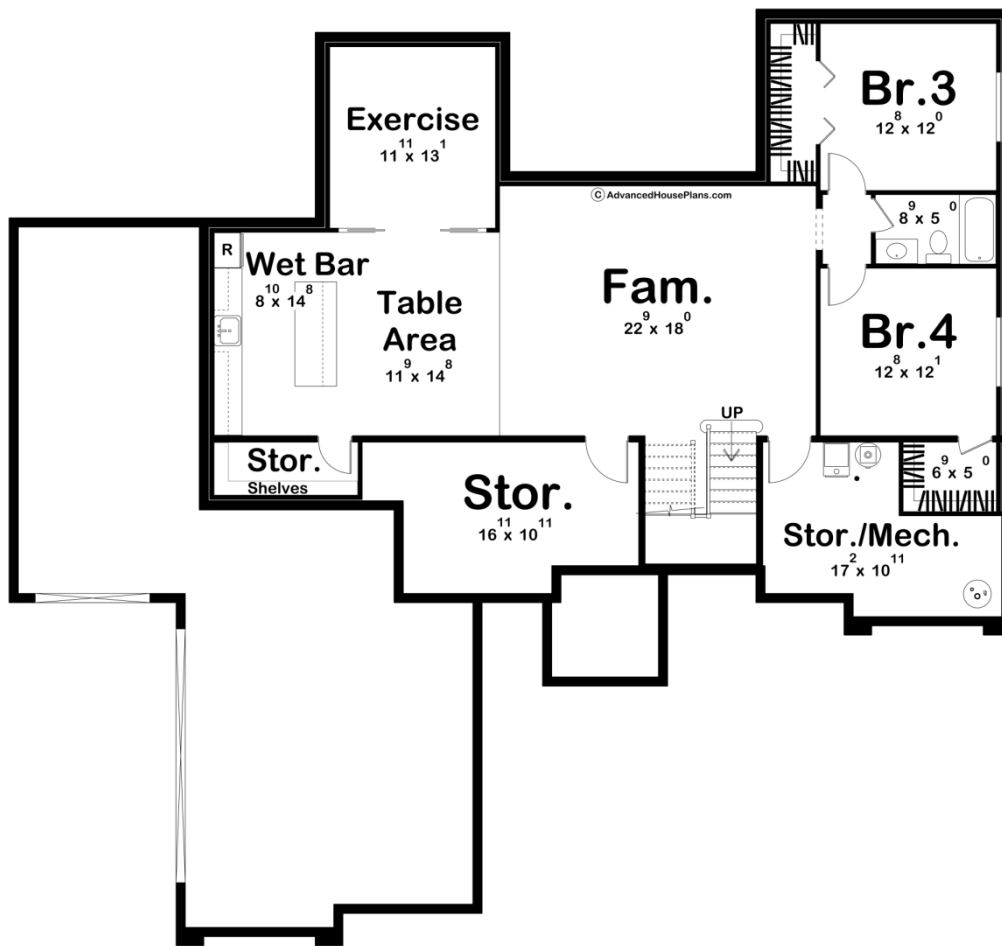




29032 - Rimrock Data Sheet

2029 SQ FT	2 BEDS	2 BATHS	3 BAYS	72' 0" WIDE	67' 4" DEEP
---------------	-----------	------------	-----------	----------------	----------------





Construction Specs

Layout

Bedrooms	2
Bathrooms	2
Garage Bays	3

Square Footage

Main Level	2029 Sq. Ft.
Covered Area	362 Sq. Ft.
Garage	983 Sq. Ft.
Total Finished Area	2029 Sq. Ft.

Exterior Dimensions

Width	72' 0"
Depth	67' 4"
Ridge Height	18' 9"
<i>Calculated from main floor line</i>	

Default Construction Stats

Stats are unique to the individual plan.

Foundation Type	Basement
Exterior Wall Construction	2x4
Roof Pitches	Primary 6/12
Foundation Wall Height	9'
Main Wall Height	9'

Plan Description

This single-story Mediterranean-style house plan features a charming exterior combining stucco and natural stone with warm wood accents for a rustic yet refined look. A small arched front porch with elegant detailing welcomes you into the home. Inside, the entry flows seamlessly into an open floor plan that connects the great room, kitchen, and dining area. High ceilings adorned with exposed wood beams add a sense of spaciousness and rustic charm. An additional cozy living room provides extra space for relaxation or entertainment. The home includes two well-appointed bedrooms, offering comfortable private spaces. The primary bedroom suite offers luxury with ample closet space, while the second bedroom is perfect for guests or family. A three-car garage provides plenty of storage and parking. The home opens up to a rear covered patio, perfect for outdoor living and dining. The finished basement plan offers an additional 1461 sq ft of finished space. This home combines functional, open spaces with Mediterranean elegance and warmth, perfect for both everyday living and entertaining.