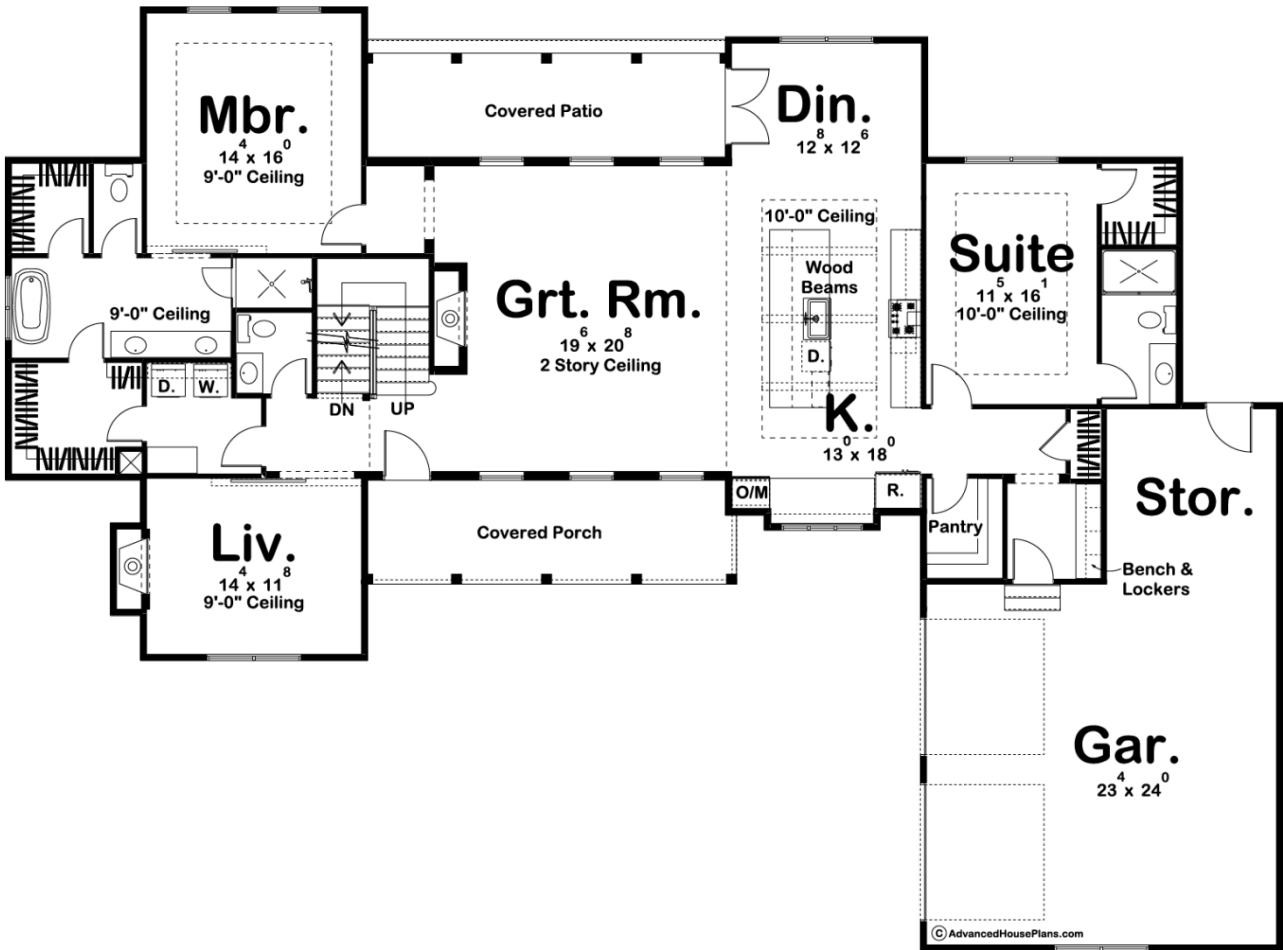
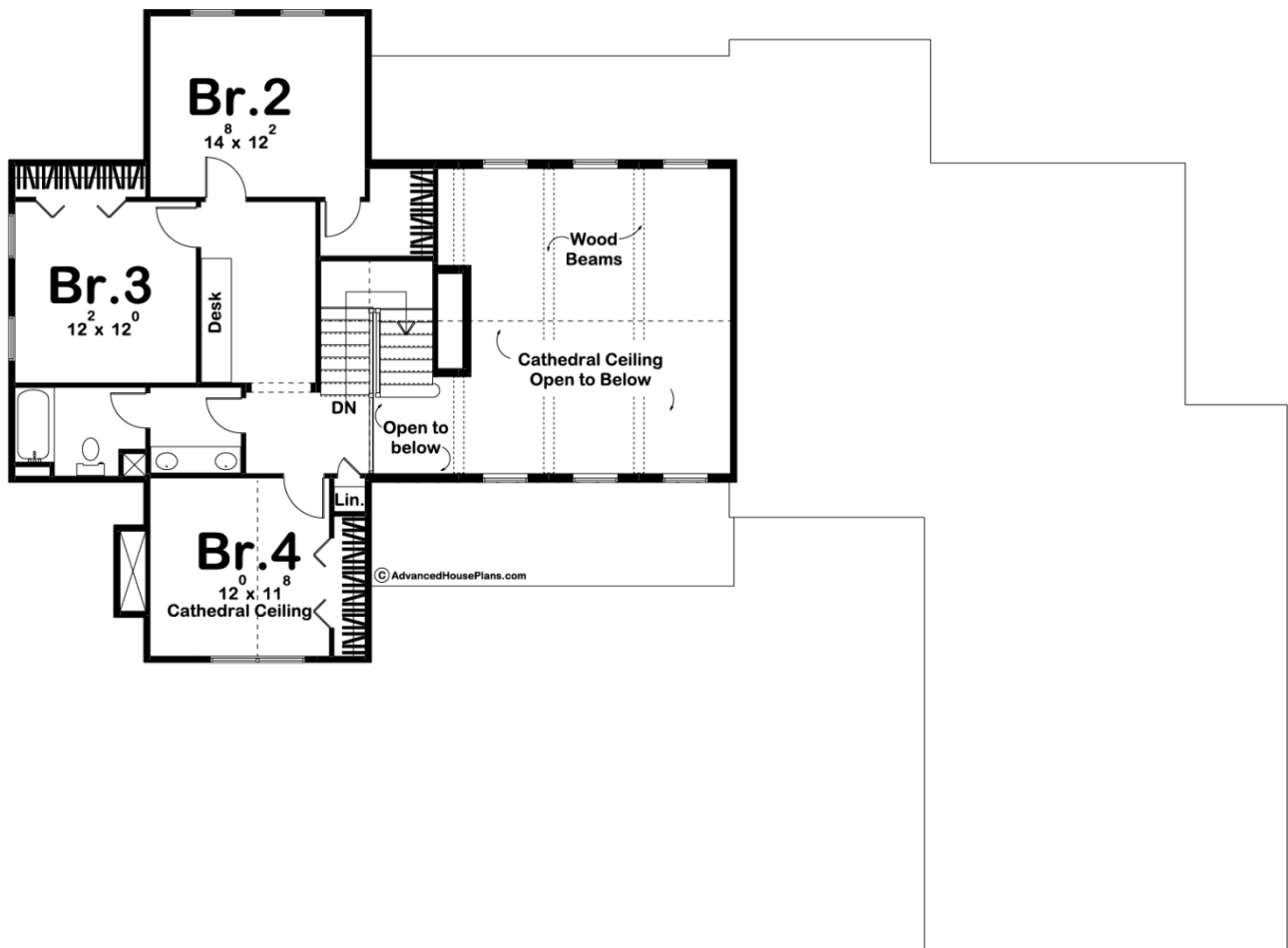




29531 - Rochester Data Sheet

3043 SQ FT	5 BEDS	4 BATHS	2 BAYS	85' 0" WIDE	63' 0" DEEP
---------------	-----------	------------	-----------	----------------	----------------





Construction Specs

Layout		
Bedrooms		5
Bathrooms		4
Garage Bays		2
Square Footage		
Main Level		2201 Sq. Ft.
Second Level		842 Sq. Ft.
Garage		725 Sq. Ft.
Total Finished Area		3043 Sq. Ft.
Exterior Dimensions		
Width		85' 0"
Depth		63' 0"
Ridge Height		28' 0"
<i>Calculated from main floor line</i>		

Default Construction Stats
Stats are unique to the individual plan.

Foundation Type	Basement
Exterior Wall Construction	2x4
Roof Pitches	12/12 primary 10/12 & 3/12 secondary
Foundation Wall Height	9'
Main Wall Height	9'
Second Wall Height	8'

Plan Description

This L-shaped, 1.5-story, Modern Farmhouse plan is highlighted on the exterior by dual fireplaces, metal roofs, front and back porches and board and batten siding. Inside, immediate impressions are made by a soaring 2-story-high, wood-beamed cathedral ceiling in the great room. A trio of tall windows tucked beneath shed roofs complement both the front and rear walls of the great room, offering views through the front porch and rear patio. The kitchen, with expansive work island, lies beneath its own beamed ceiling and is open to the dining area. Away from the living areas, the main floor's master suite features his and her walk-in closets, and his and her vanities in the bath. The master suite can be entered either through an alcove off the great room or through a more circuitous route from the laundry area. The second suite on the main floor lies behind the kitchen, featuring a walk-in closet and its own private 3/4 bath. Upstairs, bedroom 2, 3 and 4 share a hall bath. Bedroom 4 receives an added sense of space from a tall cathedral ceiling. Back on the main level, the generously proportioned 2-car garage includes ample space for a workshop. It accesses the home through a mudroom, complete with bench, lockers and a coat closet. As always any Advanced House Plans home plan can be customized to fit your needs with our alteration department. Whether you need to add another garage stall, change the front elevation, stretch the home larger or just make the home plan more affordable for your budget we can do that and more for you at Ahp.